

## Tennyson Avenue Motspur Park, KT3 6LZ

£650,000 Freehold

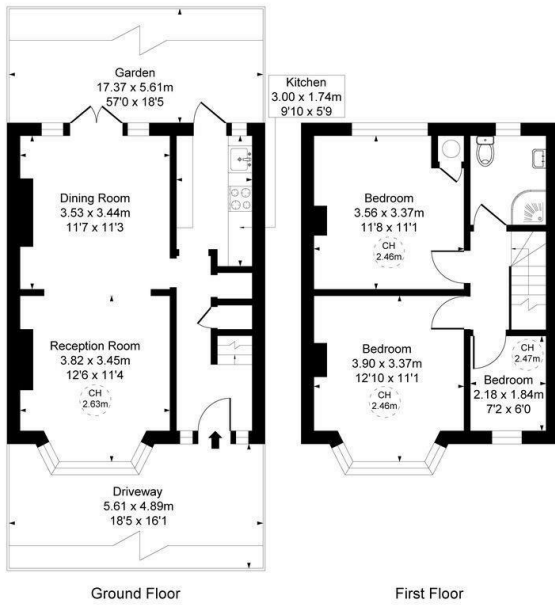


**NO ONWARD CHAIN** - This charming three-bedroom 1930s mid-terrace home is ideally situated within easy reach of Motspur Park Station, local shops and the open green spaces of The Sir Joseph Hood Memorial Playing Fields.

Beautifully presented throughout, the property features off-street parking to the front, a welcoming entrance hall with useful under-stairs storage, a modern, neutrally decorated separate kitchen and a spacious, light-filled 24'ft through lounge/dining room. The lounge benefits from plantation shutters to the front and French doors opening onto a 57'ft rear garden with rear access, patio area and shed to rear. Upstairs, there are three bedrooms, all fitted with plantation shutters, along with a stylish newly fitted shower room.

The property also offers excellent scope to extend into the loft and to the rear, subject to the usual planning consents, making it an ideal home with future potential.

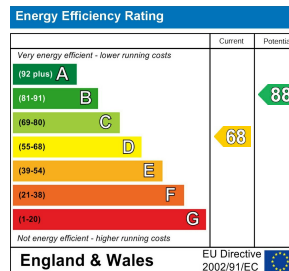
Tennyson Avenue Motspur Park, KT3  
 Approximate Gross Internal Area  
 75.77 sq m / 816 sq ft  
 (CH = Ceiling Heights)



This plan is not to scale. It is for guidance and not for valuation purposes.  
 All measurements and areas are approximate only, and have been prepared in accordance with the current edition of the RICS Code of Measuring Practice.



- Charming three-bedroom 1930s mid-terrace home
- Ideally located close to Motspur Park Station and shops
- Off street parking to front
- Spacious 24ft through lounge/dining room
- Newly fitted shower room
- Beautifully presented throughout
- Potential to extend s.t.p.p
- No Onward Chain
- EPC Rating - D
- Council Tax Band - D



For Free Mortgage Quote and Best Mortgage Rates, call Ellisons Mortgage Advisor on 0208 944 9595



Although these particulars are believed to be correct, their accuracy is not guaranteed and they do not form part of any contract.

Celebrating 30 years of successful Sales and Lettings in Merton

