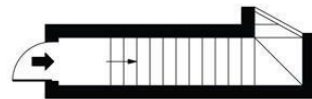
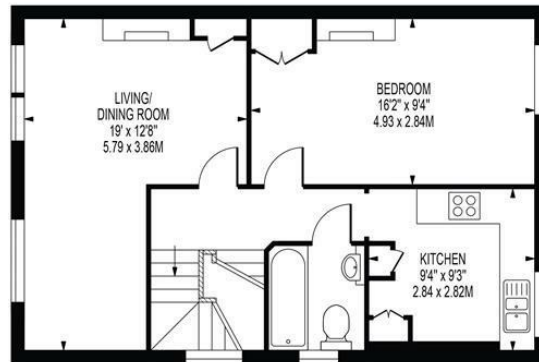
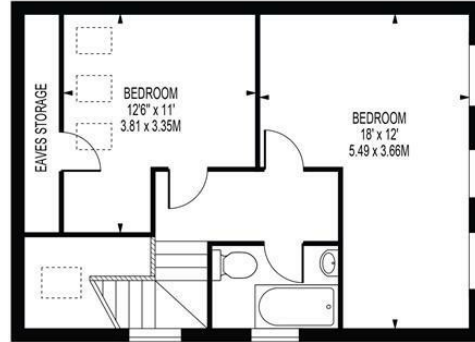
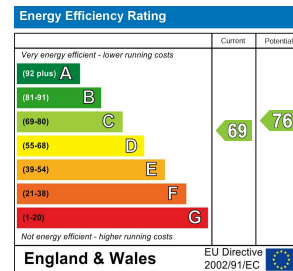
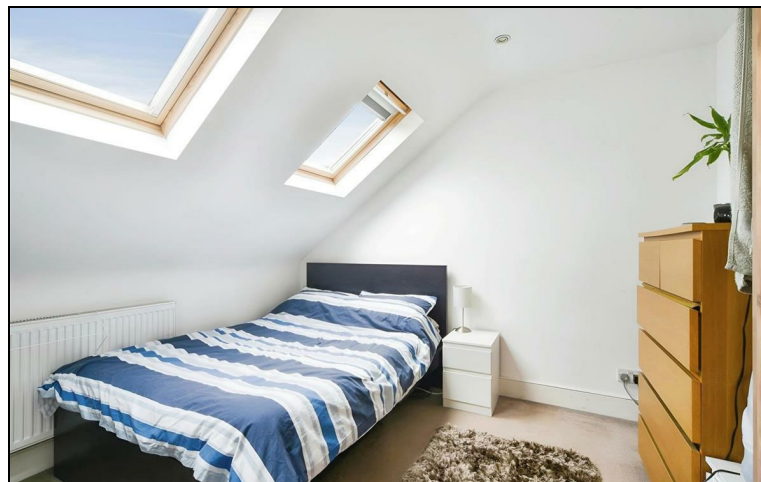


STANTON ROAD
APPROXIMATE TOTAL INTERNAL FLOOR AREA: 1052 SQ FT - 97.73 SQ M
(INCLUDING EAVES STORAGE)
APPROXIMATE GROSS INTERNAL AREA OF EAVES STORAGE: 25 SQ FT - 2.32 SQ M



FOR ILLUSTRATION PURPOSES ONLY

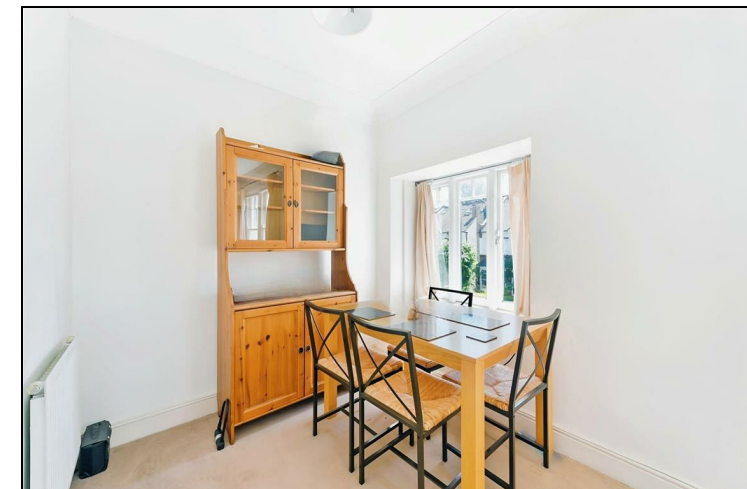
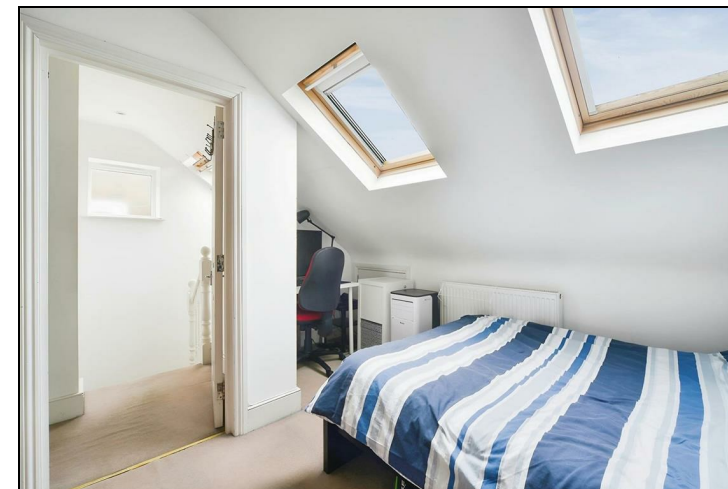
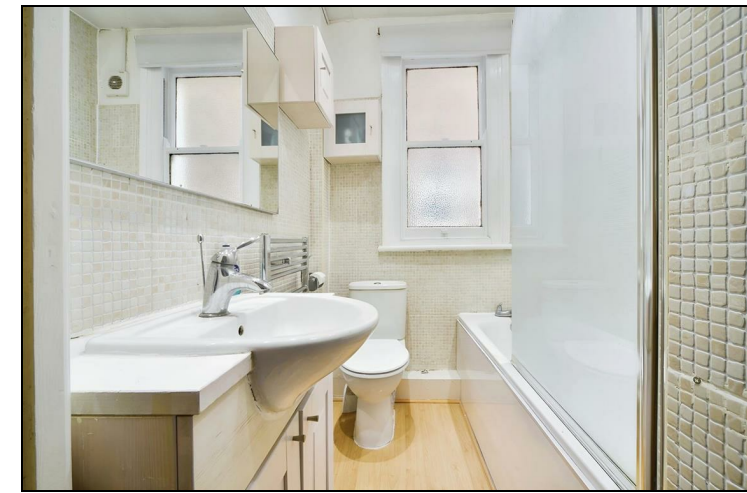
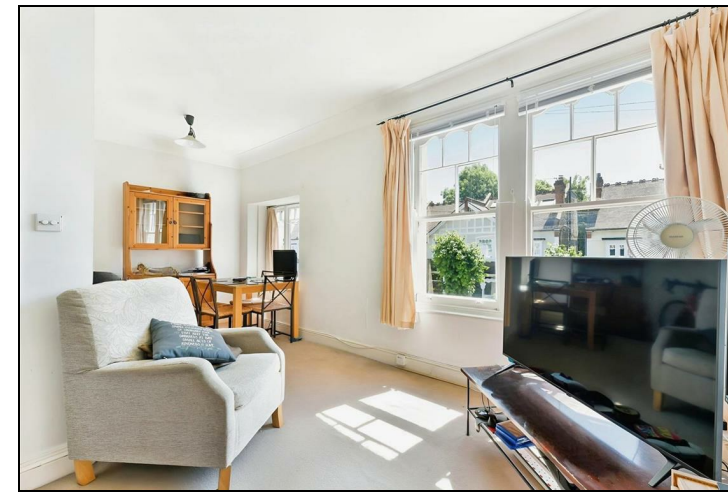
THIS FLOOR PLAN SHOULD BE USED AS A GENERAL OUTLINE FOR GUIDANCE ONLY AND DOES NOT CONSTITUTE IN WHOLE OR IN PART AN OFFER OR CONTRACT. ANY INTENDING PURCHASER OR LESSEE SHOULD SATISFY THEMSELVES BY INSPECTION, SEARCHES, ENQUIRIES AND FULL SURVEY AS TO THE CORRECTNESS OF EACH STATEMENT. ANY AREAS, MEASUREMENTS OR DISTANCES QUOTED ARE APPROXIMATE AND SHOULD NOT BE USED TO VALUE A PROPERTY OR BE THE BASIS OF ANY SALE OR LET.



£2,600 Per Month:

THREE DOUBLE BEDROOM, TWO BATHROOM
SPLIT LEVEL CONVERSION FLAT

This attractive 1052 sq.ft, three double bedroom, two bathroom, split level conversion flat is located on a desirable tree lined road only 0.2 Miles from Raynes Park High Street and Station. This great sized apartment is an ideal for three professional sharers or a family.
EPC band C. Council tax band C.



SPECIFICATION:

- Three Double Bedroom
- Split Level Conversion
- Close to Raynes Park Station & Amenities
- Two bathrooms
- Unfurnished
- First Months Rent in Advance
- Five Weeks Security Deposit
- Holding Deposit = One Weeks Rent
- EPC - C
- Council Tax Band - C

