

## Mill Green Road Mitcham, CR4 4FQ

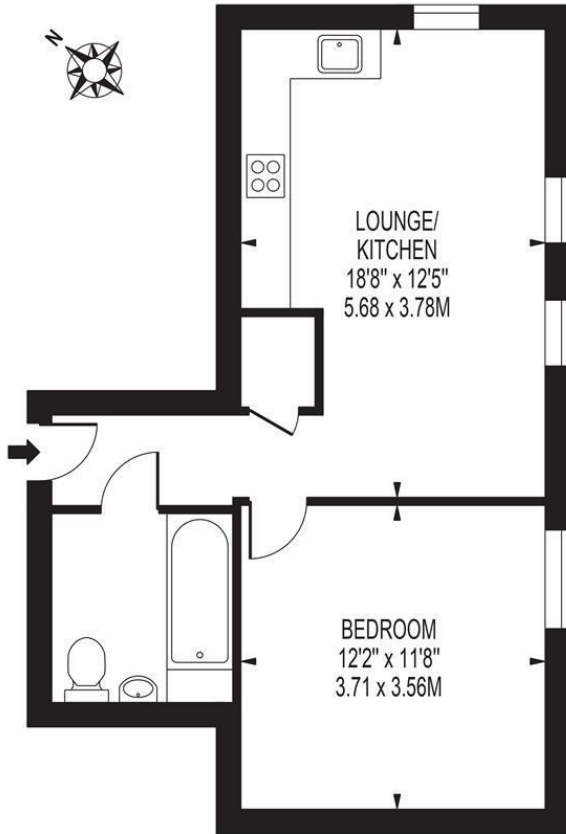
£1,600 Per Month



**\*\*AVAILABLE 14th AUGUST 2026\*\*** A stunning modern one bedroom apartment located within this sought after development. This bright and spacious property offers a large open reception room, fully fitted kitchen, modern bathroom and large double bedroom. Benefits include residents parking (subject to additional charges) and ample storage. Green Side Views is located close to Mitcham Junction Mainline Station and Tram Stop within 0.5 miles away providing direct access into London. Hackbridge Mainline Station is also 0.7 miles away. There are a wide range of shops and amenities and river walks located within easy reach. Unfurnished.

## GREENSIDE VIEWS

APPROXIMATE GROSS INTERNAL FLOOR AREA: 465 SQ FT - 43.20 SQ M



GROUND FLOOR  
FOR ILLUSTRATION PURPOSES ONLY

THIS FLOOR PLAN SHOULD BE USED AS A GENERAL OUTLINE FOR GUIDANCE ONLY AND DOES NOT CONSTITUTE IN WHOLE OR IN PART AN OFFER OR CONTRACT. ANY INTENDING PURCHASER OR LESSEE SHOULD SATISFY THEMSELVES BY INSPECTION, SEARCHES, ENQUIRIES AND FULL SURVEY AS TO THE CORRECTNESS OF EACH STATEMENT. ANY AREAS, MEASUREMENTS OR DISTANCES QUOTED ARE APPROXIMATE AND SHOULD NOT BE USED TO VALUE A PROPERTY OR BE THE BASIS OF ANY SALE OR LET.



- Modern One Bedroom Apartment
- Beautifully Presented
- Permit Parking
- Close To Transport
- Unfurnished
- First months rent in advance
- Damages deposit = five weeks deposit
- Fee of Intent = one weeks rent
- EPC Rating : C
- Sutton Council Tax Band : B

Energy Efficiency Rating		Current	Potential
<i>Very energy efficient - lower running costs</i>			
(92 plus)	A		
(81-91)	B		
(69-80)	C	78	78
(55-68)	D		
(39-54)	E		
(21-38)	F		
(1-20)	G		
<i>Not energy efficient - higher running costs</i>			
<b>England &amp; Wales</b>		EU Directive 2002/91/EC	

For Free Mortgage Quote and Best Mortgage Rates, call an Ellisons Mortgage Advisor on 020 8544 0518



Although these particulars are believed to be correct, their accuracy is not guaranteed and they do not form part of any contract.

Celebrating 30 years of successful Sales and Lettings in Merton

