



Bigwood Road Hampstead Garden Suburb NW11

Monthly Rental Of £3,750

 **litchfields**

800 Finchley Road, Hampstead Garden Suburb, London, NW11 7TJ

020 8458 5000

sales@litchfields.com

www.litchfields.com

Offices also in Highgate



A delightful and extremely spacious four bedroom duplex apartment having an abundance of light arranged on the first and second floors of this character block built in 1923 and designed by Butler and Soutar. Situated a short walk to the Heath Extension, Golders Green underground station, Big Wood and Henrietta Barnet Girls Grammar School. Featuring its own private front door, large reception, a fitted open plan kitchen/dining room and a utility room. The master bedroom has an en suite shower room and there are three further double bedrooms and a luxury Travertine bathroom, beautiful communal gardens. Unfurnished.



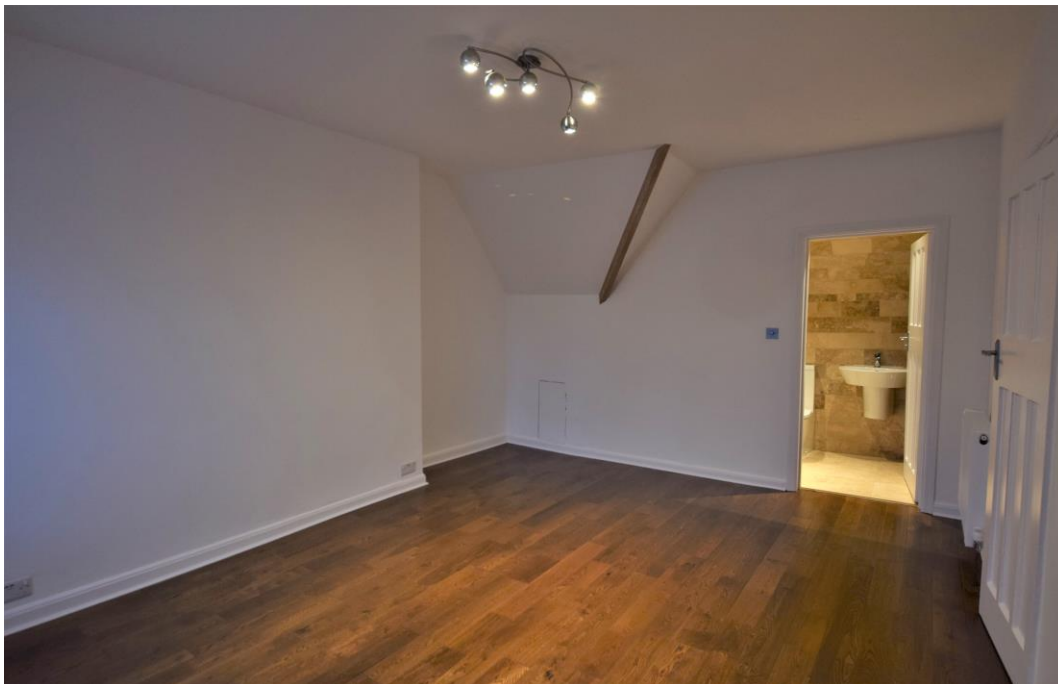
4

2

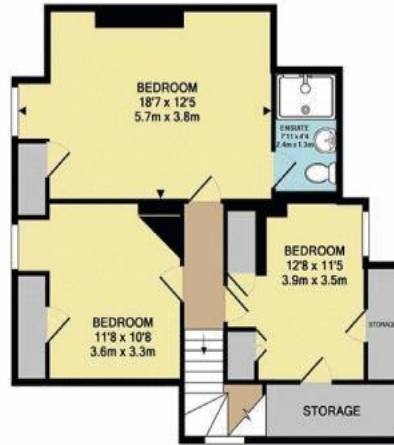
1



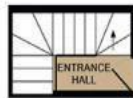
- Four bedrooms
- Reception room
- Kitchen/diner
- Luxury Bathroom
- Master bedroom with en suite shower room
- Utility room
- Communal gardens
- Grade II listed
- Close to Heath Extension and Golders Green Station
- Unfurnished



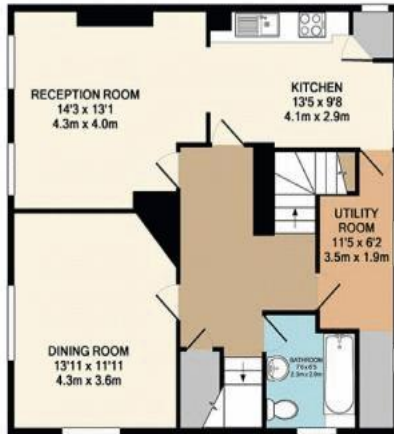




2ND FLOOR



GROUND FLOOR



1ST FLOOR



BIGWOOD COURT NW11
 TOTAL APPROX. FLOOR AREA 1333 SQ.FT. (123.8 SQ.M.)

Whilst every attempt has been made to ensure the accuracy of the floor plan contained here, measurements of doors, windows, rooms and any other items are approximate and no responsibility is taken for any error, omission, or mis-statement. The plan is for illustrative purposes only and should be used as such by any prospective purchaser. The services, systems and appliances shown have not been tested and no guarantee as to their operability or efficiency can be given.
 Made with Metropix 02018