

Symonds  
& Sampson



# Floral Farm

Wimborne, Dorset

# 24

Floral Farm  
Wimborne  
BH21 3AU



- A stunning family home set in a highly desirable location
- Five bedrooms, three bathrooms, three reception rooms
- Large gardens to the front and rear, including a wooded area
  - A large driveway and a double garage
- Offered with no forward chain and vacant possession
  - Balcony, utility, in need of some updating
  - Excellent school catchment location

Guide Price **£835,000**

Freehold

Wimborne Sales  
01202 843190  
[wimborne@symondsandsampson.co.uk](mailto:wimborne@symondsandsampson.co.uk)



## THE PROPERTY

A large family home set within an established and desirable development. Elevated position with generously sized rooms and a tremendous garden, offering plenty of space. The property is located within the area's most sought-after school catchment area. This impressive four-bedroom, three-bathroom, three-reception room home is offered with no chain and vacant possession.

## ACCOMMODATION

This exclusive home is set above the road and has four bedrooms, three reception rooms and lovely enclosed gardens with a wonderful, wooded area ideal for wildlife. The home is set in Canford Magna, a location recognised as highly desirable with access to some of the area's finest schools plus delightful riverside walks over the water meadows adjoining the Stour.

## OUTSIDE

The home has deceptively large grounds of nearly half an acre. Set on a raised position with ample parking to the front, coupled with front lawns and hedge borders offering a good degree of privacy. The rear garden is level and there is a large, walled, South facing patio / courtyard garden ideal for al fresco dining, entertaining and relaxing. The remaining garden is laid to lawn bordered by shrubs with a wooded area ideal for children to explore.

## SITUATION

Set within a wonderful development of family homes on the edge of Wimborne's historic market Town and within the area of Canford Magna. This home sits proudly on an elevated position with easy access to local amenities, country walks and the local towns.

## DIRECTIONS

What three words ///boss.ally.crockery

## SERVICES

All mains services  
Mobile and broadband services can be found on Ofcoms website

## MATERIAL INFORMATION

EPC Rating - D  
Dorest local Authority, Council tax band - G

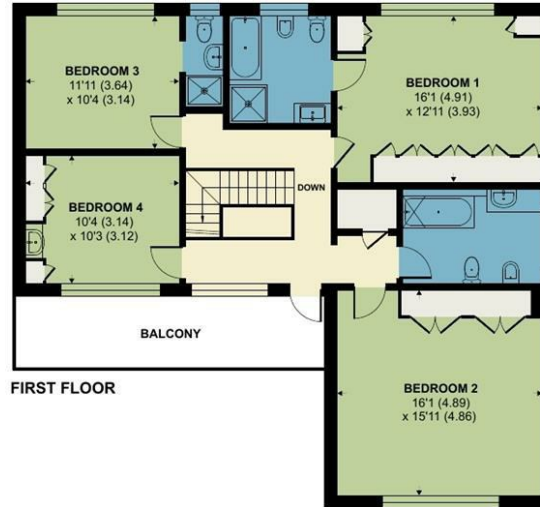




# Floral Farm, Wimborne

Approximate Area = 2264 sq ft / 210.3 sq m  
 Garage = 256 sq ft / 23.7 sq m  
 Total = 2520 sq ft / 234 sq m  
 For identification only - Not to scale

Energy Efficiency Rating		Current	Potential
Vary energy efficient - lower running costs			
(92 plus) A			
(81-91) B			
(69-80) C			
(55-68) D			
(39-54) E			
(21-38) F		61	68
(1-20) G			
Not energy efficient - higher running costs			
England & Wales		EU Directive 2002/91/EC	



Floor plan produced in accordance with RICS Property Measurement 2nd Edition, Incorporating International Property Measurement Standards (IPMS2 Residential). © nichecom 2026. Produced for Symonds & Sampson. REF: 1467796



WIM/NW/JUN26



01202 843190

wimborne@symondsandsampson.co.uk  
 Symonds & Sampson LLP  
 5, West Street,  
 Wimborne, Dorset BH21 1JN



**Important Notice:** Symonds & Sampson LLP and their clients give notice that they have no authority to make or give any representations or warranties regarding the property. These particulars do not form part of any offer or contract and must not be relied upon as statements of fact. Some descriptions and images may have been AI-assisted; while reviewed for accuracy, interested parties should verify key details through inspection or by contacting our agents. All measurements and distances are approximate. Text, photographs, and plans are for guidance only and may not be comprehensive. It should not be assumed that the property has all necessary planning or regulatory consents, and no services, equipment, or facilities have been tested. No investigations have been made into pollution or contamination; purchasers must make their own enquiries. The property is sold subject to all existing wayleaves, easements, and rights of way (public or private), whether mentioned or not. Vendors are not required to define such rights.