



Cranbrook Road, London, W4 2LJ

Guide Price £1,400,000

WHITMAN & CO.

SALES · LETTINGS · COMMERCIAL

- Four bedroom house
- Sought after residential
- Fantastic transport links
- West facing garden
- Benefitting from rear access
- Extensive built in storage

Tenure - Freehold
Local Authority - Hounslow
Council Tax - Band F

THE PROPERTY

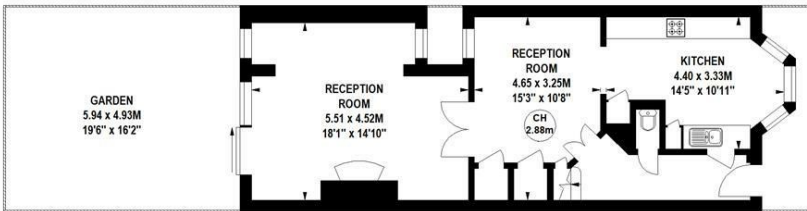
A well presented four bedroom mid-terrace Victorian house offering an excellent balance of living and entertaining space with the added benefit of a secluded west facing garden and rear access. The accommodation comprises a master bedroom with dressing room and luxury ensuite bathroom, three further bedrooms, wet room and family bathroom, fully integrated kitchen, dining room, 18' reception room with French windows onto landscaped west facing garden, cloakroom and the added benefit of extensive built in storage. Ideally situated on this sought after tree lined residential road offering close proximity to all amenities.

Cranbrook Road, W4

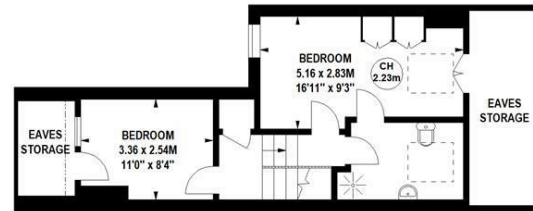
Approximate gross internal area
158.21 sq m / 1703 sq ft
(INCLUDING EAVES STORAGE)
EAVES STORAGE
12.36 sq m / 133 sq ft



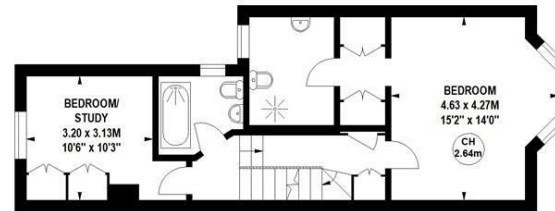
Key :
CH - Ceiling Height



Ground Floor



Second Floor



First Floor

Not to scale, for guidance only and must not be relied upon as a statement of fact.
All measurements and areas are approximate only

SITUATION



5-7 Turnham Green Terrace, Chiswick, London, W4 1RG

Tel 020 8747 8800

E-mail sales@whitmanandco.com

Website www.whitmanandco.com