



Annandale Road, London, W4
Guide Price £599,950

WHITMAN & CO.

SALES · LETTINGS · COMMERCIAL



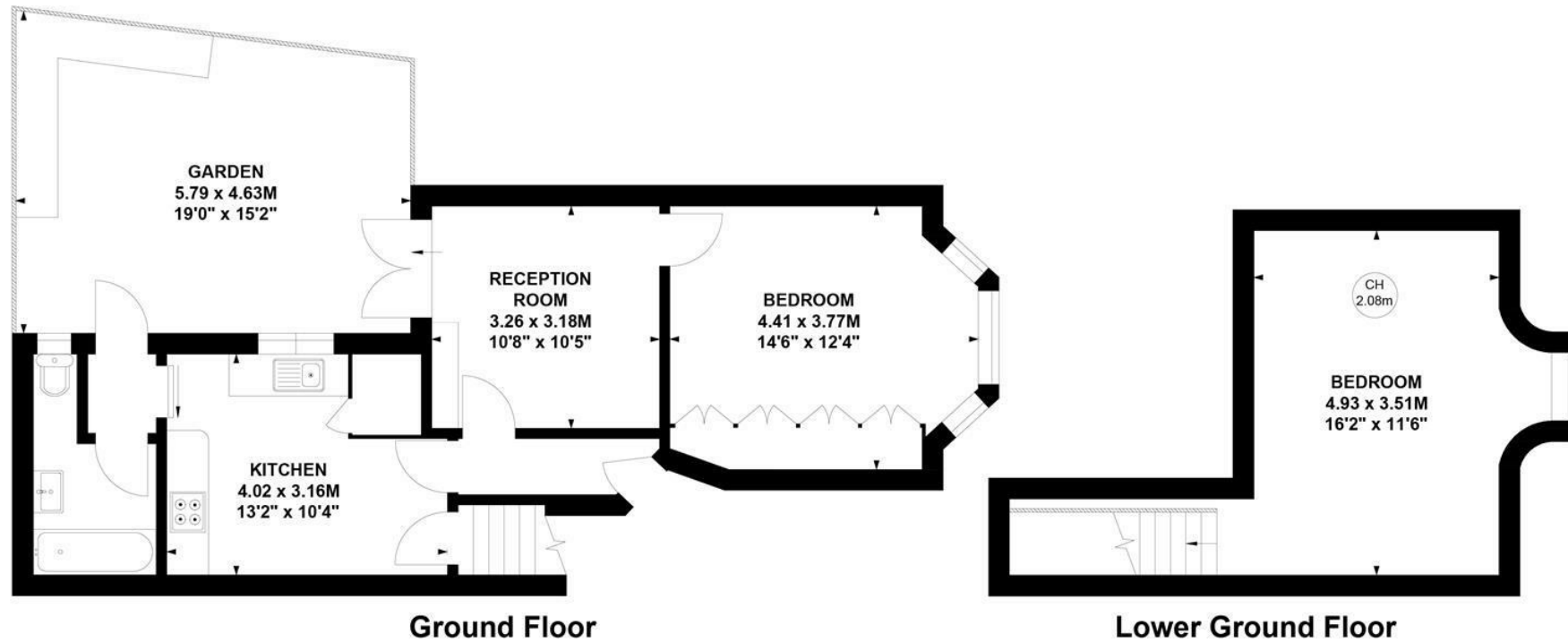
A deceptively spacious period garden flat arranged over 2 floors, offering well-presented accommodation and flexible living space in a super location close to Chiswick High Road and Turnham Green station. The accommodation comprises a spacious double bedroom with a bay window and fitted wardrobes, a bright reception room with French doors leading onto a wonderful secluded south west facing walled garden, a fitted kitchen/breakfast room, a bathroom, and a large second bedroom located on the lower ground floor with additional storage space. Annandale Road runs south off Chiswick High Road and is within a couple of minutes' walk from the shops, cafes and restaurants. Transport links include Turnham Green station (5-minute walk), local bus routes and the A4/M4 for routes in and out of London. No onward chain.



Annandale Road, W4

Approximate gross internal area
71.13 sq m / 765 sq ft

Key :
CH - Ceiling Height



Not to scale, for guidance only and must not be relied upon as a statement of fact.
All measurements and areas are approximate only

- Centrally located period garden flat
- Two double bedrooms
- Moments from Chiswick High Road

- Wonderful secluded south west facing garden
- Kitchen/breakfast room
- No onward chain

Tenure - Leasehold
Lease length - 144 Years remaining
Ground Rent - £100 pa
Service Charge - £2,982 pa
Local authority - Hounslow
Council tax - Band D

