



Witherington Road 12a Witherington Road, London, N5 1PP

£2,300 Per Month

- Close to public transport
- Shops and Amenities Nearby

Witherington Road 12a Witherington Road, London N5 1PP

Positioned on a quiet residential street moments from Highbury Fields, this one bedroom property offers a bright and spacious reception room, separate kitchen, good size double bedroom, family room, additional WC and private garden.

Just 10 minutes walk from the tube and mainline connections of Drayton Park, Holloway Road and Highbury & Islington stations, the location ensures easy transport into the City.

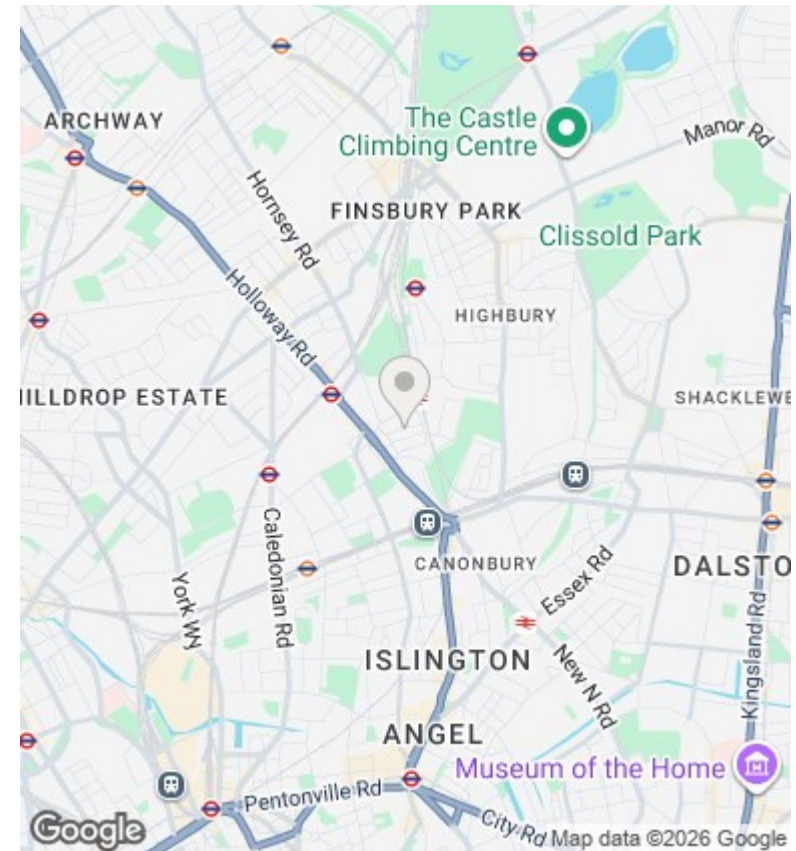
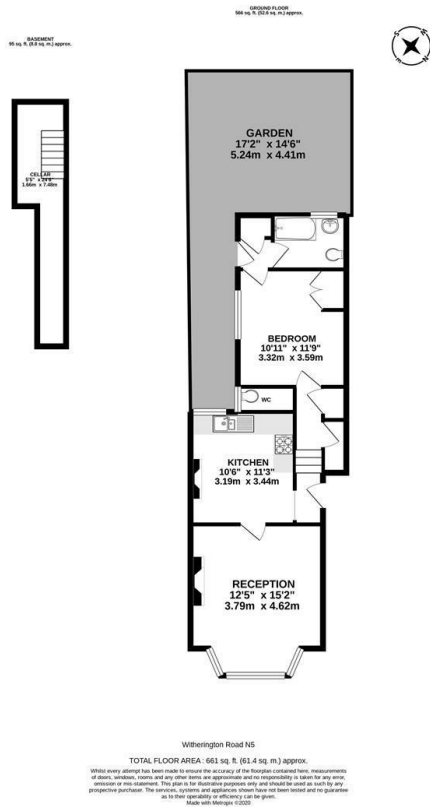
The property is also within short distance to the abundance of fantastic shops, restaurants and cafes of the local area.

Available early August and offered unfurnished.



Council Tax Band: D





Directions

Viewings

Viewings by arrangement only. Call 02073593191 to make an appointment.

Council Tax Band

D

Energy Efficiency Rating		Current	Potential
Very energy efficient - lower running costs			
(92 plus) A			
(81-91) B			
(69-80) C			77
(55-68) D		61	
(39-54) E			
(21-38) F			
(1-20) G			
Not energy efficient - higher running costs			
England & Wales	EU Directive 2002/91/EC		

Full description

Positioned on a quiet residential street moments from Highbury Fields, this one bedroom is just 10 minutes walk from the tube and mainline connections of Drayton Park, Holloway. The property is also within short distance to the abundance of fantastic shops, restaurants and bars.

Available from January 17th 2020.



