

mi-move

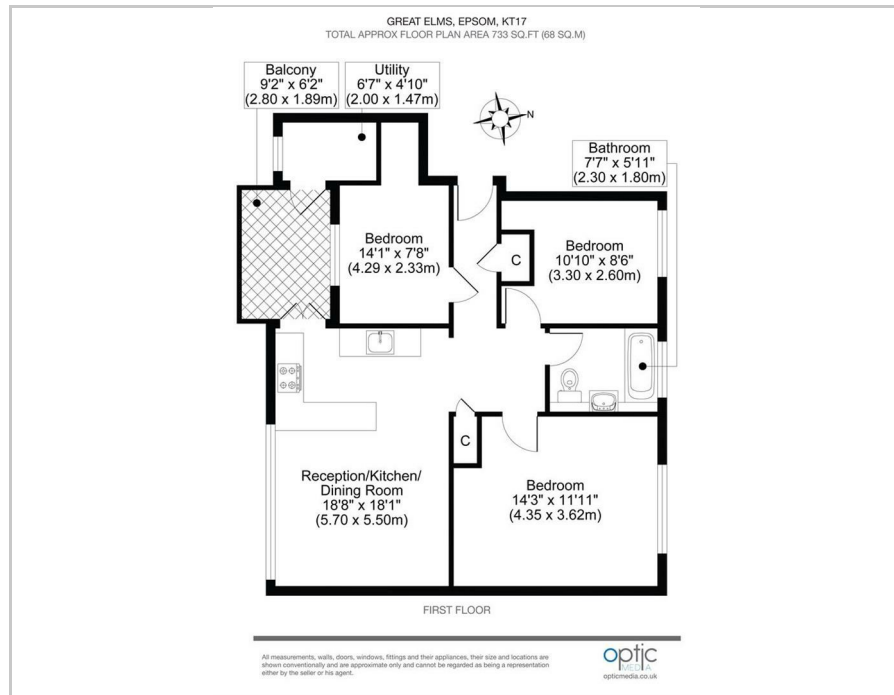
MOVING MADE EASY



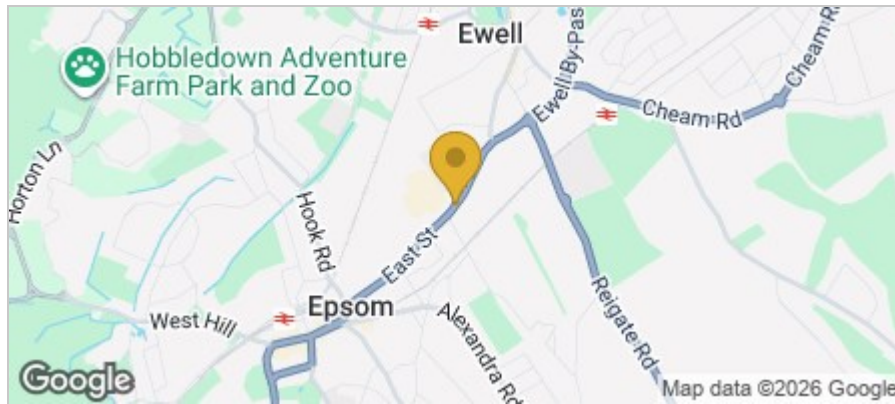
Epsom Road, Epsom
£335,000

3 1 1 C

Floor Plan



Area Map



These particulars, whilst believed to be accurate are set out as a general outline only for guidance and do not constitute any part of an offer or contract. Intending purchasers should not rely on them as statements of representation of fact, but must satisfy themselves by inspection or otherwise as to their accuracy. No person in this firm's employment has the authority to make or give any representation or warranty in respect of the property.

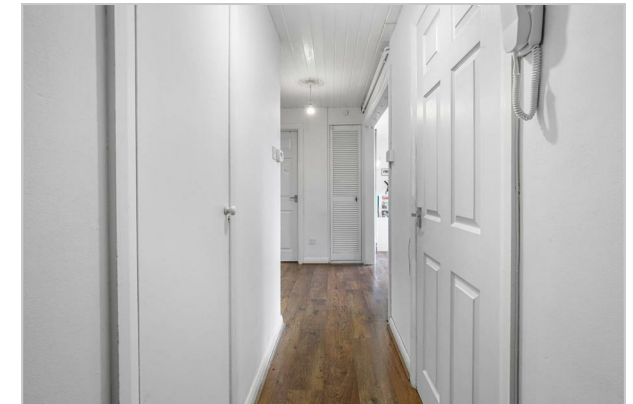
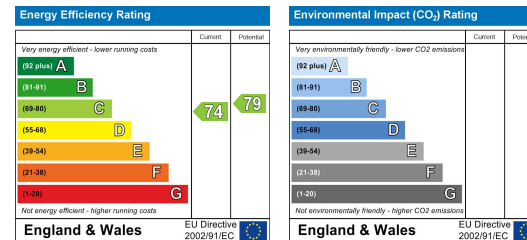
Accommodation

- First floor flat
- Three bedrooms
- Private balcony
- West facing lounge diner
- Modern fitted kitchen
- Modern bathroom
- Double glazed
- Gas central heating
- Close to schools
- Reserved off street parking

Viewing

If you wish to arrange a viewing appointment for this property or require further information please contact our Mi-Move Limited Office on 020 3538 0558.

Energy Efficiency Graph



Mi-Move Limited, 1 Regent Parade, Brighton Road, Sutton SM2 5BQ

Phone: 020 3538 0558 Email: info@mi-move.com Web: www.mi-move.com

Registered in England No: 07979632 VAT No: 132 0989 20

