



GLENTANNER WAY, SW17 0PQ

Asking Price £650,000

We are delighted to introduce this three-bedroom mid-terraced freehold house, offered to the market with no onward chain. The property has been recently updated and redecorated throughout, featuring a smart kitchen and bathroom, along with attractive chevron flooring across the ground floor. There is both a front garden and a generous rear garden with a decked area leading directly from the living room — perfect for outdoor dining or entertaining. The house also offers potential for a rear extension (STP). Upstairs, the first floor has been recently re-carpeted, giving the home a fresh and welcoming feel. Ideally located within easy reach of both Earlsfield Mainline Station and Tooting Broadway (Northern Line), the property also benefits from several nearby parks and green spaces. Freehold. Council Tax Band D. EPC Rating C.

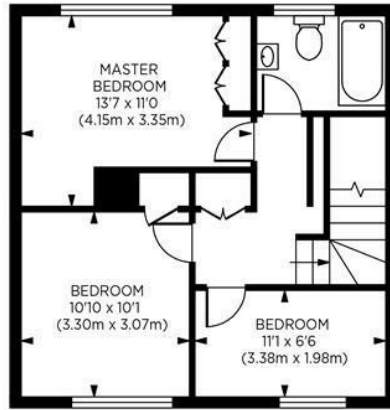
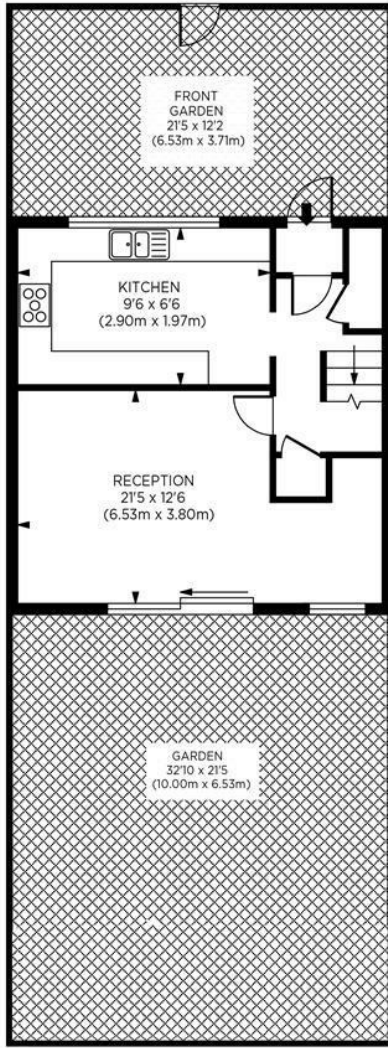


www.maalems.co.uk

Earlsfield & Wandsworth Office
344 Garratt Lane
Earlsfield, London SW18 4EL
T: 020 8875 9200
earlsfield@maalems.co.uk

Registered in England & Wales No. 5585458





GROUND FLOOR

FIRST FLOOR

Glentanner Way, SW17 0PQ
Gross Internal Area 947 sq ft/ 88 sq metres
©photosandfloorplans.com



Energy Efficiency Rating		Current	Potential
Very energy efficient - lower running costs			
(92 plus) A			85
(81-91) B			
(69-80) C		74	
(55-68) D			
(39-54) E			
(21-38) F			
(1-20) G			
Not energy efficient - higher running costs			
England & Wales		EU Directive 2002/91/EC	
Environmental Impact (CO ₂) Rating		Current	Potential
Very environmentally friendly - lower CO ₂ emissions			
(92 plus) A			
(81-91) B			
(69-80) C			
(55-68) D			
(39-54) E			
(21-38) F			
(1-20) G			
Not environmentally friendly - higher CO ₂ emissions			
England & Wales		EU Directive 2002/91/EC	

For an instant or face to face valuation, please scan the QR code:



www.maalems.co.uk
Earlsfield & Wandsworth Office
344 Garratt Lane
Earlsfield, London SW18 4EL
T: 020 8875 9200
earlsfield@maalems.co.uk

Registered in England & Wales No. 5595458

