



HOLDERS HILL DRIVE

Hendon
London NW4



High Specification Home
EPC Rating: C

Price £995,000

Situated on this popular residential street is this extended four bedroom, two bathroom (One Ensuite) semi detached family home.



The current vendors have renovated the property throughout to an extremely high standard embracing modern open plan living across three floors.

Internally the property extends to 1547SQ.FT (143.7 SQM) and comprises a spacious through living dining room with modern feature fireplace and opening up to a large kitchen diner incorporating high specification fitted units and finishes, ground floor WC, storage cupboard and boiler cupboard.

The first floor boasts three bedrooms and a guest bathroom.

The top floor accommodates the principal bedroom with Ensuite shower room and ample eaves storage space.

Externally there is driveway parking to the front with side access leading to shared driveway and the rear garden which is mainly laid to lawn and good size patio area and Further benefits include high ceilings to the ground floor and top of the range finishing throughout .

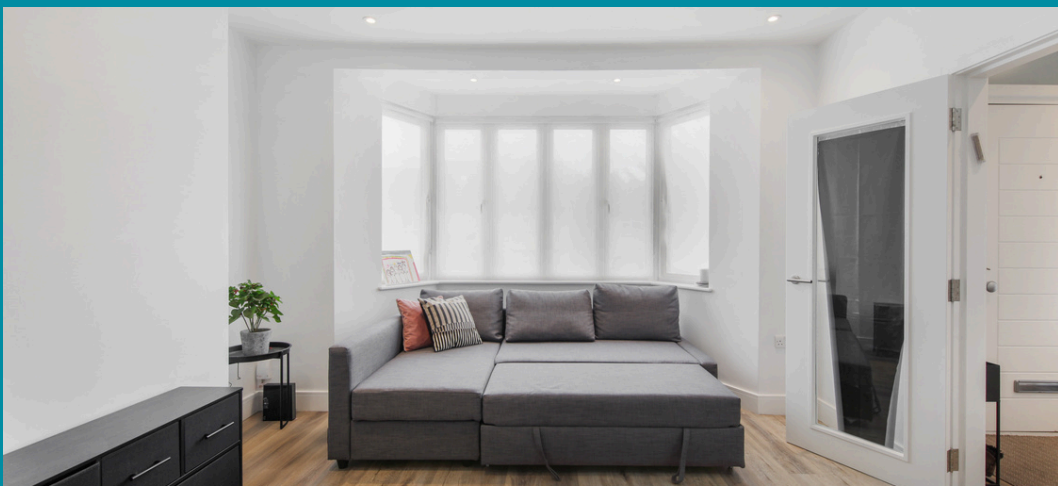
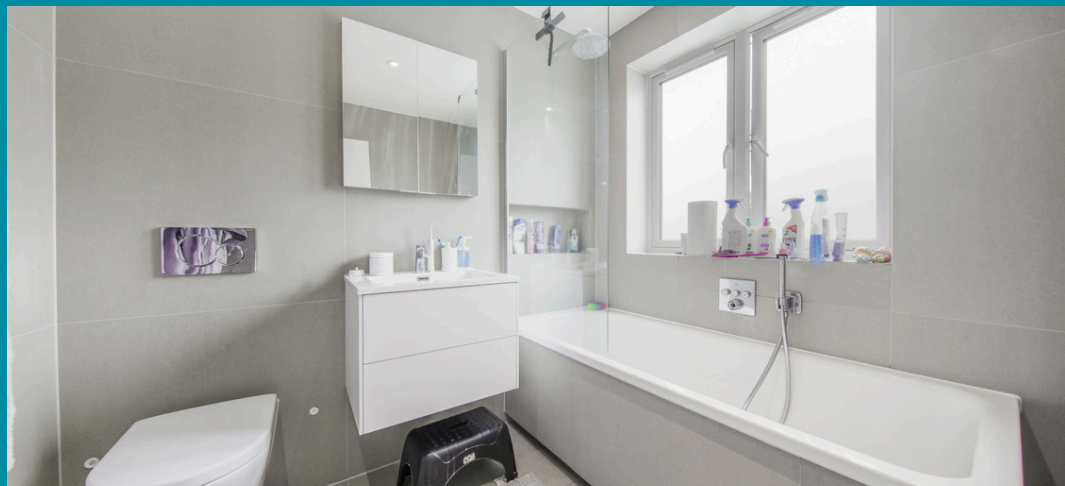
The property is well located for local amenities, good schooling and transport links.



- Four Bedrooms
- Two bathrooms (One Ensuite)
- Spacious Through Living/ Dining Room
- High Specification
- Large Fully Fitted Kitchen/Breakfast Room
- Ground Floor Cloakroom/WC
- Driveway Parking
- Good Size Rear Garden and Patio Area
- Ample Storage Throughout
- Close to Transport Links and Shopping Facilities
- Chain Free
- Sole Agent



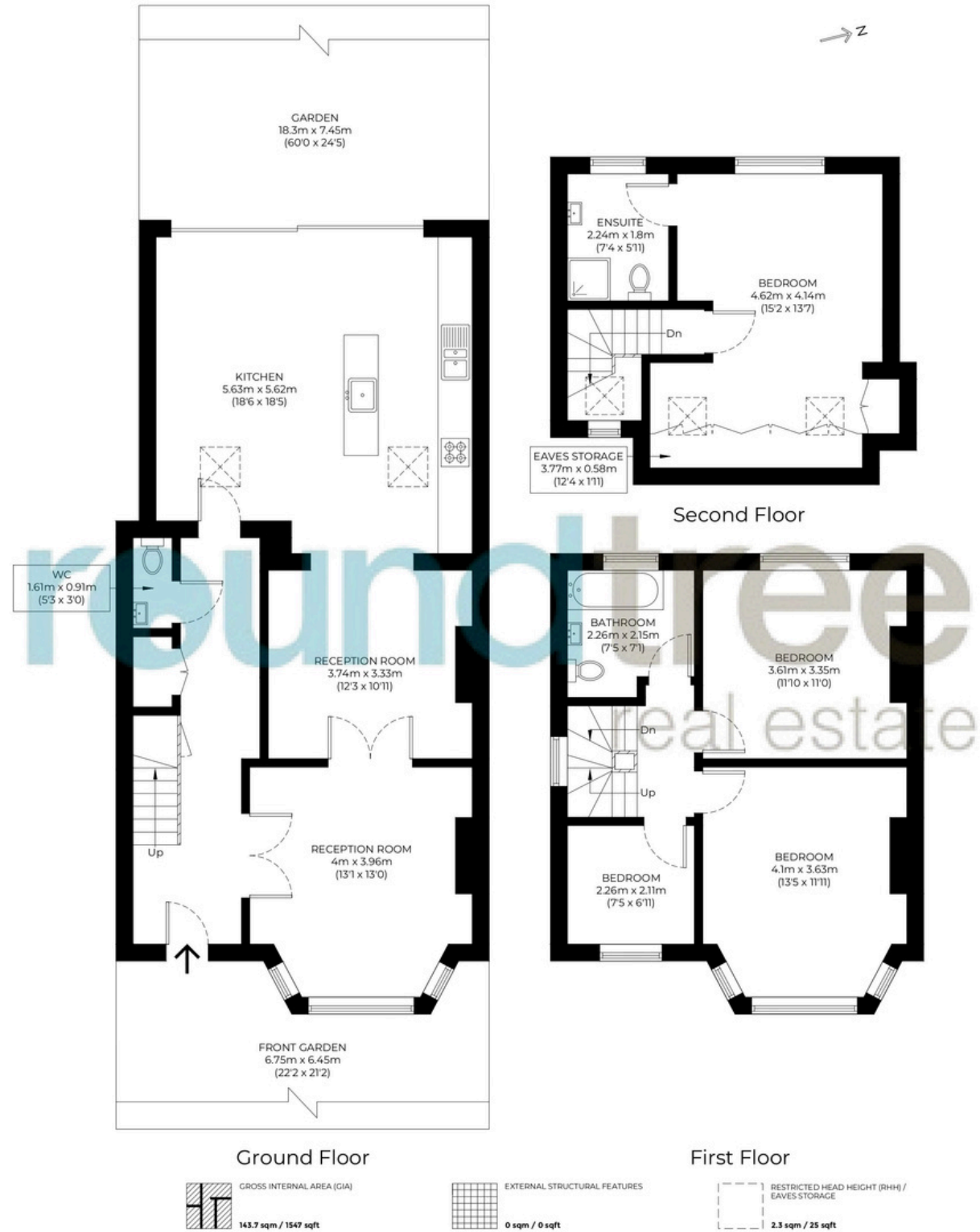




Floorplan

Approximate gross internal area

143.7 sqm / 1547 sqft



The floor plan is not to scale and measurements and areas shown are approximate and therefore should be used for illustrative purposes only. The plan has been prepared in accordance with the RICS code of Measuring Practice and whilst we have confidence that the information, it must not be relied on. Maximum widths and lengths are represented on the floor plan. If there is any aspect of particular importance, you should carry out or commission your own inspection of the property.

Hendon

Hendon is a cosmopolitan, multicultural area that benefits from a relaxed pace of life and a wide range of attractive amenities. Hendon's transport connections are excellent, with the M1 nearby and easy access to central London along the Northern Line. Thanks to its diverse population, Hendon has some of the best restaurants in north London, while its popularity with families ensures there is a good selection of schools.

While Hendon property prices have done well over the last few years, the area still represents a good-value option for renting or buying when compared against other parts of London.

020 8203 2111
www.theroundtree.com

roundtree
real estate

To register your interest:

020 8203 2111

sales@theroundtree.com

theroundtree.com

1 Sentinel Square, Brent Street Hendon, NW4 2EL

roundtree

real estate

General: While we endeavor to make our sales particulars fair, accurate and reliable, they are only a general guide to the property and, accordingly, if there is any point which is of particular importance to you, please contact the office and we will be pleased to check the position for you, especially if you are contemplating travelling some distance to view the property. Measurements: These approximate room sizes are only intended as general guidance. You must verify the dimensions carefully before ordering carpets or any built-in furniture. Services: Please note we have not tested the services or any of the equipment or appliances in this property, accordingly we strongly advise prospective buyers to commission their own survey or service reports before finalizing their offer to purchase. THESE PARTICULARS ARE ISSUED IN GOOD FAITH BUT DO NOT CONSTITUTE REPRESENTATIONS OF FACT OR FORM PART OF ANY OFFER OR CONTRACT. THE MATTERS REFERRED TO IN THESE PARTICULARS SHOULD BE INDEPENDENTLY VERIFIED BY PROSPECTIVE BUYERS OR TENANTS. NEITHER ROUNDTREE NOR ANY OF ITS EMPLOYEES OR AGENTS HAS ANY AUTHORITY TO MAKE OR GIVE ANY REPRESENTATION OR WARRANTY WHATEVER IN RELATION TO THIS PROPERTY.