



Flat D 43 Hornsey Rise Gardens, Hornsey, London, N19 3PS

£2,300 Per Week

- Close to Local Bars and Shops
- Top Floor Apartment

Flat D 43 Hornsey Rise Gardens, Hornsey N19 3PS

This delightful two bedroom top floor flat set within a well maintained terraced building on a residential road close to Crouch End and Archway.

The property comprises a spacious open plan living room and kitchen area, two double bedrooms and a modern fitted bathroom.

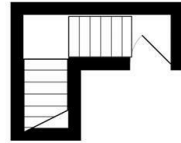
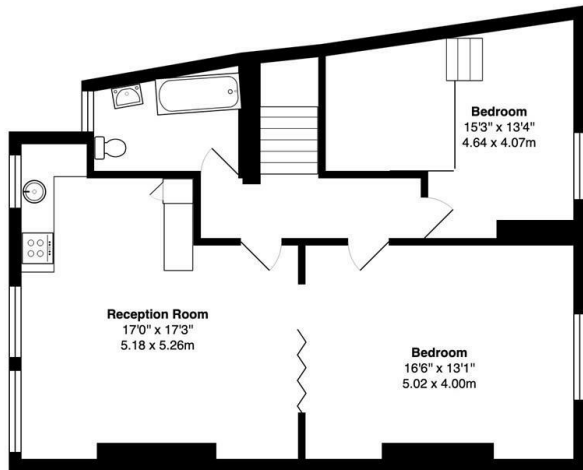
Archway Station which services the Northern Line and Upper Holloway Station servicing the Overground Line can both be found within easy walking distance. Other nearby options including Highgate Station (Northern Line) and various bus routes along surrounding roads.

Available Mid June 2026.



Council Tax Band: D



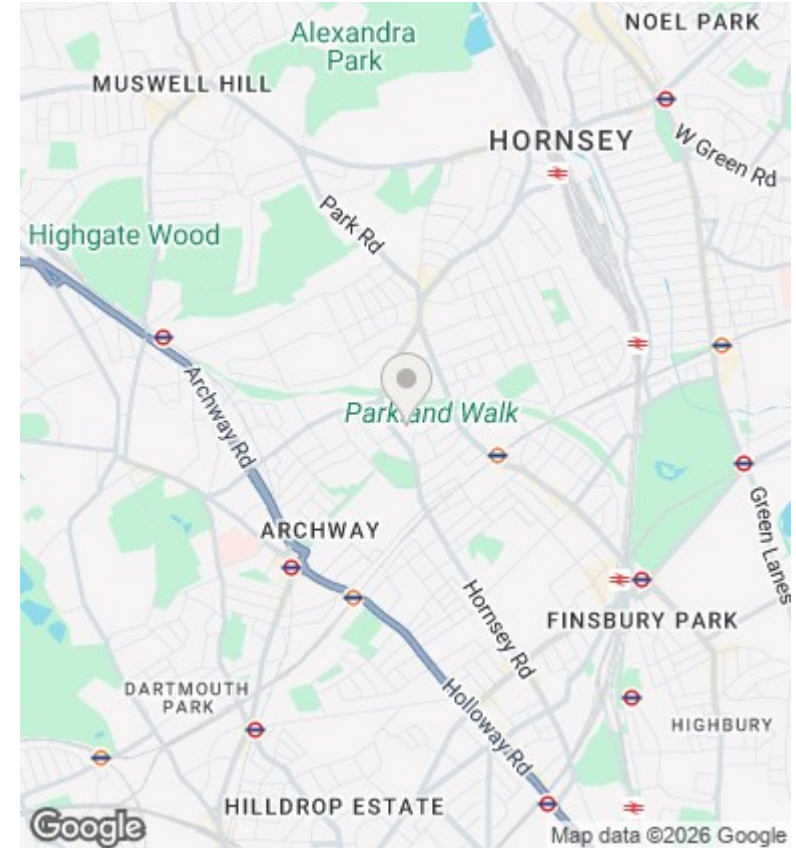


2nd floor

Hornsey Rise Gardens ,N19

Total Gross Area: 855 ft² ... 79.4 m²

All measurements are approximate and for identification guideline purposes only, not to scale.
Compliant with the RICS code of measuring practice



Directions

Viewings

Viewings by arrangement only. Call 02073593191 to make an appointment.

Council Tax Band

D

Energy Efficiency Rating		Current	Potential
Very energy efficient - lower running costs			
(92 plus) A			
(81-91) B			
(69-80) C			79
(55-68) D		59	
(39-54) E			
(21-38) F			
(1-20) G			
Not energy efficient - higher running costs			
England & Wales		EU Directive 2002/91/EC	

Full description

Stylish and contemporary top floor 2 bed flat. Located on a lovely leafy road in Hornsey. 2 double bedrooms and modern fitted bathroom. 15 minutes from Archway tube.





