



15 Ringmer Gardens, London, N19 4SB

£1,600 Per Month

- Close to public transport
- Shops and Amenities Nearby
- Finsbury Park Tube
- Second floor

15 Ringmer Gardens, London N19 4SB

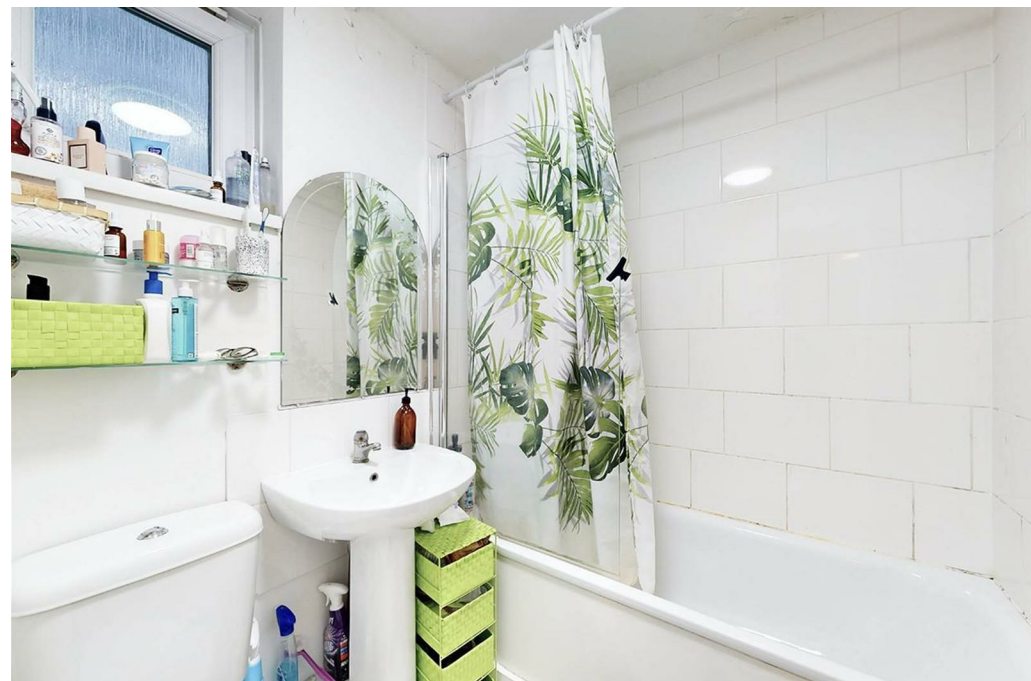
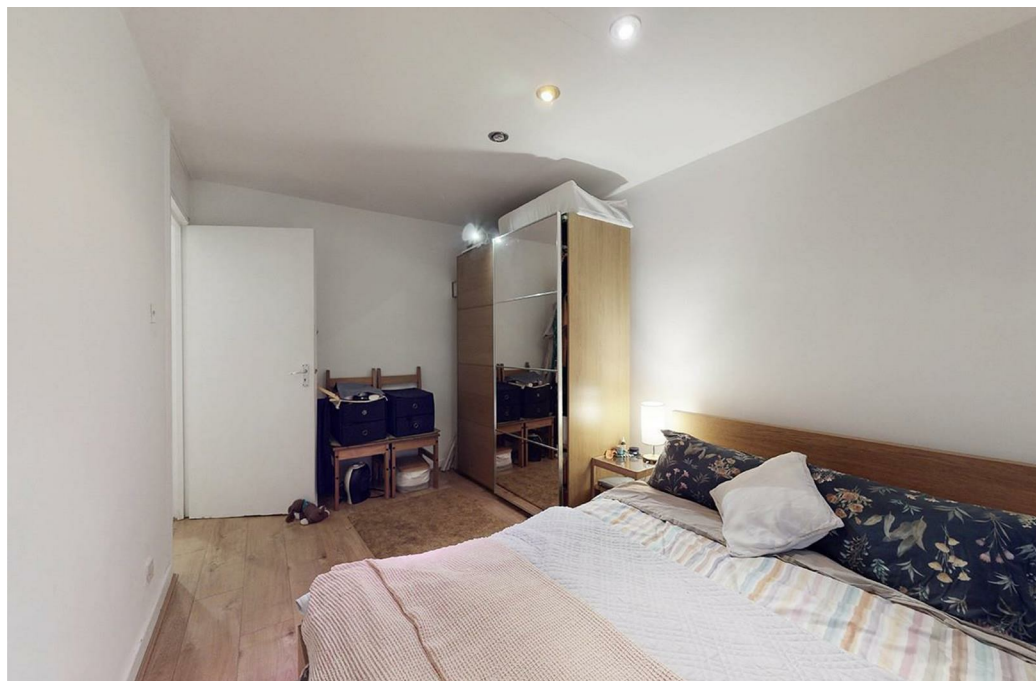
Alwyne Estates are pleased to present this superb one-bedroom flat in a purpose-built block, conveniently located close to the amenities of Hornsey Road and Holloway Road.

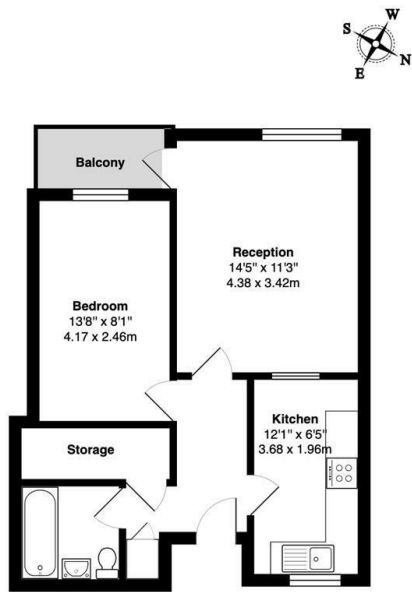
The property comprises a spacious reception room, double bedroom, modern kitchen, fully tiled bathroom with bath and shower, and a private balcony.

Offered part furnished and available from mid-June. Finsbury Park and Archway Underground stations are approximately 15 minutes' walk away, providing access to the Victoria and Northern lines.



Council Tax Band: C

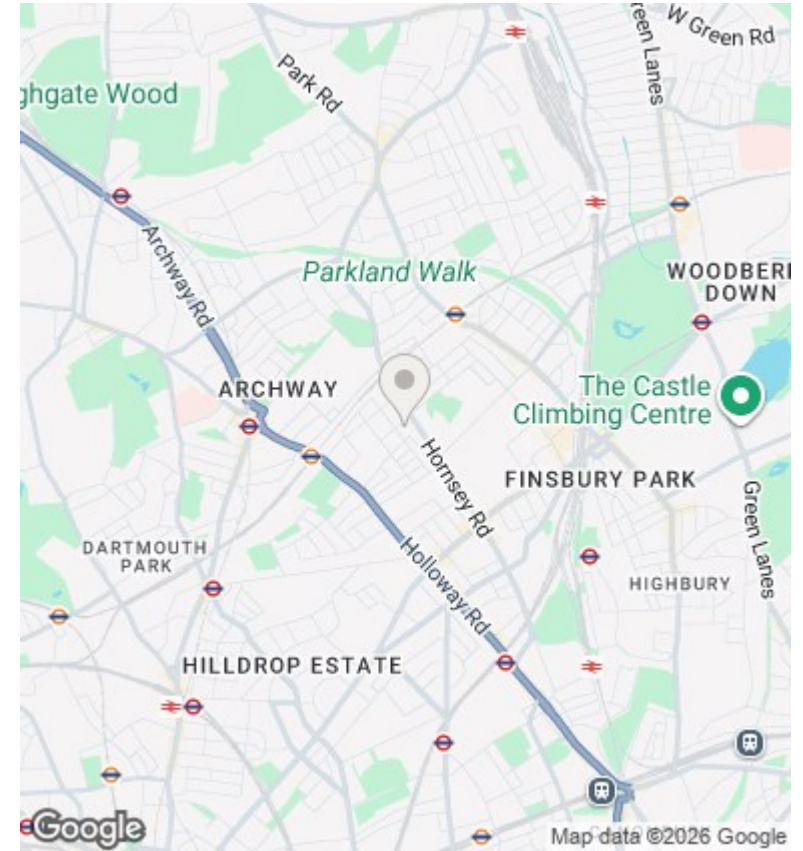




2nd Floor
Ringmer Gardens, N19

Total Gross Area: 497 ft² ... 46.2 m² (excluding balcony)

All measurements are approximate and for identification guideline purposes only, not to scale.
Compliant with the RICS code of measuring practice



Directions

Viewings

Viewings by arrangement only. Call 02073593191 to make an appointment.

Council Tax Band

C

Energy Efficiency Rating		
	Current	Potential
Very energy efficient - lower running costs		
(92 plus) A		
(81-91) B		
(69-80) C	73	77
(55-68) D		
(39-54) E		
(21-38) F		
(1-20) G		
Not energy efficient - higher running costs		
England & Wales	EU Directive 2002/91/EC	

Full description

Alwyne Estates are pleased to present this superb one bedroom flat, well situated in the heart of Finsbury Park and Archway Underground stations are around 15 minutes walk away, s



