



Bushey Grove Road, Bushey  
**£1,495pcm**

[www.deykingharia.co.uk](http://www.deykingharia.co.uk)  
Tel: 01923 831 020  
45 Langley Way, WD17 3EA

This beautifully presented one bedroom first floor flat in Bushey has been recently renovated throughout to a high modern standard, offering contemporary living in a sought after residential location.

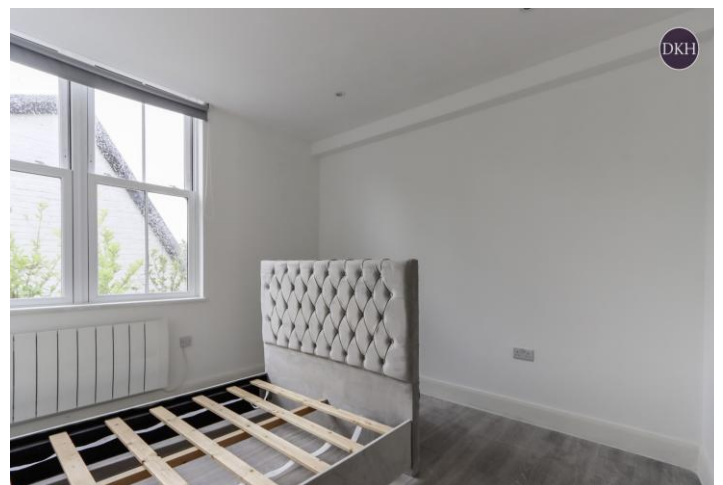
The property features a bright open plan kitchen and living area complete with integrated appliances, spacious double bedroom and modern tiled shower room.

Further benefits include wooden flooring throughout and high performance glazing.

The property is situated nearby excellent transport links, with both Bushey Station and Watford High Street within approximately a 15 minute walk. Both stations provide direct trains into London Euston in under 20 minutes, making the property ideal for commuters. Local shops, amenities, restaurants, and green spaces are also within easy reach.

This property is available now on an unfurnished basis.

- Contemporary One Bedroom Flat
- First Floor
- Integrated Modern Kitchen
- Walking Distance to Bushey and Watford High St Station
- Council Tax Band C
- Available Immediately
- Unfurnished





## Bushey Grove Road, Bushey

Approximate Gross Internal Area = 430 Sq Ft / 39.9 Sq M

This plan is not to scale and must be used as layout guidance only. All measurements and areas are approximate and should not be relied upon to provide accurate information. This plan must not be relied upon when making property valuations, design considerations or any other such relevant decisions. We accept no responsibility or liability (whether in contract, tort or otherwise) in relation to any loss whatsoever arising from or in connection with any use of this plan or the adequacy, accuracy or completeness of it or any information within it.