

Douglas Avenue Motspur Park, KT3 6HT

£675,000 Freehold



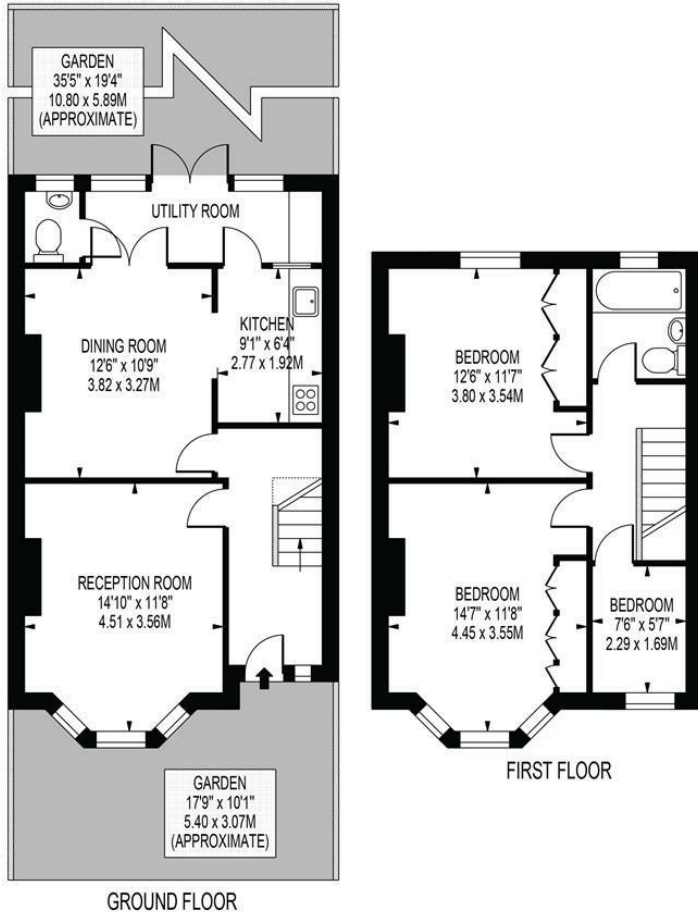
Rare to the market, this charming three-bedroom terraced house is situated on a sought-after road in Motspur Park and offers a wonderful blend of character, space and convenience.

The property features two spacious reception rooms, a convenient ground floor WC, and three well-proportioned bedrooms. To the rear, a delightful south-west facing garden provides the perfect setting for outdoor entertaining, family enjoyment, or simply relaxing in the sunshine.

Ideally located within easy reach of Motspur Park Station, the property benefits from regular rail services into Central London, making it an excellent choice for commuters. Motspur Park is a popular residential area known for its family-friendly atmosphere and excellent transport connections.

DOUGLAS AVENUE

APPROXIMATE GROSS INTERNAL FLOOR AREA: 994 SQ FT - 92.34 SQ M



FOR ILLUSTRATION PURPOSES ONLY

THIS FLOOR PLAN SHOULD BE USED AS A GENERAL OUTLINE FOR GUIDANCE ONLY AND DOES NOT CONSTITUTE IN WHOLE OR IN PART AN OFFER OR CONTRACT. ANY INTENDING PURCHASER OR LESSEE SHOULD SATISFY THEMSELVES BY INSPECTION, SEARCHES, ENQUIRIES AND FULL SURVEY AS TO THE CORRECTNESS OF EACH STATEMENT. ANY AREAS, MEASUREMENTS OR DISTANCES QUOTED ARE APPROXIMATE AND SHOULD NOT BE USED TO VALUE A PROPERTY OR BE THE BASIS OF ANY SALE OR LET.



- Rare to the market
- Charming terraced house
- Three bedrooms
- Two reception rooms
- Ground Floor WC
- Delightful south-west facing rear garden
- Easy access to Motspur Park Station
- Regular services to Central London
- EPC - TBC
- Council Tax Band - D

Energy Efficiency Rating		Current	Potential
Very energy efficient - lower running costs			
(92 plus)	A		
(81-91)	B		
(69-80)	C		
(55-68)	D		
(39-54)	E		
(21-38)	F		
(1-20)	G		
Not energy efficient - higher running costs			
England & Wales		EU Directive 2002/91/EC	

For Free Mortgage Quote and Best Mortgage Rates, call Ellisons Mortgage Advisor on 0208 944 9595



Although these particulars are believed to be correct, their accuracy is not guaranteed and they do not form part of any contract.

Celebrating 30 years of successful Sales and Lettings in Merton

