



6

Barrow Lane, Corscombe, Dorchester, Dorset

# 6

Barrow Lane  
Corscombe  
Dorchester  
Dorset DT2 0NX

A four bedroom detached family home where timeless character meets modern comfort in this charming rural stone-front house.



- Detached Modern Family Home
  - Four double bedrooms
  - Two Bathrooms
  - Modern kitchen
  - Modern Bathroom
    - Rural views
  - Stunning garden
  - Double garage

Guide Price **£595,000**

Freehold

Beaminster Sales  
01308 863100  
[beaminster@symondsandsampson.co.uk](mailto:beaminster@symondsandsampson.co.uk)



## INTRODUCTION

This charming 1980s stone-front home effortlessly combines traditional character with modern living. Nestled in a peaceful rural setting, the property offers a perfect blend of spacious, light-filled interiors and beautifully landscaped gardens. From the inviting sitting room with its natural stone features to the open-plan kitchen and dining area opening onto decking, this home is designed for comfortable family life and relaxed entertaining.

## THE PROPERTY

Step into the sitting room, a lovely, light-filled space with windows to the side and rear, creating a warm and welcoming atmosphere. The wood-burning stove set within a charming natural stone surround adds both character and cozy comfort.

Flowing seamlessly from here is the open-plan kitchen and dining area, designed for family living and entertaining. Glazed trifold doors open out onto decking, inviting the outdoors in. The kitchen features a central island and plenty of base units, with additional windows enhancing the bright, airy feel. A glazed back door offers convenient access to the outside.

Nearby, a handy WC is equipped with a wash hand basin and close-coupled WC for guests' convenience.

The garage is accessible both through large front doors and an internal door from the hallway off the kitchen, offering practical storage with power and lighting.

Upstairs, the master bedroom enjoys dual-aspect windows showcasing beautiful rural views. It benefits from ample built-in wardrobes with

reclaimed stripped pitch pine doors and has direct access to an en-suite bathroom, which features a shower, wash hand basin, and WC, complemented by an obscure glazed window for privacy.

The second bedroom is a comfortable double with windows to the side and rear, while the third bedroom also offers generous space and a rear-facing window. The fourth bedroom, bright and versatile, looks out to the front and could serve as a bedroom, guest room, or study.

The main bathroom is fitted with a bath and shower over, wash hand basin, and WC. Two Velux windows flood the room with natural light while maintaining privacy.

## OUTSIDE

Outside, you'll find off-road parking and a charming small front garden. The main garden is a delightful outdoor space featuring a large patio and additional decking accessible from the kitchen/dining room. Beyond this, the gently sloping garden offers a mix of lawn, shrubs, and mature trees, creating a peaceful and inviting setting.

## SITUATION

Corscombe is a Conservation village in an area designated as being of 'Outstanding Natural Beauty'. The village lies approximately 4 miles to the north-east of Beaminster and comprises small character cottages, larger period houses, farms and a blend of modern houses. Amenities include a village hall, church and the 'Fox Inn'. The County town of Dorchester is about 16 miles to the east, Yeovil about 10 miles to the north and the nearest coast is at West Bay some 12 miles. The attractive town of Beaminster offers many facilities including a good range of shops, churches, post office, library, two schools, health centres, other professional services and many social and sporting facilities.

## DIRECTIONS

What3words ///shuttled.supreme.nuzzling

## SERVICES

Mains water, electricity and drainage are connected.

Broadband coverage

Standard and superfast broadband is available.

<https://checker.ofcom.org.uk/en-gb/broadband-coverage>

Mobile phone

There is mobile phone coverage in the area, please refer to Ofcom's website for more details. <https://www.ofcom.org.uk/mobile-coverage-checker>

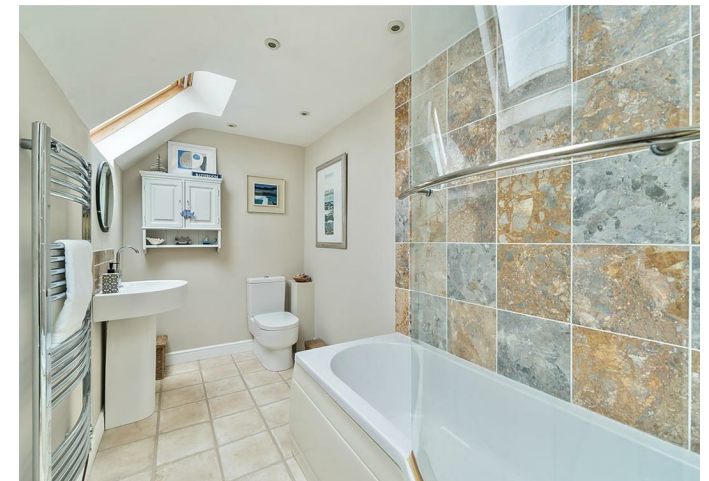
## LOCAL AUTHORITY

Dorset Council - <https://www.dorsetcouncil.gov.uk>

Council Tax Band E.

## MATERIAL INFORMATION

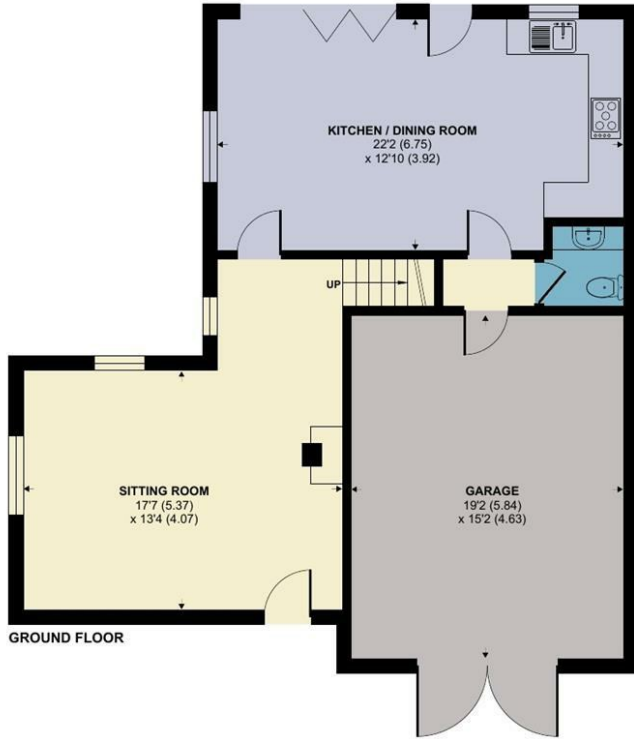
Covenants : Not to use or permit to be used Numbers 3 4 or 6 Barrow Lane or any buildings erected thereon otherwise than for private purposes and not to do or permit to be done thereon anything which may be or become a nuisance to Mr Pritchard or his successors in title.



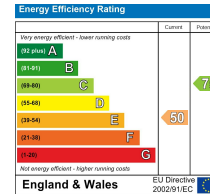


# Barrow Lane, Corscombe, Dorchester

Approximate Area = 1517 sq ft / 140.9 sq m  
 Garage = 291 sq ft / 27 sq m  
 Total = 1808 sq ft / 167.9 sq m  
 For identification only - Not to scale



Floor plan produced in accordance with RICS Property Measurement 2nd Edition, Incorporating International Property Measurement Standards (IPMS2 Residential). © nichecom 2025. Produced for Symonds & Sampson. REF: 1323917



BEA/3828/MED/21.05.26



01308 863100

beaminsters@symondsandsampson.co.uk  
 Symonds & Sampson LLP  
 36, Hoghill Street,  
 Beaminster, Dorset DT8 3AA



**Important Notice:** Symonds & Sampson LLP and their clients give notice that they have no authority to make or give any representations or warranties regarding the property. These particulars do not form part of any offer or contract and must not be relied upon as statements of fact. Some descriptions and images may have been AI-assisted; while reviewed for accuracy, interested parties should verify key details through inspection or by contacting our agents. All measurements and distances are approximate. Text, photographs, and plans are for guidance only and may not be comprehensive. It should not be assumed that the property has all necessary planning or regulatory consents, and no services, equipment, or facilities have been tested. No investigations have been made into pollution or contamination; purchasers must make their own enquiries. The property is sold subject to all existing wayleaves, easements, and rights of way (public or private), whether mentioned or not. Vendors are not required to define such rights.