



Creighton Avenue East Finchley N2

Monthly Rental Of £2,350



800 Finchley Road, Hampstead Garden Suburb, London, NW11 7TJ
020 8458 5000
sales@litchfields.com
www.litchfields.com

Offices also in Highgate



A fabulous Two Bed, Two Bath flat set on the ground floor of this charming Grade II listed Church conversion boasting direct access to a large private patio garden to the front of the property, with ample off street parking to the rear on a first come first served basis. Featuring an abundance of period features including lovely stained glass windows. Comprising entrance hall, open plan kitchen with lounge/dining room, principal fitted bedroom with en-suite shower room, further fitted double bedroom and family bathroom. Conveniently placed adjacent to the extensive shops, supermarkets, coffee shops, bars & restaurants of East Finchley High Road and approx. 10 minute walk to the Tube Station on the northern line. Furnished. EPC D.



2

2

1

D

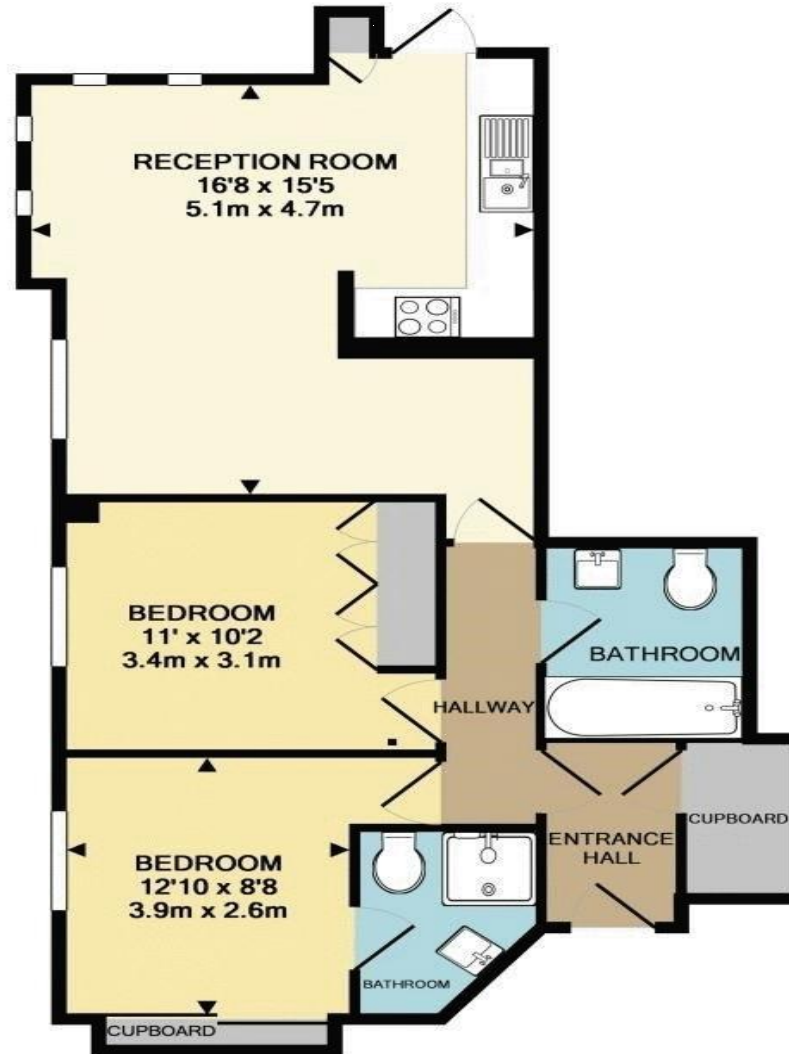


- Two Bed, Two Bath Garden Flat
- Ground floor of Church conversion
- Modern open plan fully fitted Kitchen
- Lounge/Dining room
- Principal Fitted Bedroom with en-suite Shower room
- Double fitted bedroom
- Family Bathroom
- Private patio Garden & Parking to the rear
- Approx 10 minutes walk to East Finchley Tube Station on Northern Line
- Furnished









ASHLAR COURT
 TOTAL APPROX. FLOOR AREA 656 SQ.FT. (60.9 SQ.M.)
 Measurements are approximate. Not to scale. Illustrative purposes only