

SW19

'it's all in the postcode...'



SW19

Myrna Close

Colliers Wood

£495,000

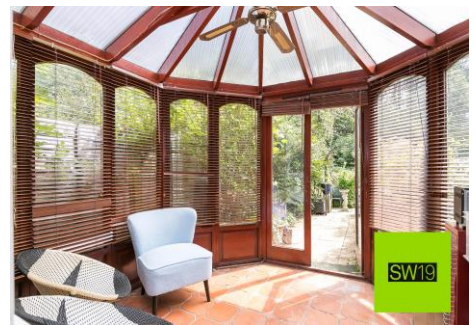
- Two double bedroom house
- Off street parking
- Conservatory
- Freehold
- No chain



SW19



SW19



SW19

020 8544 2828

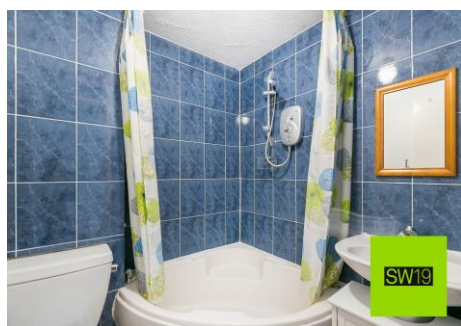
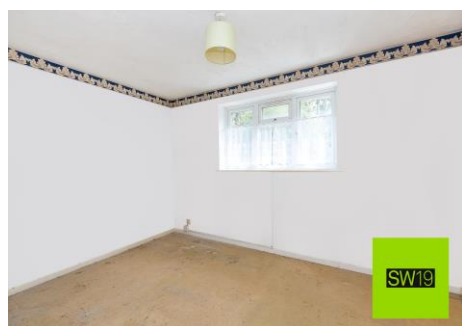
Wimbledon: Wimbledon Park: Colliers Wood

www.SW19.com

SW19 Estate Agents Ltd. Is registered in England & Wales No. 05508737

'it's all in the postcode...'

A stunning two double bedroom house featuring a beautiful conservatory, situated in a prime location with excellent access to both Colliers Wood tube station (Northern line) and Tooting station (Southern and Thameslink). This property is an ideal home for first-time buyers or a young family. It includes a fitted kitchen, a living room that leads out to the private garden, and off-street parking. Upstairs, there are two double bedrooms and a family bathroom with a shower over the bath. A must-see property. Early viewing is recommended.



020 8544 2828

Wimbledon: Wimbledon Park: Colliers Wood

www.SW19.com

SW19 Estate Agents Ltd. Is registered in England & Wales No. 05508737

'it's all in the postcode...'

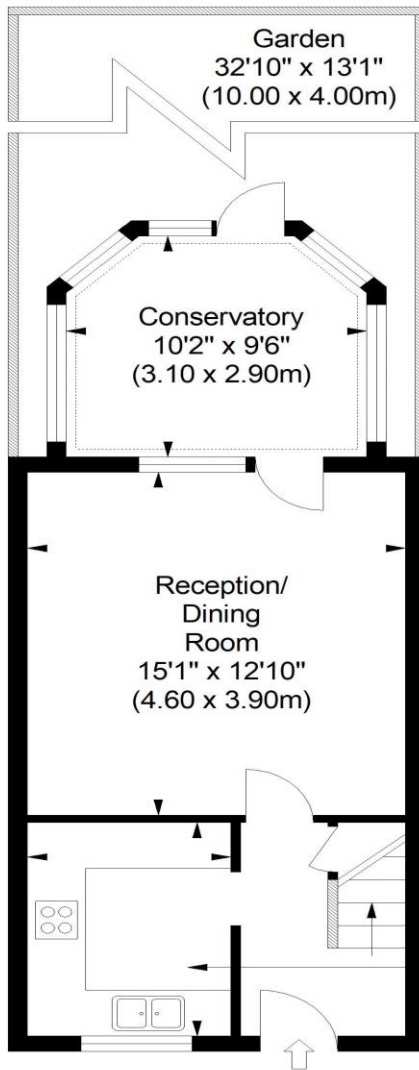
Myrna Close

Approximate Gross Internal Area (Excluding Conservatory)

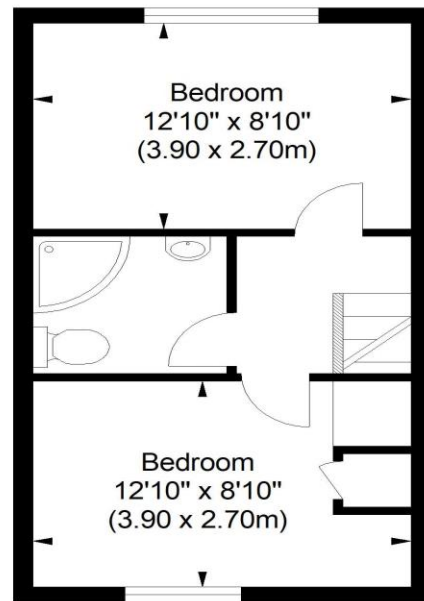
621 sq ft / 57.72 sq m

Approximate Gross Internal Area (Including Conservatory)

718 sq ft / 66.77 sq m



Ground Floor



First Floor

SW19

ILLUSTRATION FOR IDENTIFICATION PURPOSES ONLY

ALL MEASUREMENTS ARE MAXIMUM, AND INCLUDE WINDOW BAYS AND WARDROBES WHERE APPLICABLE
THIS PLAN MUST NOT BE REPRODUCED BY ANY OTHER PERSON WITHOUT PERMISSION

These particulars are for guidance only and should not be relied upon as a statement or representation of fact. All measurements given are approximate only and should not be relied upon for ordering carpets, equipment etc. Purchasers should satisfy themselves by inspection or otherwise as to the accuracy of the

020 8544 2828

Wimbledon: Wimbledon Park: Colliers Wood

www.SW19.com

SW19 Estate Agents Ltd. Is registered in England & Wales No. 05508737

'it's all in the postcode...'

statements contained within. Neither SW19 estate agents ltd or related companies or their employees can confirm structural conditions of the property or that any appliances or other facilities are in working order. Purchasers are strongly recommended to arrange their own survey.

020 8544 2828

Wimbledon: Wimbledon Park: Colliers Wood

www.SW19.com

SW19 Estate Agents Ltd. Is registered in England & Wales No. 05508737

'it's all in the postcode...'