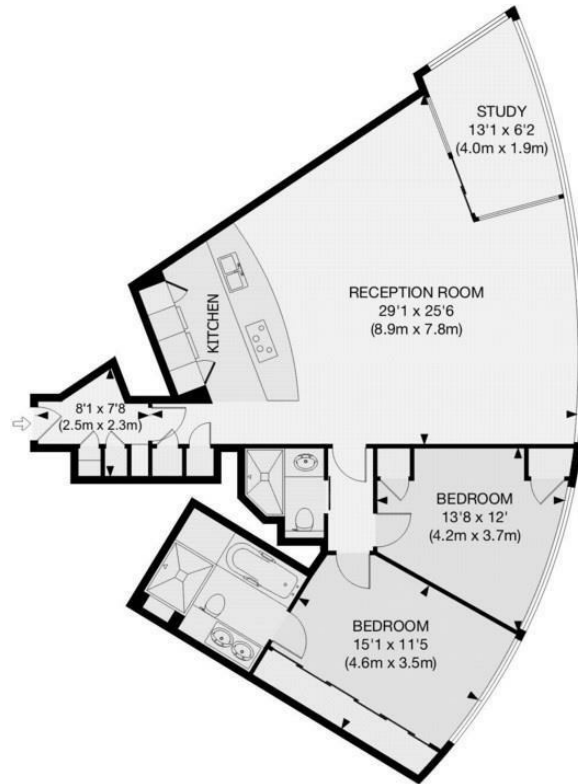




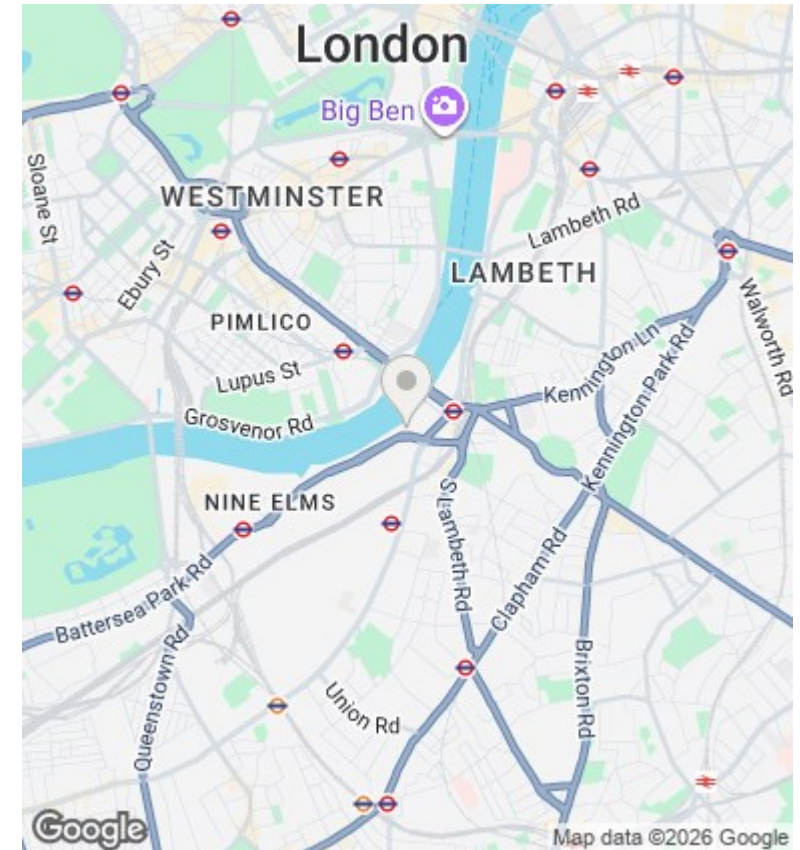
## The Tower, 1 St George Wharf, Vauxhall SW8 2DA

£7,095 Per Month

- 24/7 concierge
- cinema
- allocated parking space
- gym/spa
- under floor heating
- river views
- swimming pool overlooking river
- air cooling
- dining room / meeting room



APPROX. GROSS INTERNAL FLOOR AREA 1075 SQ FT / 100 SQ M



### Viewings

Viewings by arrangement only.  
Call 02077225022 to make an appointment.

### Council Tax Band

H

### EPC Rating:

B

| Energy Efficiency Rating                           |  | Current                 | Potential |
|--|--|-------------------------|-----------|
| <i>Very energy efficient - lower running costs</i> |  |                         |           |
| (92 plus) <b>A</b>                                 |  |                         |           |
| (81-91) <b>B</b>                                   |  | 82                      | 83        |
| (69-80) <b>C</b>                                   |  |                         |           |
| (55-68) <b>D</b>                                   |  |                         |           |
| (39-54) <b>E</b>                                   |  |                         |           |
| (21-38) <b>F</b>                                   |  |                         |           |
| (1-20) <b>G</b>                                    |  |                         |           |
| <i>Not energy efficient - higher running costs</i> |  |                         |           |
| <b>England &amp; Wales</b>                         |  | EU Directive 2002/91/EC |           |