



122 Water Lane, Oakington,  
Cambridge, CB24 3AL

**Guide price £475,000**

 4  1  1  E

## 122 Water Lane Oakington, CB24 3AL

- Four bedroom detached
- Double garage
- Updating required
- Great potential

A detached 4-bedroom house requiring updating, situated on a corner plot with space to extend, a double garage, and no chain.

This four-bedroom family house is perfect for those seeking a project and an opportunity to extend (subject to consent).

The accommodation does require updating, but is well proportioned and includes a good-sized, L-shaped living/dining room with large windows overlooking the front and rear gardens, plus doors to the rear garden and a fireplace with a gas fire. The kitchen has plenty of fitted cupboards, an oven, hob, and space for appliances, and a door to the side garden. There is a good-sized hall with a cloakroom and WC.

Upstairs, there are four bedrooms, two of which have fitted cupboards. The bathroom has a bath, a separate shower cubicle, a basin and a WC.

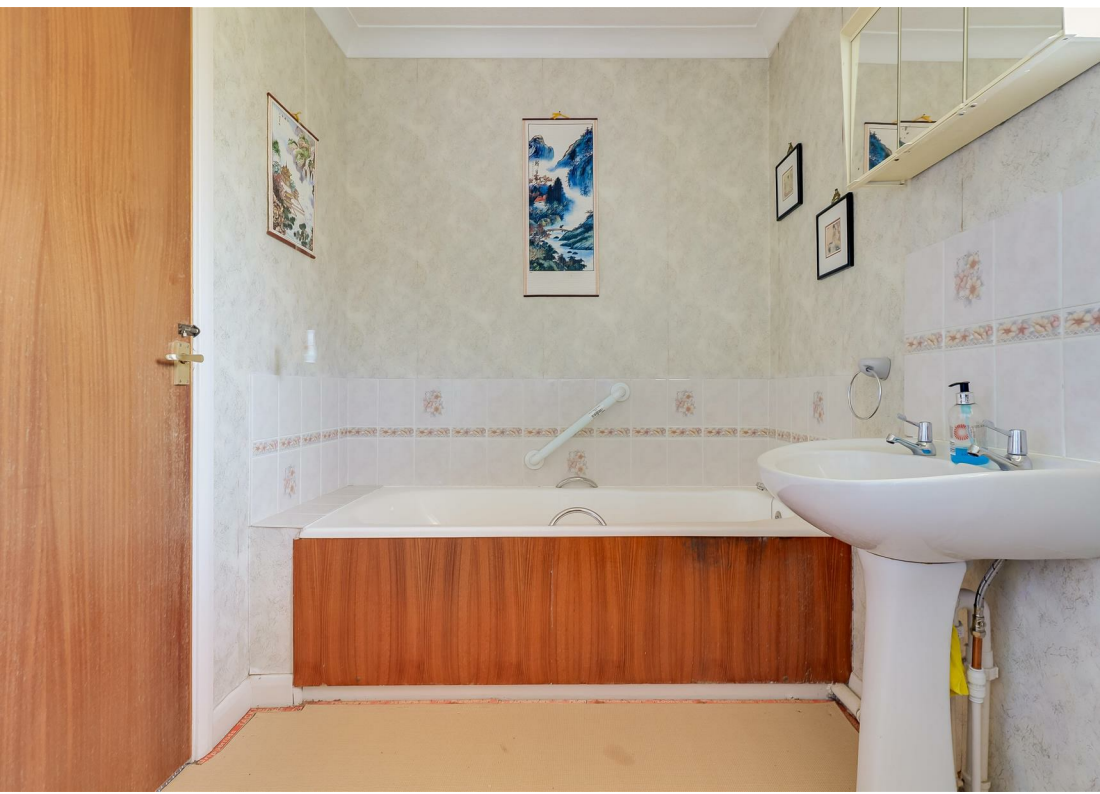
The house has double glazing and gas central heating.

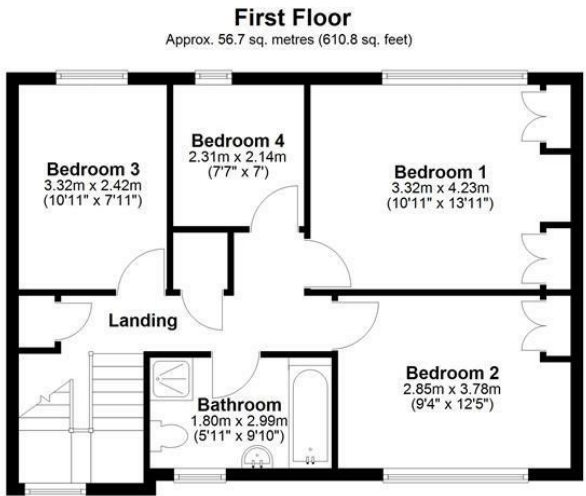
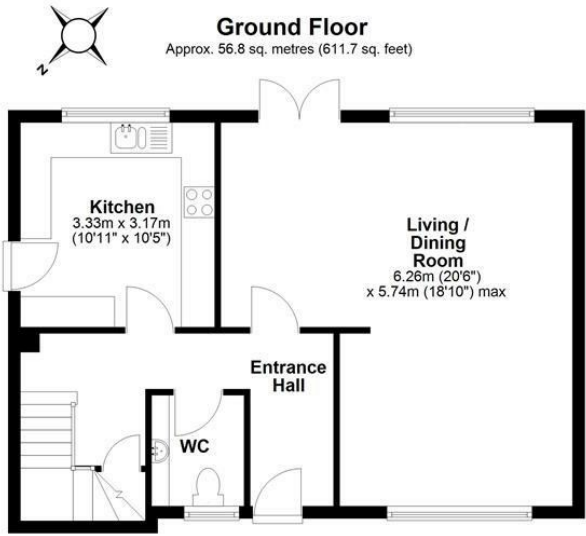




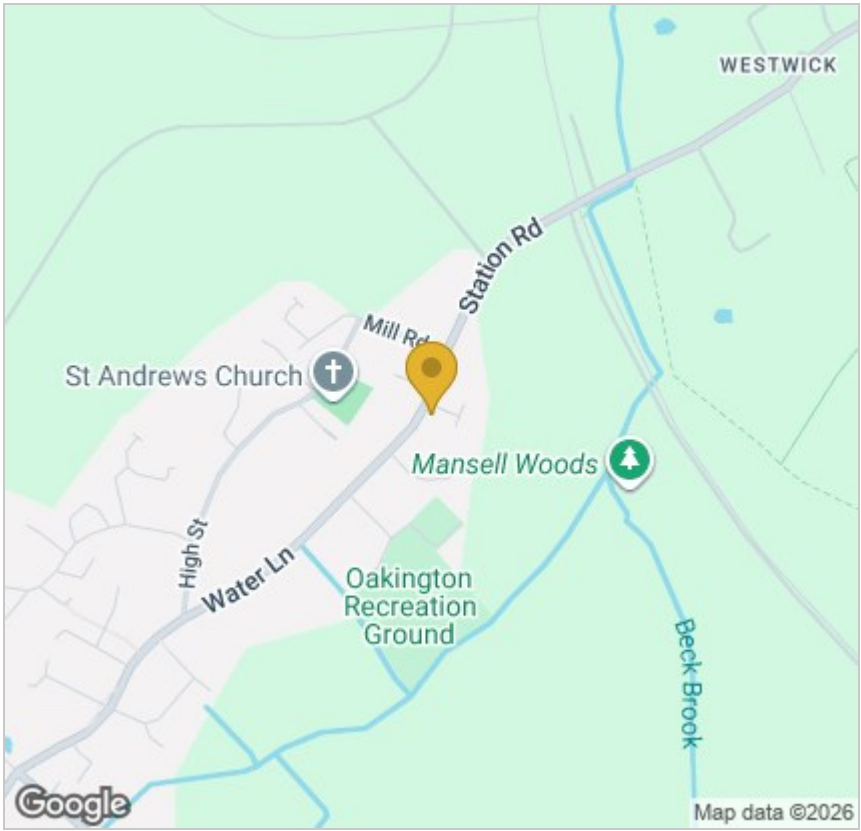
The property has a good-sized corner plot with gardens at the front, side, and rear. The side and rear gardens offer good scope for an extension. At the end of the garden, there is a driveway and parking, plus access to the double garage.

What3words: ///freely.guilty.faster

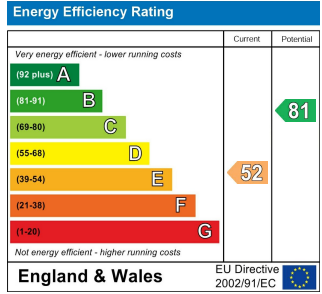




Total area: approx. 113.6 sq. metres (1222.5 sq. feet)



### Energy Efficiency Graph



Tenure: Freehold  
Council tax band: E

These particulars, whilst believed to be accurate, are set out as a general outline only for guidance and do not constitute any part of an offer or contract. Intending purchasers should not rely on them as statements of representation of fact, but must satisfy themselves by inspection or otherwise as to their accuracy. No person in this firm's employment has the authority to make or give any representation or warranty in respect of the property.

Cambridge Victoria  
154-156 Victoria Road, Cambridge CB4 3DZ  
01223 439 888 theteam@grayandtoynbee.com

Cambridge South  
Adkins Corner, Perne Road, Cambridge CB1 3RU  
01223 439 555 theteam@grayandtoynbee.com

Waterbeach  
17 High Street, Waterbeach, CB25 9JU  
01223 949 444 waterbeach@grayandtoynbee.com