



Watchfield Court, Chiswick, W4
£750,000

WHITMAN & CO.
SALES · LETTINGS · COMMERCIAL

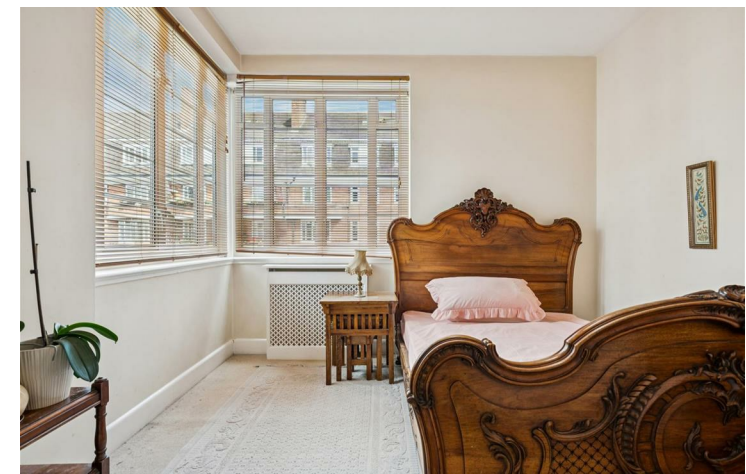


An exceptionally light and spacious, south-facing mansion flat, set within this extremely sought-after Art Deco building, centrally located for numerous amenities.

The property comprises two/three double bedrooms, 17' reception room leading onto the south-facing balcony, fully fitted kitchen, and bathroom and separate WC.

With hot water and central heating included in the service charge, lift access, residents' off-street parking, extensive communal gardens, and an estate manager.

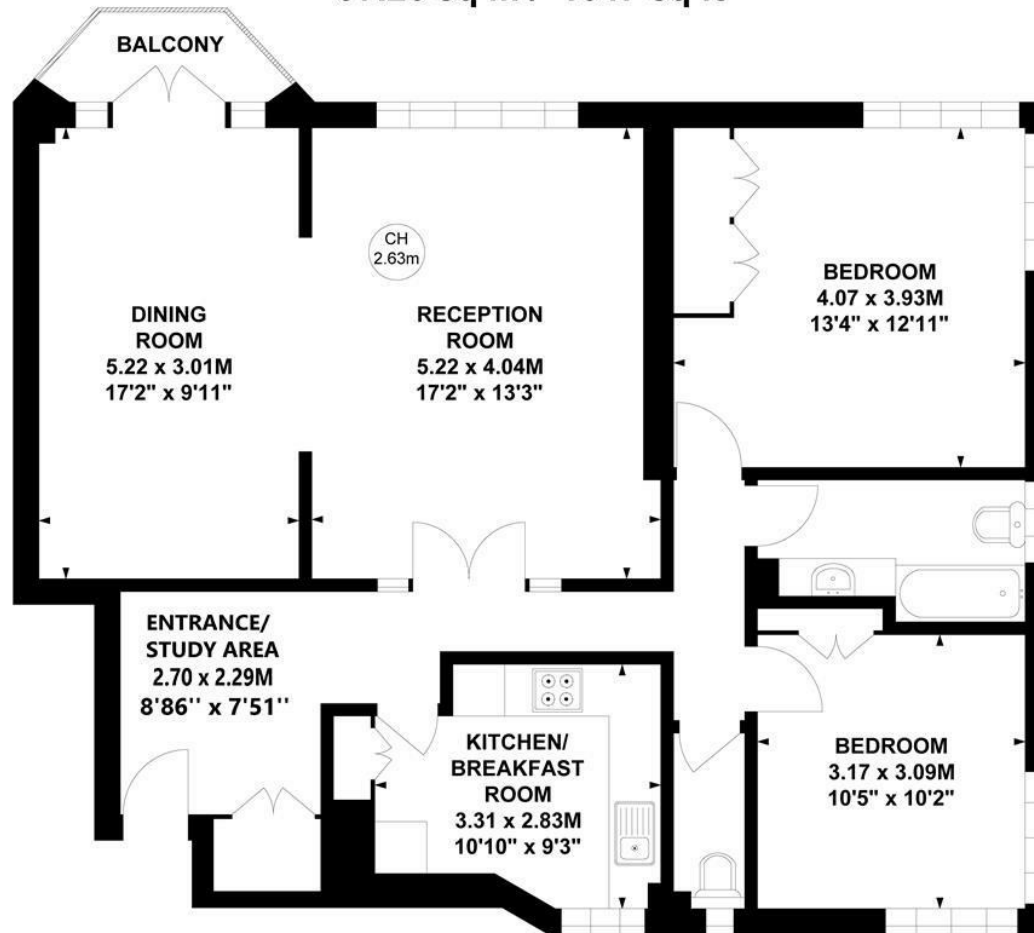
Ideally located just off Turnham Green, offering close proximity to Chiswick High Road's shops, bars and restaurants. No onward chain.



Watchfield Court, W4

Approximate gross internal area
97.26 sq m / 1047 sq ft

Key :
CH - Ceiling Height



Second Floor

Not to scale, for guidance only and must not be relied upon as a statement of fact.
All measurements and areas are approximate only

- Second floor flat
- 17' reception room
- Sought after development

- Two/three double bedrooms
- South facing balcony
- No onward chain

Tenure - Leasehold & Share of Freehold
Lease length - 168 Years remaining
Ground Rent - peppercorn
Service Charge - £7,883.52 pa
Local authority - Hounslow
Council tax - Band E

