



Heathview Court, Corringway, Hampstead Garden Suburb, NW11  
Share of Freehold  
£750,000



800 finchley road, hampstead garden suburb, london, nw11 7tj  
telephone 020 8458 5000 facsimile 020 8209 2068  
email sales@litchfields.com web litchfields.com  
offices also in highgate

A superb two double bedroom, two bathroom (1 en-suite) apartment, placed on the ground floor of this secure purpose built block of approx 999 sq ft (99.8 sq m), built in the early 90's with the added benefit of secure underground parking and direct access from the double reception room on to the communal garden. The flat is well fitted featuring a luxury Kitchen/breakfast room. Approximately 9 minutes walk to Golders Green Tube on the Northern Line, and high street with its array of restaurants, coffee shops, supermarkets and bus station. Early viewing of this fine home is strongly recommended. EPC C.

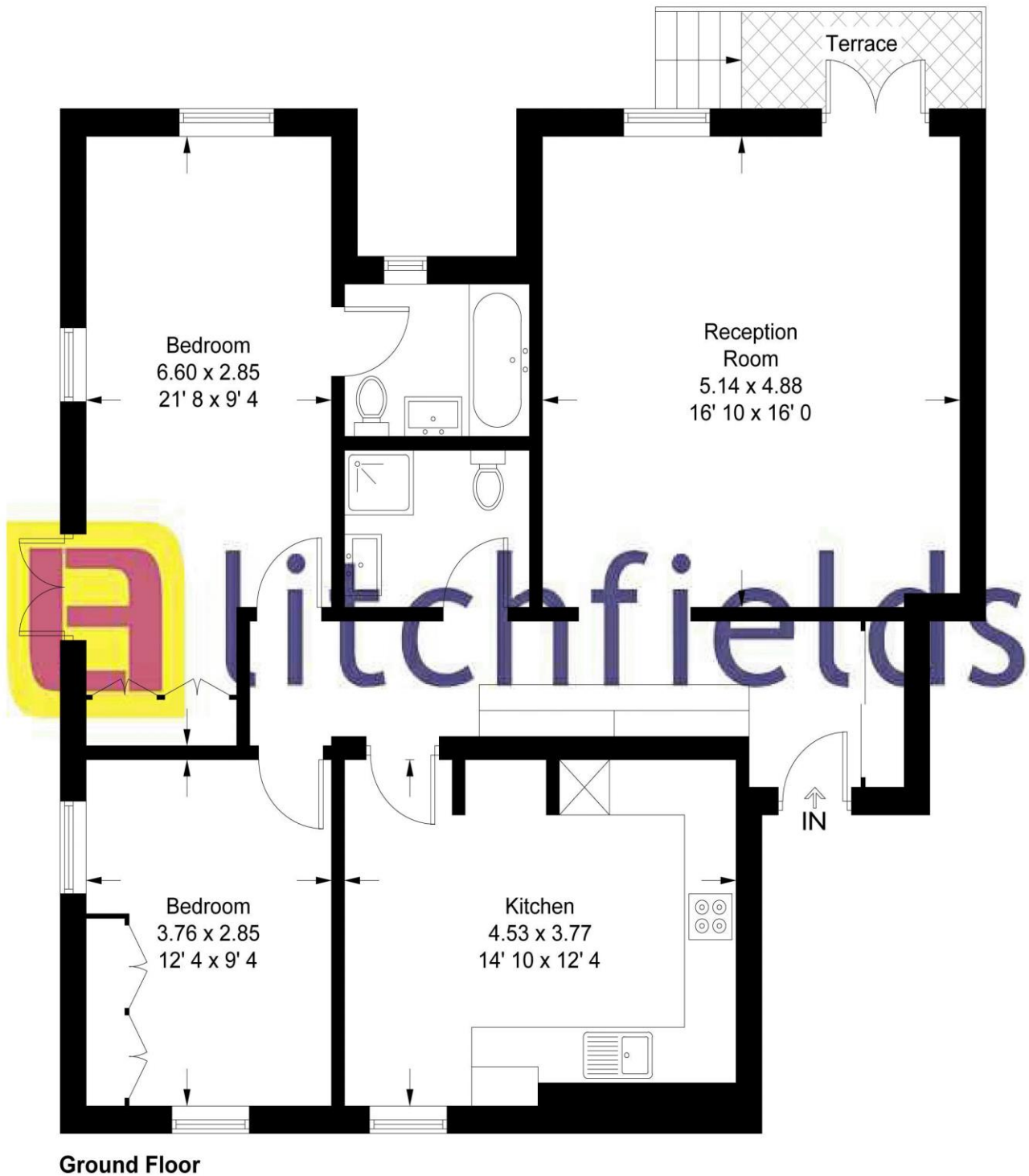


Two Double Bedroom Ground floor Apartment | Modern Purpose Built Block with Lift & Porter | Secure Underground Parking | Large fitted entrance hall | Double reception room | Luxury fully fitted Kitchen/Breakfast room | Two Bathrooms (1 en-suite) | Close walk to Golders Green Tube on the Northern Line | Short walk to The Heath Extension | Direct access onto the Communal Garden from reception room



# Heathview Court

Approximate Gross Internal Area = 999 sq ft / 92.8 sq m



**Ground Floor**

This plan is not to scale and must be used as layout guidance only. All measurements and areas are approximate and should not be relied upon to provide accurate information. This plan must not be relied upon when making property valuations, design considerations or any other such relevant decisions. We accept no responsibility or liability (whether in contract, tort or otherwise) in relation to any loss whatsoever arising from or in connection with any use of this plan or the adequacy, accuracy or completeness of it or any information within it.