



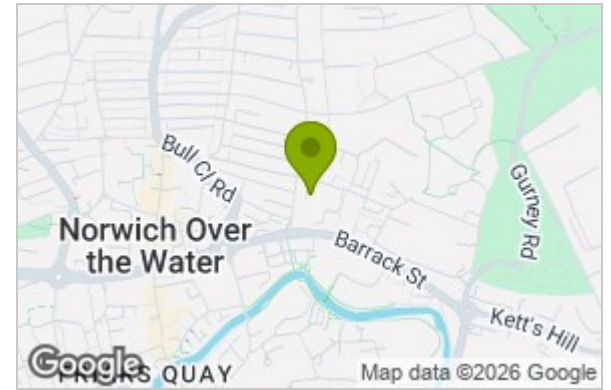
1 Brewers Court
Norwich, NR3 1LY
£1,100 Per month



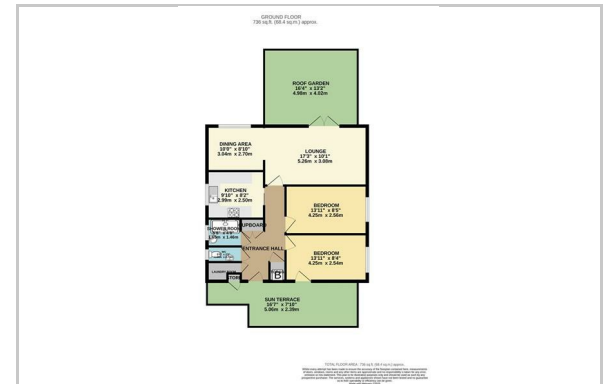
1 Brewers Court, Norwich, NR3 1LY

This two-bedroom coach house is located in the sought-after NR3 area of Norwich and offers a rare combination of contemporary living and generous outdoor space. Completely detached with no adjoining neighbours, the property is ideal for professionals, couples, or anyone looking for a low-maintenance home in a thriving community.

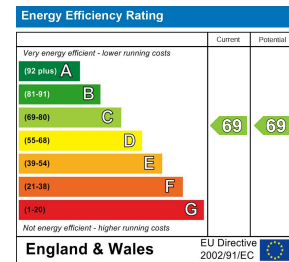
Area Map



Floor Plan



Energy Efficiency Graph



These particulars, whilst believed to be accurate are set out as a general outline only for guidance and do not constitute any part of an offer or contract. Intending purchasers should not rely on them as statements of representation of fact, but must satisfy themselves by inspection or otherwise as to their accuracy. No person in this firm's employment has the authority to make or give any representation or warranty in respect of the property.