



Dulwich Village, SE21 | £2,650 Per Calendar
Month

02087028111

dulwichvillage@pedderproperty.com

pedder
We live local

In General

- Two double bedrooms
- Kitchen/diner
- Bright reception room
- Split level
- Private entrance
- Unfurnished
- Available end of July
- Village location

In Detail

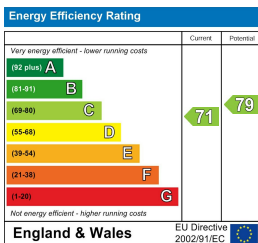
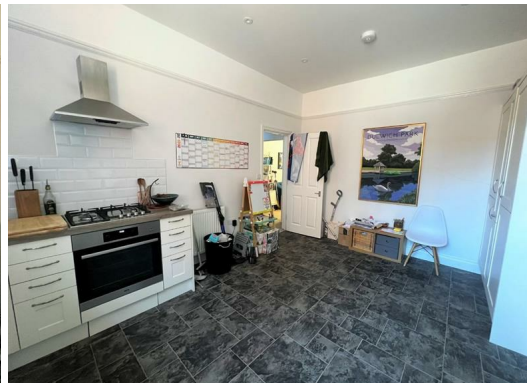
A stunning huge two double bedroom apartment to rent in the heart of Dulwich Village.

A private entrance leads into a long entrance hall which is a great space to keep shoes, pushchairs and bikes away from your main living space.

Stairs lead up to the first floor which has a utility area with washing machine, dishwasher and airing cupboard, bathroom, a beautifully bright reception room overlooking the village and a separate kitchen diner.

On the top floor are two double bedrooms. Situated in the very center of Dulwich Village the local boutique shops and restaurants could not be closer and North Dulwich Station is a short stroll away with regular links to London Bridge.

EPC: C | Council Tax Band: E | Available Late July | Unfurnished | HD: £611.53 | SD: £3,057.69



Pedder Property Ltd trading as Pedder for themselves and for the vendor/landlord of this property whose agents they are, give notice that (1) these particulars do not constitute any part of an offer or contract, (2) all statements contained within these particulars are made without responsibility on the part of Pedder or the vendor/landlord, (3) whilst made in good faith, none of the statements contained within these particulars are to be relied upon as a statement of representation or fact, (4) any intending purchaser/tenant must satisfy him/herself by inspection or otherwise as to the correctness of each of the statements contained within these particulars, (5) the vendor/landlord does not make or give either Pedder or any person in their employment any authority to make or give representation or warranty whatsoever in relation to this property.