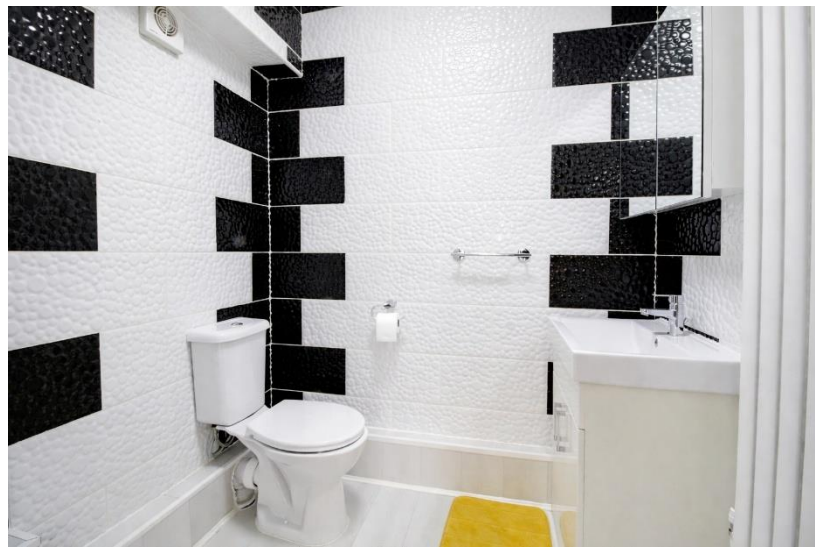




## Hadley Road, Enfield

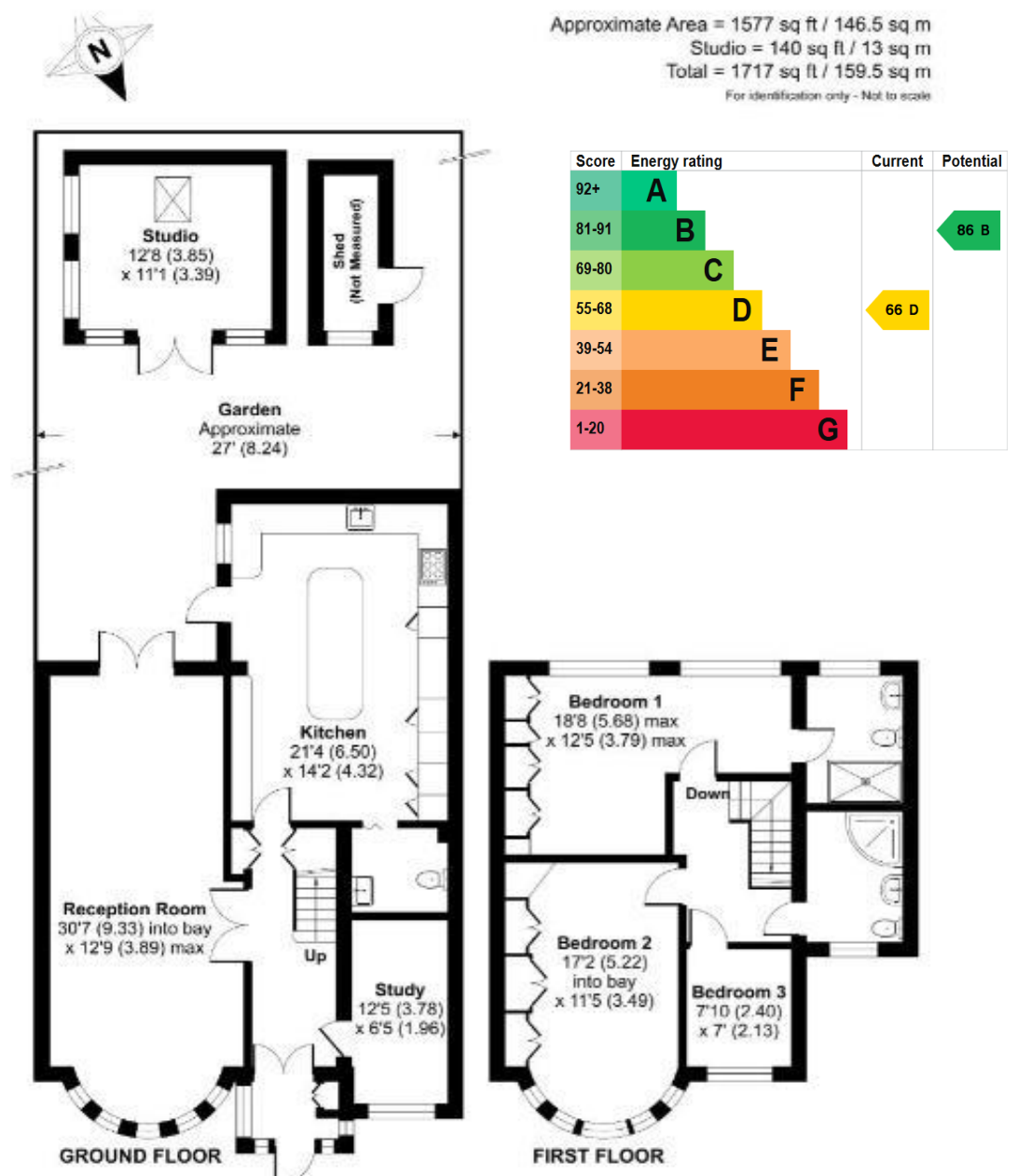


- WELL PRESENTED THREE BEDROOM SEMI-DETACHED HOME
- IMPRESSIVE OPEN-PLAN KITCHEN / DINING ROOM WITH ISLAND
- SEPARATE STUDY IDEAL FOR HOME WORKING
- LOW MAINTENANCE REAR GARDEN WITH DETACHED STUDIO / GYM AND SHED
- THREE GOOD-SIZE FIRST FLOOR BEDROOMS AND FAMILY BATHROOM
- GENEROUS DRIVEWAY PROVIDING AMPLE OFF-STREET PARKING
- EN-SUITE SHOWER TO MASTER BEDROOM

# Hadley Road

Enfield EN2 8JS

Situated on the ever-popular Hadley Road in Enfield, this well-presented three-bedroom semi-detached home offers generous living accommodation, a versatile layout and modern finishes throughout. Having been extended, the property provides an excellent balance of family, entertaining and work from home space, together with a sizeable driveway offering off-street parking. The ground floor features a bright front reception room with bay window, a spacious open-plan kitchen/dining room with island and direct access to the rear garden, a separate study ideal for home working, and a ground floor WC. Upstairs, there are three well-proportioned bedrooms with the master bedroom having an en-suite shower room and a separate family bathroom. The rear garden has been designed with low maintenance in mind and further benefits from a detached studio, currently used as a home gym and storage space, as well as a separate shed. Hadley Road is a sought-after residential turning conveniently located for Enfield Town, with its wide range of shops, cafes, restaurants and everyday amenities. Excellent transport links are close by, including Gordon Hill and Enfield Chase stations, both offering direct services into central London. The area is also well regarded for its schools including the highly regarded Wren Academy which is walking distance. A superb opportunity to acquire a spacious and flexible home in one of Enfield's most desirable locations.



Floor plan produced in accordance with RICS Property Measurement 2nd Edition, incorporating International Property Measurement Standards (IPMS Residential). ©iProbecom 2025. Produced for Kingsly Estate Agents, Southgate REF: 1378845