



Border Road, London

Guide Price £350,000



Property Summary

GUIDE PRICE £350,000 - £375,000

Propertyworld is delighted to present this CHAIN FREE & stunning one-bedroom period conversion, boasting a SHARE OF FREEHOLD and a PRIVATE COURTYARD GARDEN. Beautifully presented and lovingly maintained, the property is located in the highly sought-after Lawrie Park Triangle. BORDER ROAD - arguably the best road this side of Dulwich - a tree lined, and super tranquil residential road, only five mins from Crystal Palace Park. With privet hedges and white picket fences, it has the look and feel of a quintessential English Village, but lies minutes away from an array of shops, services and handy transport options. Its beautiful and incredibly rare.

With the added benefits of a private entrance, on-road parking, and a delightful courtyard garden, this home is a rare find. Upon entering, you are welcomed into a spacious, well-appointed kitchen, featuring an extensive range of wall and base units, reclaimed oak flooring, tiled splashback, integrated appliances, and a striking vertical lacquered raw metal radiator. The living room is the heart of the home, bathed in natural light, with elegant patio doors leading to the courtyard. The room is finished with neutral decors, ceilings & reclaimed wood flooring. The courtyard garden is a serene retreat, perfect for outdoor dining and relaxation, complete with a table, chairs, storage cupboard, and plants. Before reaching the bathroom, you'll find a cleverly designed storage space. The bathroom itself is a stylish and luxurious space, featuring a double-ended bath, overhead shower, two-piece suite, and full tiling throughout. The bedroom is peaceful and beautifully presented space, with lovely views of the courtyard and clever storage options.

Additional features include a SHARE OF FREEHOLD, access to a large communal front patio/garden, and more. This exceptional flat is an ideal first-time buy. Call Propertyworld on 0208 488 0011 to view.

Sydenham Sales

020 8488 0011

www.propertyworlduk.net

Property Summary

- One bedroom flat
- Period conversion
- CHAIN FREE
- SHARE OF FREEHOLD
- Stunning interior
- Fabulous location
- COURTYARD GARDEN
- Ideal first time buy
- Private entrance
- EPC is C / Council tax is B

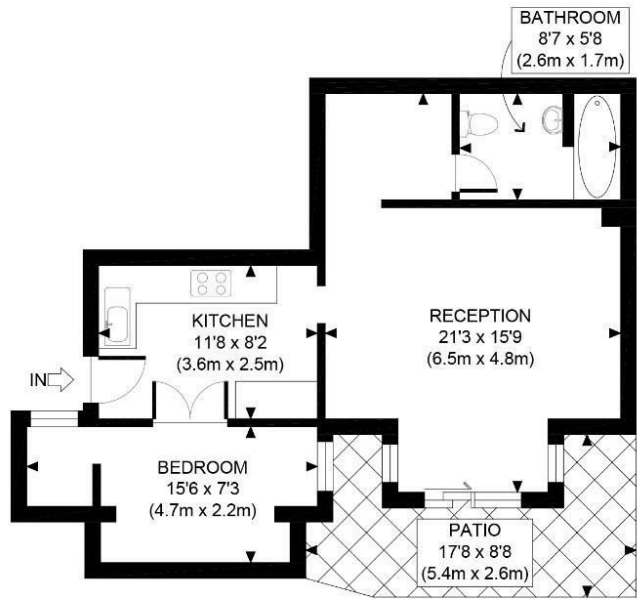
Our Vendor Loves...

Our Vendor Loves...

"What we've enjoyed most about living here is how quiet and peaceful it feels. The flat has a lot of character and a unique vibe, making it a lovely place to relax and work from. Being less than five minutes from Crystal Palace Park has been a highlight – it's our favourite park in London, with its beautiful space, fantastic weekend food market, and new improvements. Despite feeling very tucked away, it's really close to transport links, Crystal Palace Triangle, and Sydenham".



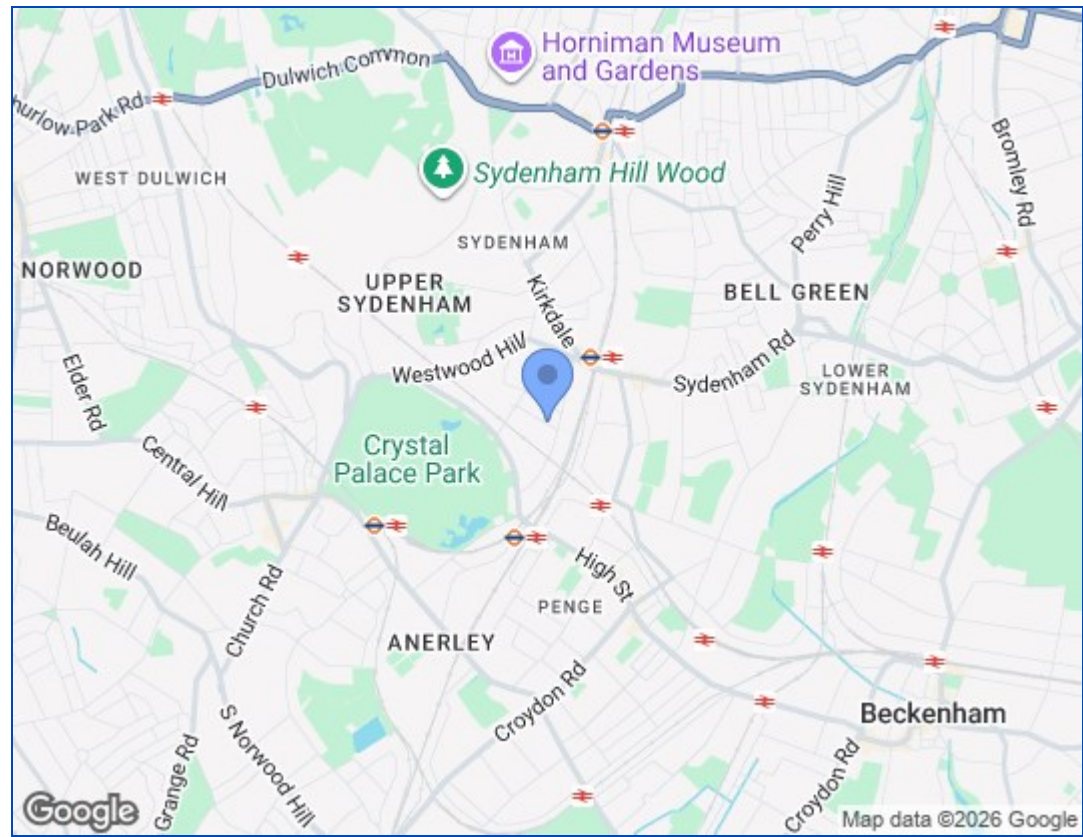




GROUND FLOOR
GROSS INTERNAL
FLOOR AREA 504 SQ FT



APPROX. GROSS INTERNAL FLOOR AREA 504 SQ FT / 47 SQM	Border Road
Disclaimer: Floor plan measurements are approximate and are for illustrative purposes only. While we do not doubt the floor plan accuracy and completeness, you or your advisors should conduct a careful, independent investigation of the property in respect of monetary valuation	date 03/06/26
	photoplan



Energy Efficiency Rating		Current	Potential
Very energy efficient - lower running costs			
(92 plus) A			
(81-91) B			
(69-80) C		72	82
(55-68) D			
(39-54) E			
(21-38) F			
(1-20) G			
Not energy efficient - higher running costs			
England & Wales		EU Directive 2002/91/EC	

These particulars, whilst believed to be accurate are set out as a general outline only for guidance and do not constitute any part of an offer or contract. Intending purchasers should not rely on them as statements of representation of fact, but must satisfy themselves by inspection or otherwise as to their accuracy. No person in this firm's employment has the authority to make or give any representation or warranty in respect of the property.

Sydenham Sales
020 8488 0011
www.propertyworlduk.net

