



andrew nunn
ASSOCIATES

PER MONTH

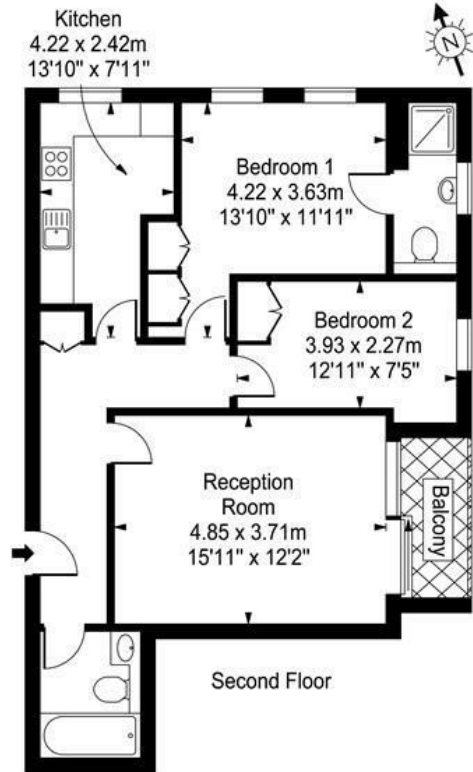
£2,350 Per Month

The Windmill

London, W4 1PD

The Windmill

Approx. Gross Internal Area
69.45 Sq M - 748 Sq Ft



Every attempt is made to assure accuracy, however measurements are approximate and for illustrative purposes only. Not to scale.
Floor plan by www.frameworkphotos.co.uk



Energy Efficiency Rating		Current	Potential
Very energy efficient - lower running costs			
(92 plus)	A		
(81-91)	B		
(69-80)	C		
(55-68)	D		
(39-54)	E		
(21-38)	F		
(1-20)	G		
Not energy efficient - higher running costs			
England & Wales		80	80
		EU Directive 2002/91/EC	

Agents Note: Whilst every care has been taken to prepare these particulars, they are for guidance purposes only. All measurements are approximate and are for general guidance purposes only and whilst every care has been taken to ensure their accuracy, they should not be relied upon and potential buyers/tenants are advised to recheck the measurements



OFFICE ADDRESS
The Clock House
66 South Parade
Chiswick
London

OFFICE DETAILS
020 8995 1600
lettings@andrewnunnassociates.co.uk
andrewnunnassociates.co.uk