

**Clifton Park Avenue
Raynes Park, SW20 8BD**

£850,000 Freehold



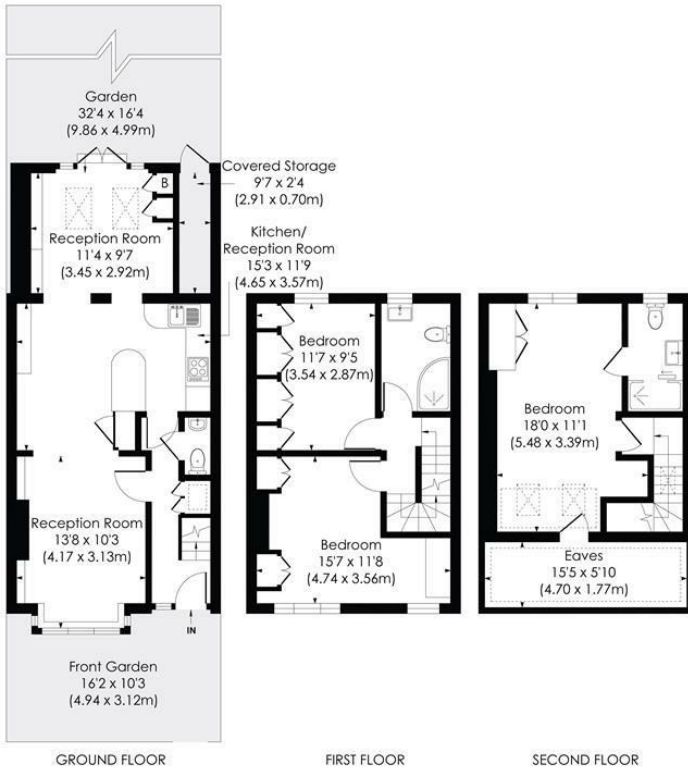
A charming three-bedroom, fully extended period terrace, ideally located on a sought-after tree-lined road just a short walk from Raynes Park station and high street. The property offers spacious open-plan living, combining attractive features with family living, and benefits from a pleasant secluded garden with a patio, making it an ideal home for commuters and families alike.

CLIFTON PARK AVENUE, SW20

Approx. Gross Internal Floor Area

1218 Sq. ft/113.19 Sq. m (Incl. RHH)

1089 Sq. ft/101.18 Sq. m (Excl. RHH)

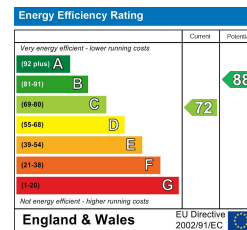


© Pixangle Property Marketing Ltd. info@pixangle.com Tel: 0208 870 2118



This floor plan has been prepared for the purpose of illustration only in accordance with the latest RICS code of measuring practice and is not to scale. All measurements and areas are approximate and whilst every effort has been made to ensure the accuracy of the plan contained here, no responsibility is taken for any error, omission or misstatement.

- Three Double Bedrooms
- Fully Extended
- Two Bathrooms
- Open Plan Kitchen/Dining/Living
- Ground Floor W.C
- Close To Local Shops & Amenities
- Close To Raynes Park Station
- Garden & Patio
- EPC - C
- Council Tax Band - D



For Free Mortgage Quote and Best Mortgage Rates, call Ellisons Mortgage Advisor on 0208 944 9595



Although these particulars are believed to be correct, their accuracy is not guaranteed and they do not form part of any contract.

Celebrating 30 years of successful Sales and Lettings in Merton

