



Chiswick Staithe, London, W4
Guide Price £950,000

WHITMAN & CO.
SALES · LETTINGS · COMMERCIAL



A spacious and light four-storey townhouse located within the award-winning Chiswick Staithe riverside development in the Grove Park area of Chiswick. The house offers an excellent balance of living and entertaining space with the accommodation comprising a fabulous 28'3x16' dual aspect first-floor reception room, a ground floor dining/reception room with doors onto the garden, a separate fitted kitchen with breakfast area, a huge top floor bedroom suite with ensuite bathroom and fitted wardrobes, two further double bedrooms (one which could be split to create an additional bedroom), a family bathroom, and a large loft. The house has a private south-west facing garden which leads directly onto extensive communal gardens that front the river. There is a separate garage which provides excellent additional storage and residents' parking within the development. Whilst requiring a degree of modernising, the house benefits from a new roof, a recently installed boiler and replacement windows throughout. Chiswick Staithe is well located for Dukes Meadows playing fields, Chiswick House and Grounds and local shops and pubs. Transport links include Chiswick mainline station (10-minute walk), local bus routes and the A4/M4 for routes in and out of London.



Chiswick Staithe, W4

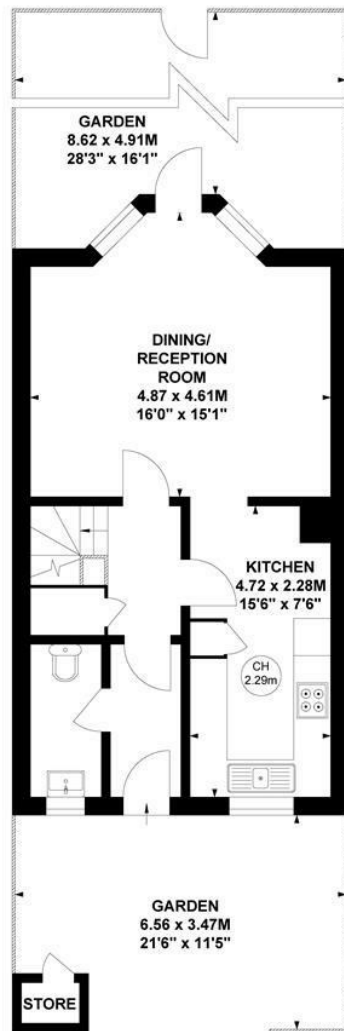
Approximate Gross Internal Area

181.86 sq m / 1957 sq ft
(Including Garage)

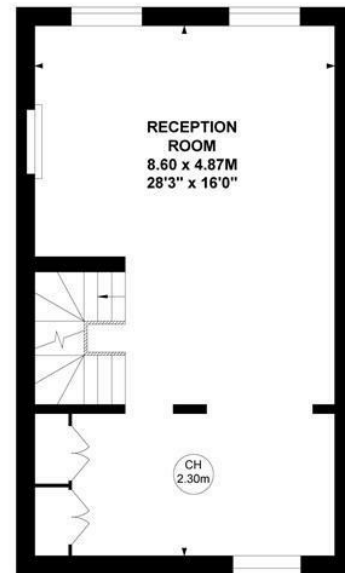
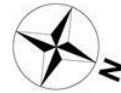
Garage

14.90 sq m / 160 sq ft

Key :
CH - Ceiling Height



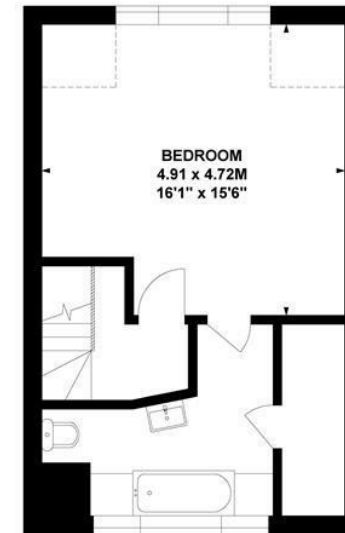
Ground Floor



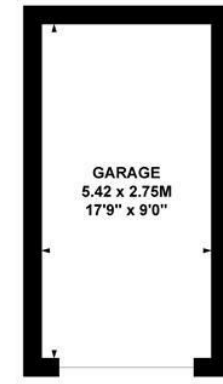
First Floor



Second Floor



Third Floor



(Not Shown In Actual Location/Orientation)

Not to scale, for guidance only and must not be relied upon as a statement of fact.
All measurements and areas are approximate only

- Spacious and light four-storey townhouse
- Separate garage
- Popular riverside development

- Private garden with additional communal riverside gardens
- Excellent balance of living and entertaining space
- No onward chain

Tenure - Freehold
Service charge - £1400 pa
Local authority - Hounslow
Council Tax - Band G

