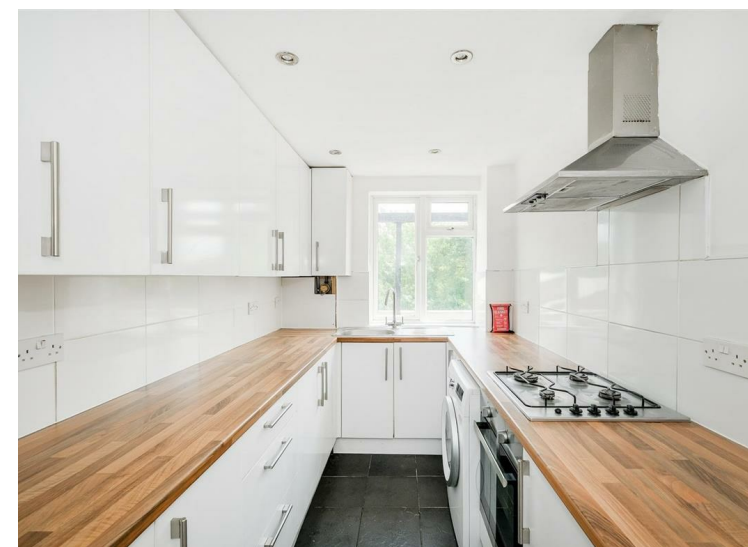




Brooklyn Court, Loughton, IG10 1AQ
 £1,600 Per Month

Council: Epping Forest | Council Tax Band: C | Floor Area: sq ft

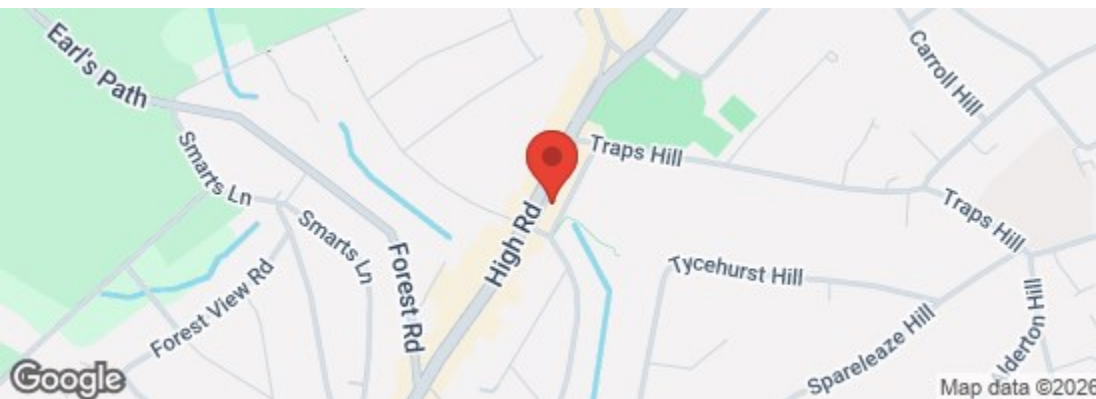
Bedrooms: 2 | Reception Rooms: 1 | Bathrooms: 1



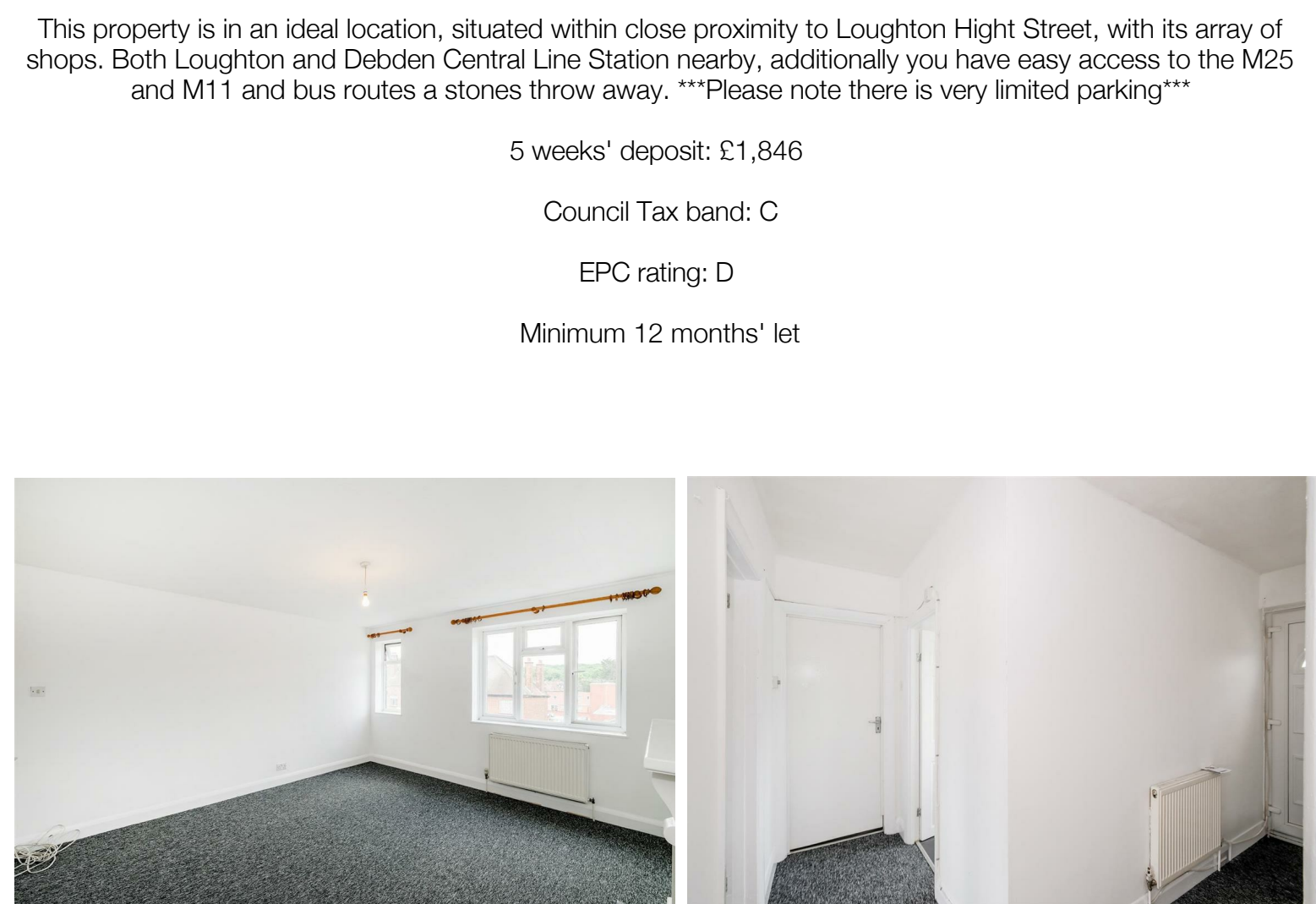
Request a Viewing: **0208 504 2222** Email: **buckhursthill@wearechurchills.co.uk**



Energy Efficiency Rating		Current	Potential
Very energy efficient - lower running costs			
(92 plus) A			
(81-91) B			
(69-80) C			
(55-68) D			
(39-54) E		54	65
(21-38) F			
(1-20) G			
Not energy efficient - higher running costs			
England & Wales		EU Directive 2002/91/EC	



The Agent has not tested any apparatus, equipment, fixtures and fittings or services and so cannot verify that they are in working order or fit for the purpose. A buyer is advised to obtain verification from their solicitor or surveyor. References to the tenure of a property are based on information supplied by the seller. The agent has not had the sight of the title documents. A buyer is advised to obtain verification from their solicitors.



This property is in an ideal location, situated within close proximity to Loughton Hight Street, with its array of shops. Both Loughton and Debden Central Line Station nearby, additionally you have easy access to the M25 and M11 and bus routes a stones throw away. ***Please note there is very limited parking***

5 weeks' deposit: £1,846
Council Tax band: C
EPC rating: D
Minimum 12 months' let