



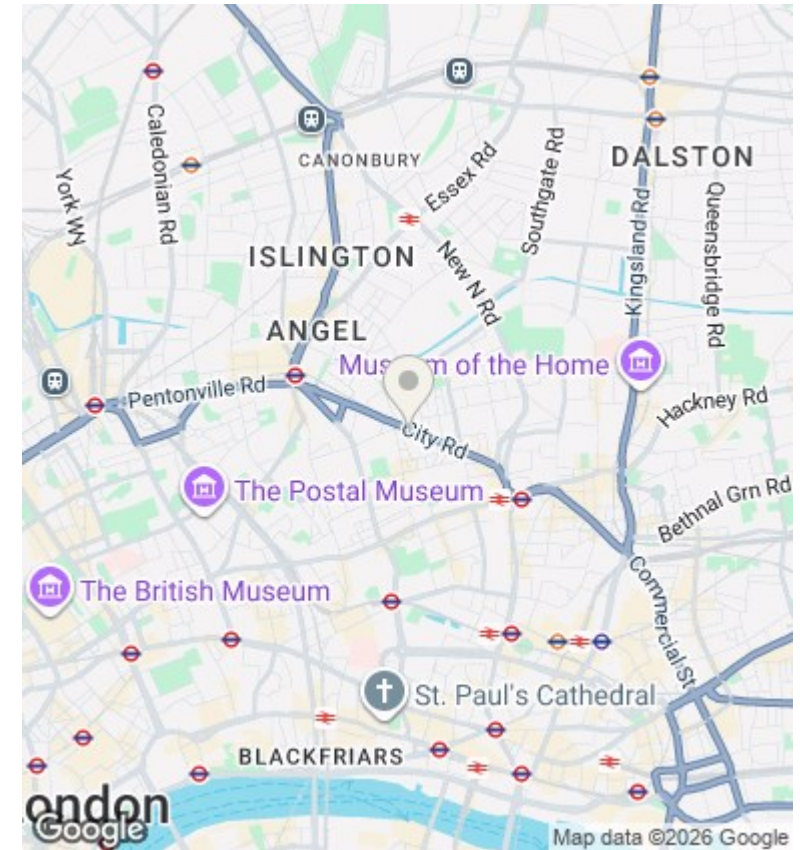
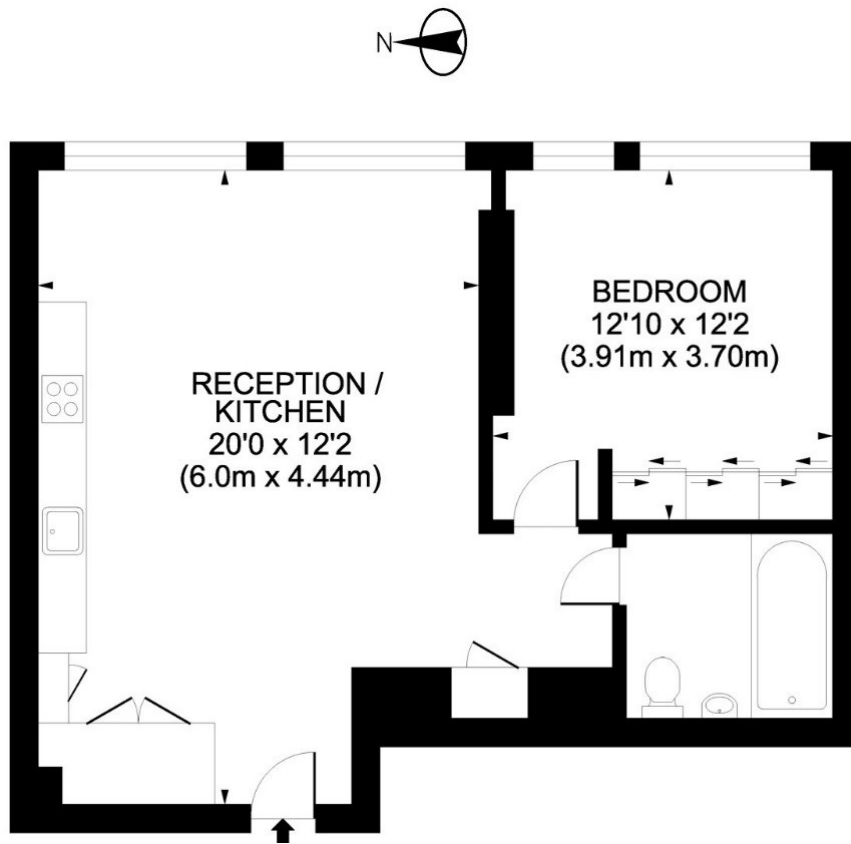
## Chronicle Tower, 261B City Road, London, EC1V EC1V 1AJ

£3,000 Per Month

- 24 Hour Concierge
- Central Convenience
- Stylish Premium Finishes
- Vibrant Lifestyle Experience

- Modern Urban Elegance
- Spacious Contemporary Design
- Tranquil Urban Retreat

- Intelligent Living Solutions
- Expansive Panoramic Windows
- Residents Health Club



### Viewings

Viewings by arrangement only.  
Call 02077225022 to make an appointment.

### Council Tax Band

E

### EPC Rating:

B

Energy Efficiency Rating		
	Current	Potential
<i>Very energy efficient - lower running costs</i>		
(92 plus) <b>A</b>		
(81-91) <b>B</b>	82	82
(69-80) <b>C</b>		
(55-68) <b>D</b>		
(39-54) <b>E</b>		
(21-38) <b>F</b>		
(1-20) <b>G</b>		
<i>Not energy efficient - higher running costs</i>		
<b>England &amp; Wales</b>	EU Directive 2002/91/EC	