



Kara Lodge 3, Newton Grove, W4
Guide Price £750,000

WHITMAN & CO.
SALES · LETTINGS · COMMERCIAL



A fabulous apartment forming part of this historic Grade II listed building located on this premier residential road in the Bedford Park conservation area benefiting from excellent lateral space and an abundance of light. The property is well presented throughout with the accommodation comprising an incredible 19'11x18'1 dual aspect reception room with views over the communal garden and 3.18m high ceilings, two double bedrooms with fitted wardrobes, a fitted kitchen, a bathroom, a private entrance and stunning communal west facing garden. Kara Lodge is situated on Newton Grove, which is a premier road in the Bedford Park Conservation Area, and is located within a short walk of Turnham Green station, local parks and the extensive shopping, cafe and restaurant facilities on Chiswick High Road and Turnham Green Terrace. No onward chain.

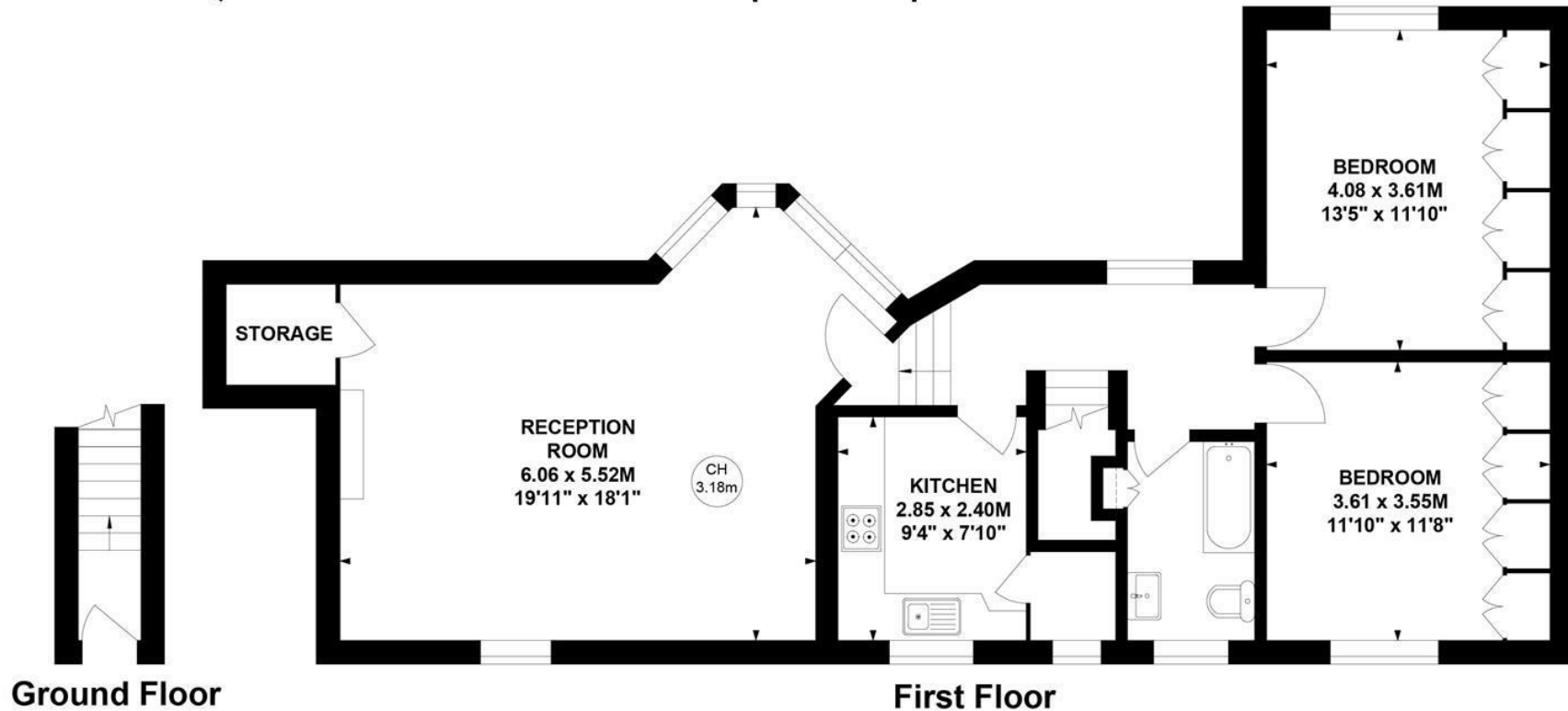




Kara Lodge, W4

Approximate Gross Internal Area
86.91 sq m / 935 sq ft

Key :
CH - Ceiling Height



Not to scale, for guidance only and must not be relied upon as a statement of fact.
All measurements and areas are approximate only

- Fabulous first floor apartment
- Large west facing communal garden
- Premier residential road

- 19'11x18'1 Dual aspect reception room with 3.18m high ceilings
- Two double bedrooms
- No onward chain

Tenure - Leasehold
Lease Length - 137 Years remaining
Ground rent - £150 pa
Service Charge - £1200 pa
Local Authority - Ealing
Council Tax - Band E

