



Pant Onnen, Chepstow Road  
Llangwm, Usk, Monmouthshire, NP15 1HH



# Pant Onnen, Chepstow Rd, Llangwm, Usk, Monmouthshire, NP15 1HH

- Exceptional five-bedroom eco-conscious home constructed in 2009 with solar panels, air source heat pump & underfloor heating
- Bespoke solid oak kitchen with Rayburn & Utility room
- Elegant lounge with feature fireplace, wood-burning stove and conservatory
- Dining room, ground floor shower room & first floor bedroom / study
- Flexible accommodation with multiple reception rooms offering multi generational living potential
- Principal suite with shower room
- Three / Four further generous double bedrooms served by a family bathroom
- Landscaped gardens, paddock, stables, double garage
- Edge of village location and stunning panoramic countryside views

**Guide Price**  
**£799,950**

Unit 6 Manor Way, Library Place, Chepstow,  
Monmouthshire, NP16 5HZ  
chepstow@david-james.co.uk  
Tel 01291 626775  
www.david-james.co.uk

## Description

Offered to the market for the very first time since its construction in 2009, Pant Onnen is an outstanding country residence set within extensive grounds, offering a truly captivating and highly individual rural landscape.

This distinctive detached home has been thoughtfully designed to combine contemporary luxury with eco-conscious living, resulting in a property of exceptional quality, character and efficiency. Set within beautifully landscaped gardens and grounds, the residence enjoys far-reaching, uninterrupted countryside views and offers a rare lifestyle opportunity.

The grounds themselves are a defining feature, a carefully curated blend of productive gardens and versatile outdoor spaces and outbuildings creating a tranquil yet highly functional environment. Whether for family life, equestrian pursuits, small holding, home working or multi-generational living, Pant Onnen provides an adaptable and inspiring setting.

Internally, the accommodation is both generous and refined, with the potential to create an annexe if so desired, finished with high-quality materials, including elegant oak detailing throughout. The home has been designed with comfort and longevity in mind, incorporating underfloor heating across two floors alongside extensive solar infrastructure, ensuring an energy-efficient and sustainable living environment without compromise on luxury. Pant Onnen represents a seamless fusion of modern design, environmental sensitivity and countryside charm, a truly special home offering privacy, versatility and an exceptional quality of life.

## Situation

The village of Llangwm is approximately 4 miles from the popular market town of Usk which offers shopping and primary school facilities. The A449 is just under 3 miles away which provides easy access north to Monmouth and south to Newport; both 16 miles distance and the regional centres of Cardiff and Bristol are each within a 40 minute drive with fast London trains from Newport or Bristol Parkway.

## Ground Floor Accommodation

Enter via a solid oak porch complete with bespoke stained glass panel depicting local wildlife & landscape, into the welcoming reception hall immediately establishing the home's quality and craftsmanship, featuring engineered oak flooring and access to the principal reception areas, cloakroom with WC & vanity wash handbasin, along with useful understairs storage and an oak staircase leading to the first floor.

The heart of the home is the beautifully appointed bespoke solid oak kitchen, designed with both style and practicality in

mind. High-quality integrated appliances include a microwave, oven and dishwasher, complemented by sink with mixer tap, filtered cold water and boiling water tap. A traditional Rayburn solid fuel cooker provides both character and functionality, suitable for wood or coal and ideal for country-style cooking. Adjoining the kitchen is a highly practical utility room with additional freezer capacity, washing machine and tumble dryer space and manifold access for the ground floor underfloor heating system. The ground floor is insulated over a beam and block flooring system.

The spacious lounge offers an elegant yet comfortable living environment, centred around a feature fireplace with a solid mahogany mantle and wood-burning stove. French doors open seamlessly into the conservatory, where marble flooring and electric radiators create a bright all-season entertaining space with direct access onto the patio and gardens beyond.

A doorway leads from the lounge through to an inner hallway with contemporary ground floor shower room with an electric towel radiator, comprising shower cubicle, WC & vanity wash hand basin. A separate dining room benefits from engineered wood flooring with two electric radiators, exposed stone walling and an understairs drinks cabinet and space for drinks fridge, ideal for both formal entertaining and family gatherings, with French doors leading to the rear patio, creating a seamless connection between the interior living spaces and the outdoor environment. A staircase leads to an additional versatile reception room heated by an electric radiator, currently used as a music room, however, provides flexibility for home working, study, snug or guest accommodation. This area of the property lends itself to guest accommodation or annexe for multi-generational living.

## First Floor Accommodation

The first-floor landing leads to three well-proportioned bedrooms, each enjoying attractive outlooks and excellent natural light, with underfloor heating and countryside views. Bedroom Four is currently used as a study and provides access to manifold for first floor underfloor heating system. The family bathroom is fitted with a bath, separate shower enclosure, WC and wash hand basin, refitted in 2026. A further staircase leads to the principal suite with vaulted ceiling, built in wardrobes and dual aspect Velux windows maximising the far-reaching countryside views. The suite is heated by two thermostatically controlled radiators heated by the hot water system. Adjacent is a shower room, heated by an electric towel radiator, refitted in 2026 to provide shower cubicle, WC, wash hand basin and a walk in cupboard housing the solar panel controls and batteries.

## Outside

The property is set in approximately 1.24 acres and is approached via an open parking area, with a gateway leading to an enclosed parking area and in turn to the detached double garage with twin doors & side pedestrian door, internally set up as a garage and workshop with a staircase leading to the first floor rooms, perfect for home working, hobbies or conversion to annexe subject to the necessary planning consents.

The well established gardens, patio areas and hot tub provide multiple spaces for entertaining, dining and relaxation while taking full advantage of the surrounding countryside views. With an attractive stone pond and waterfall, log & coal storage, summerhouse, large storage shed/workshop with power & lighting, green house and vegetable garden.

A gateway leads through to the enclosed wildlife garden, formerly a pony paddock, with wooden stable block providing two loose boxes, with power & water, there is also vehicular access from the road into the paddock.

## Agents Note

The property benefits from:

12 owned solar panels

Battery storage system with grid feedback

Advanced PV cell infrastructure

Efficient underfloor heating system throughout except in recently added extension (potential annex area)

Excellent thermal performance and natural insulation

Rainwater harvesting system.

These features combine to create a highly efficient home with reduced running costs while maintaining exceptional year-round comfort.

## Tenure

We are informed the property is Freehold. Intended purchasers should make their own enquiries via their solicitor.

## Services

Mains electric and water.

Solar Panels with battery storage

Heating via Air Source Heat Pump installed in 2025

Private Drainage via Digester system, further details available on request

EPC Rating: B

## Local Authority

Monmouthshire County Council

Council tax band: F

## Viewing

Strictly by appointment with the Agents:

David James, Chepstow



Score	Energy rating	Current	Potential
92+	A		
81-91	B	85 B	85 B
69-80	C		
55-68	D		
39-54	E		
21-38	F		
1-20	G		

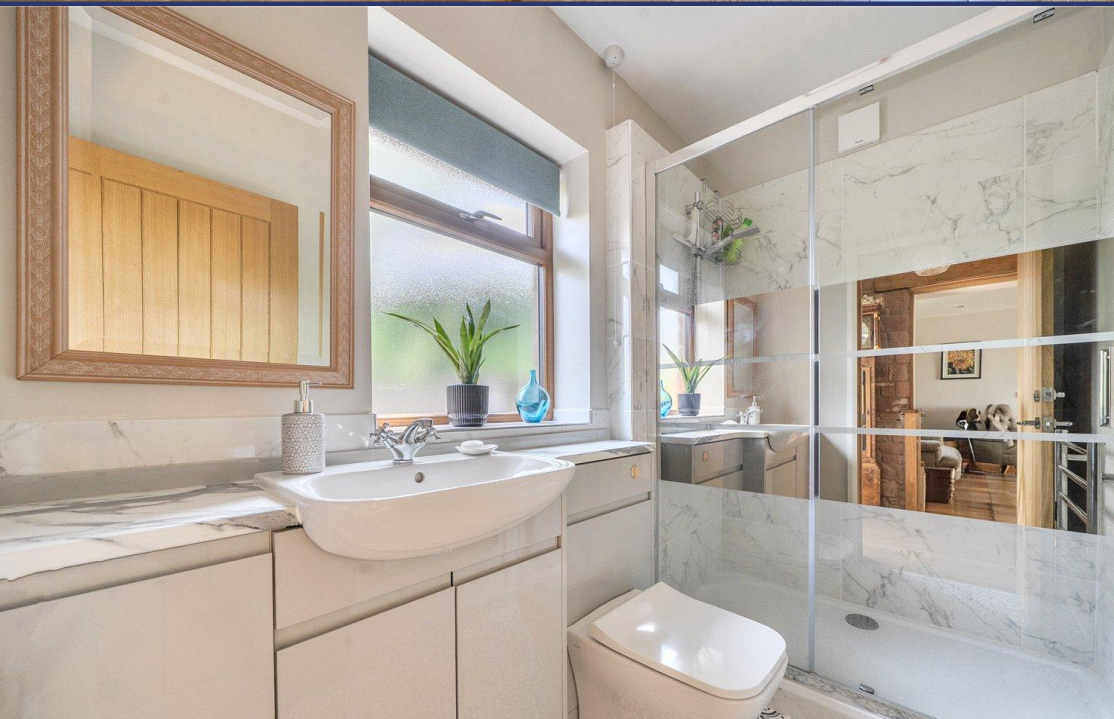
## PLANS AND PARTICULARS

The sale plan has been prepared from the OS Map with the sanction of HMSO and has been amended as necessary for the purpose of this sale. Crown Copyright Reserved. Licence No. 100003612. Both plan and particulars are believed to be correct but they do not constitute any part of any offer or contract and any intending purchaser must satisfy himself by inspection or otherwise, as to the correctness of each of the statements contained in these particulars as all such statements are made without responsibility on the part of David James or the vendor or his solicitor.

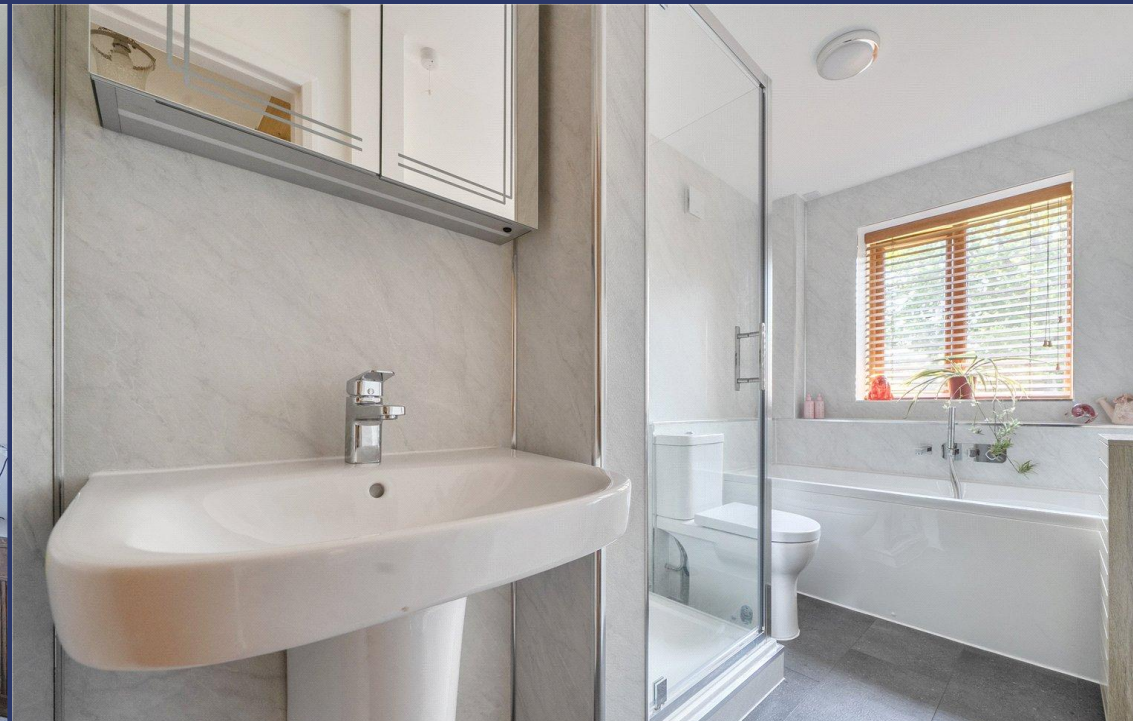
## WAYLEAVES, RIGHTS OF WAY, EASEMENTS, ETC

The property is sold subject to all rights including rights of way whether public or private, light, support, drainage, water and electricity supplies and other rights, covenants, agreements and all existing and proposed wayleaves, masts, pylons, stays, cables, drains and water, gas or other pipes whether referred to in these particulars or not and to the provisions of any planning scheme of the County or Local Authorities.



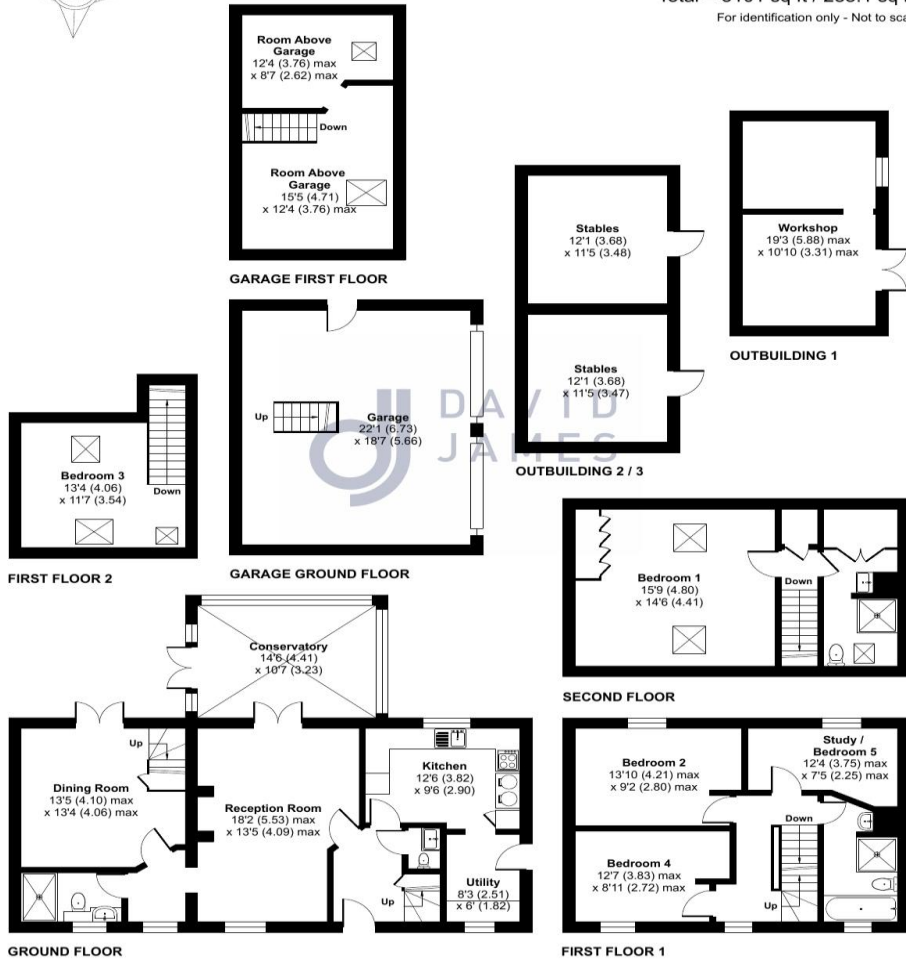






**Pant Onnen, Chepstow Road, Llangwm, Usk, NP15**

Approximate Area = 1936 sq ft / 179.8 sq m  
 Garage = 682 sq ft / 63.4 sq m  
 Outbuildings = 483 sq ft / 44.9 sq m  
 Total = 3101 sq ft / 288.1 sq m  
 For identification only - Not to scale



Floor plan produced in accordance with RICS Property Measurement 2nd Edition, Incorporating International Property Measurement Standards (IPMS2 Residential). © nrichcom 2026. Produced for David James. REF: 1466174