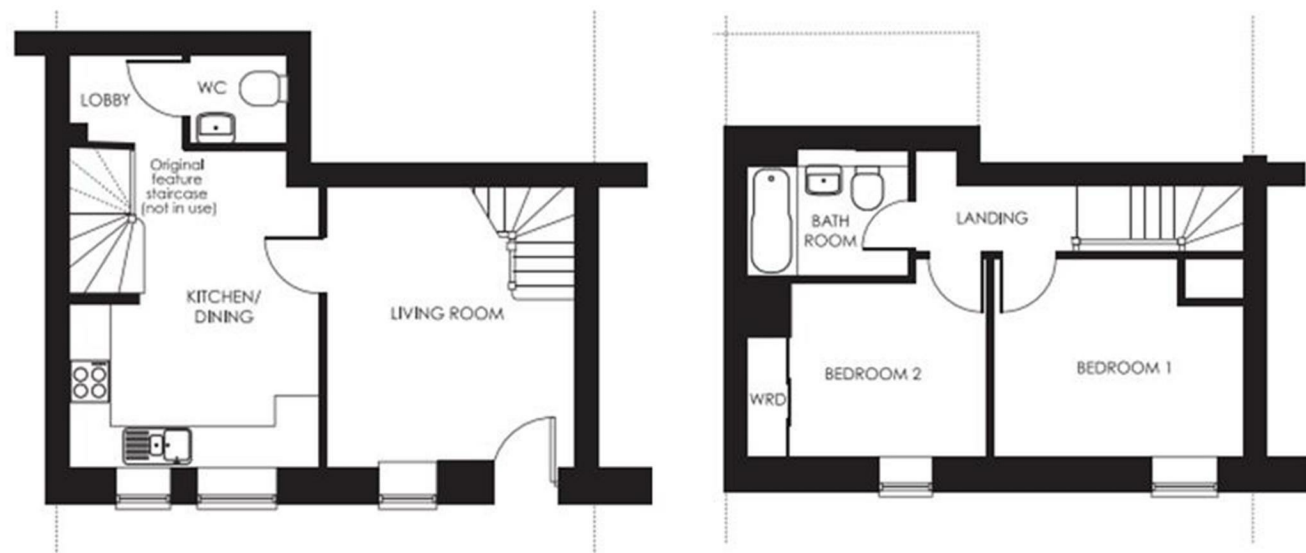


FOR SALE



Plot 3 - Whitehall Gardens, Monkmoor Road, Shrewsbury, SY2 5AP



FOR SALE

Price Guide £337,500

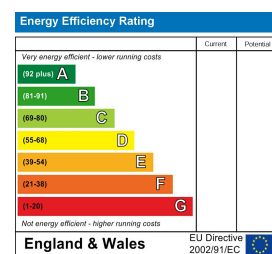
Plot 3 - Whitehall Gardens, Monkmoor Road, Shrewsbury, SY2 5AP

A beautifully appointed and sympathetically restored character cottage, providing a generous open plan living environment, set with two allocated parking spaces on this exclusive gated development.

**Property to sell?** We would be delighted to provide you with a free no obligation market assessment of your existing property. Please contact your local Halls office to make an appointment. **Mortgage/financial advice.** We are able to recommend a completely independent financial advisor,

who is authorised and regulated by the FCA. Details can be provided upon request. **Do you require a surveyor?** We are able to recommend a completely independent chartered surveyor. Details can be provided upon request.

Energy Performance Rating



01743 236444

Shrewsbury Sales  
2 Barker Street, Shrewsbury, Shropshire, SY1 1QJ  
E: shrewsbury@hallsgb.com



IMPORTANT NOTICE. Halls Holdings Ltd and any joint agents for themselves, and for the Vendor of the property whose Agents they are, give notice that: (i) These particulars are produced in good faith, are set out as a general guide only and do not constitute any part of a contract (ii) No person in the employment of or any agent of or consultant to Halls Holdings has any authority to make or give any representation or warranty whatsoever in relation to this property (iii) Measurements, areas and distances are approximate, Floor plans and photographs are for guidance purposes only (photographs are taken with a wide angled / zoom lenses) and dimensions shapes and precise locations may differ (iv) It must not be assumed that the property has all the required planning or building regulation consents. Halls Holdings, Bowmen Way, Shrewsbury, Shropshire SY4 3DR. Registered in England 06597073.



1 Reception Room/s



2 Bedroom/s



1 Bath/Shower Room/s

- 10-year warranty with Build Warranty
- All homes are sold freehold
- Electric car charging point
- Two allocated parking spaces
- Convenient and sought after location
- 815 sq ft

**DIRECTIONS**

From Shrewsbury town centre, proceed down Wyle Cop and over the English Bridge, staying in the left hand lane. Proceed past The Abbey and at the traffic lights turn left onto Monkmoor Road. Continue along Monkmoor Road and Whitehall Gardens will be found after a short distance on the right hand side.

**SITUATION**

The property is delightfully positioned in a most sought after location being in a conservation area and within a short distance of the excellent range of town centre amenities which include a wide variety of shops, restaurants and social facilities. The property is positioned within walking distance of the Quarry Park which has some delightful walks along the banks of the River Severn. Shrewsbury provides excellent schooling including both state and private whilst the town centre also offers a rail service. Commuters will be delighted to note that there is excellent road access to the A5 which leads to the M54 motorway and West Midlands beyond.

**THE DEVELOPMENT**

Whitehall Gardens is an exquisite gated development, featuring seven bespoke one and two bedroom conversions, as well as eighteen two, three and four bedroom new build homes. Whitehall Gardens is set on the most beautiful historic site within the gardens of Whitehall Mansions. Situated by the beautiful 16th Century Dove Cote, the new build homes have been designed with the historic and traditional features in mind. Completely unique to Whitehall Gardens, the homes come with a high-specification as standard.

**THE DEVELOPER**

Shropshire Homes is an award winning housebuilder, developing homes of quality and character for over forty-four years. From initial concept to design and creation, Shropshire Homes have an experienced in-house team to create beautiful properties in Shropshire and surrounding areas.

**DESCRIPTION**

3 Dovecote Gardens is a charming two-bedroom cottage, boasting unique original features. The ground floor offers a generous open plan living and dining area, a spacious kitchen, a convenient WC, and a hall.

The kitchen and dining room is a real showstopper, retaining the original staircase as a feature complemented by timber framed walls and a remarkable authentic timber beam running across the ceiling. The living room benefits from a historic beam running across the centre of the ceiling and timber framed walls exposed on the largest wall to the left-hand side of the room.

Upstairs to the first floor, the landing leads to a well-appointed family bathroom and two generously sized bedrooms. Bedroom one features a vaulted ceiling with beautiful roof trusses and exposed timber beams on the wall.

This cosy home blends comfort and practicality, making it ideal for relaxed living. The layout provides both functionality and warmth, with ample space for family or guests. Perfect for those seeking character and comfort in a beautifully presented cottage setting.

Plot 3 also comes with parking for two cars.

**KEY FEATURES**

- A choice of quartz kitchen worktops with undermounted sink \*
- Lifestyle range of kitchen units to choose from\*
- Stainless steel extractor hood with quartz splash back
- Hotpoint washer dryer
- Hotpoint dishwasher 45cm
- Hotpoint Fridge freezer 70/30
- Hotpoint hood 60cm with recirculating kit
- Hotpoint 60cm Gas hob
- Hotpoint multi-functional oven and gas hob
- Thermostatic rainfall shower in chrome to bathroom and en-suite
- Towel warmer and back-lit mirror in bathroom

**ACCOMMODATION****LIVING/DINING ROOM**

14'4" x 12'9"

**KITCHEN**

16'1" x 12'5"

**GUEST WC****FIRST FLOOR LANDING****BEDROOM ONE**

12'8" x 11'5"

**BEDROOM TWO**

12'11" x 8'1"

**BATHROOM****GENERAL REMARKS****FIXTURES AND FITTINGS**

Only those items described in these particulars are included in the sale.

**TENURE**

Freehold. Purchasers must confirm via their solicitor.

**SERVICES**

Mains water, electricity, gas and drainage are understood to be connected. None of these services have been tested.

**VIEWINGS**

By appointment through Halls, 2 Barker Street, Shrewsbury, SY1 1QJ.