

Unit 1, The Big Tree Farmhouse, Thornicombe, Blandford Forum,

The property comprises timber frames, profile steel cladding with concrete flooring, suspended lights and loading doors. There is foam insulation on the ceiling. The external yard area is concrete with a large secured gated entrance.



4988.00 sq ft

- Flexible Terms
- Parking
- Secured Entrance
- Rural Setting

£22,000 Per Annum

THE PROPERTY

The property comprises timber frames, profile steel cladding with concrete flooring, suspended lights and loading doors. There is foam insulation on the ceiling. The external yard area is concrete with a large secured gated entrance.

Unit 1 has the following approximate gross internal floor area: - 463 m² (4,988 ft²).

SITUATION

Unit 1 is part of 3 units that are all attached to each other and are located in a secure gated yard which is situated behind a hedge line and forms part of Sparrow Bush Farm in the small village of Thornicombe. The location enjoys views of surrounding countryside and has direct highway access.

OUTSIDE

You enter via a gated courtyard area which is laid to concrete, good for loading and unloading of goods and plenty of turning space.

DIRECTIONS

The property at Unit at Sparrow Bush Farm, Thornicombe is conveniently located just a short distance north of Blandford Forum, with easy access via the A350, one of the main arterial routes linking Blandford to Shaftesbury to the north and Poole to the south. From Blandford, the journey follows the A350 before turning onto the local Thornicombe road network, providing a simple and direct approach into the hamlet. Its position makes it well connected to wider Dorset, with the A354 giving routes toward Dorchester and Weymouth, and the A31 reachable within a short drive for onward travel toward Wimborne, Ringwood, and the M27 corridor. This combination of rural setting and proximity to major transport links ensures excellent accessibility for commercial use.

SERVICES

The services include mains water and electrics.

The water is part of the rental figure unless large amounts required then a separate discussion will need to be had. The electrics is paid on top of the rent

Unit 1 has toilet facilities which is connected to private drainage.

LOCAL AUTHORITY

Dorset Council Tel: 01305 251010

EPC

Energy Rating and Score is 59C

CODE FOR LEASING BUSINESS PREMISES

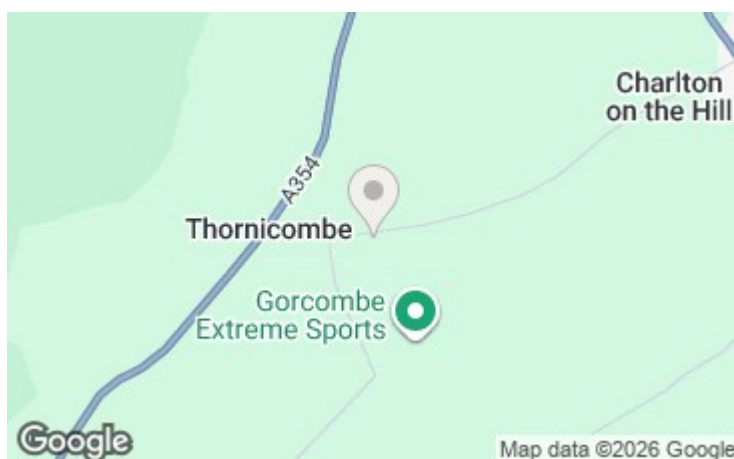
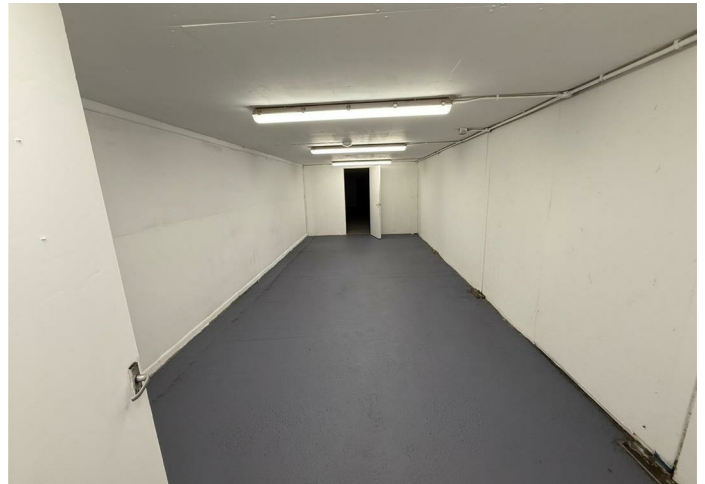
The Code for Leasing Business Premises in England and Wales strongly recommends you seek professional advice from a qualified surveyor, solicitor or licensed conveyancer before agreeing or signing a business tenancy agreement. The Code is available through professional institutions and trade associations or through the website:- www.leasingbusinesspremise.co.uk.

FINANCE ACT 1989

Unless otherwise stated, all prices and rents are quoted exclusive of Value Added Tax (V.A.T). Any intending purchasers or lessees should satisfy themselves independently as to VAT in respect of any transaction.

LEGAL COSTS

Each party to be responsible for their own legal costs incurred in the transaction.



01305 261008 ext 5

commercial@symondsandsampson.co.uk
Symonds & Sampson LLP
6 Burraton Yard, Burraton Square,
Dorchester, Dorset DT1 3GR



Important Notice: Symonds & Sampson LLP and their Clients give notice that: 1. They have no authority to make or give any representations or warranties in relation to the property. These particulars do not form part of any offer or contract and must not be relied upon as statements or representations of fact. 2. Any areas, measurements or distances are approximate. The text, photographs and plans are for guidance only and are not necessarily comprehensive. It should not be assumed that the properties have all necessary planning, building regulation or other consents and Symonds and Sampson LLP have not tested any services, equipment of facilities. 3. We have not made any investigation into the existence or otherwise of any issues concerning pollution of the land, air or water contamination and the purchaser is responsible for making his/her own enquiries in this regard. 4. The property is sold subject to and with the benefit of all existing wayleaves, easements and rights of way whether public or private, specifically mentioned or not. The vendors shall not be required to define any such rights, privileges or advantages.