



Highclere Street, SE26 | £625,000

02087029777

sydenham@pedderproperty.com

pedder
We live local



In General

- Beautiful Edwardian terrace
- Through reception
- Large square bay window with shutters
- Charming kitchen
- Two double bedrooms
- Beautifully refurbished bathroom
- Pretty landscaped garden
- Very close to Mayow Park
- Excellent transport links

In Detail

This charming Edwardian terrace is ideally positioned moments from the open green spaces of Mayow Park, excellent transport links, and a wide range of amenities along the high street.

Rich in character, the house is arranged over two floors and offers well balanced accommodation, finished in warm, muted tones that enhance its sense of light and calm throughout.

To the front, a welcoming through lounge features a large square bay window with shutters and attractive alcoves with fitted bookshelves flanking a beautiful cast iron fireplace. The dining area provides an excellent space for entertaining and everyday living, flowing seamlessly into the kitchen. The kitchen itself is a tasteful blend of charm and contemporary design, offering generous storage and ample wooden worktop space.

Upstairs, there are two well proportioned double bedrooms together with a beautifully refurbished family bathroom.

An additional highlight is the west-facing garden, perfectly positioned to enjoy sunshine throughout the day and into the evening. The landscaped garden offers a tranquil retreat that flows naturally from the kitchen, featuring a flagstone patio perfect for hosting outdoor dining. Steps lead up to a lovely lawn with established beds and border planting all perfectly framed by horizontal fencing.

Highclere Street is a welcoming residential road with a strong sense of community, ideally located close to Mayow Park and the Brown & Green café. A wide range of shopping facilities can be found at nearby Bell Green, while excellent transport links are available from Lower Sydenham (Charing Cross) and Sydenham Overground stations.


EPC: D | Council Tax Band: C



Floorplan

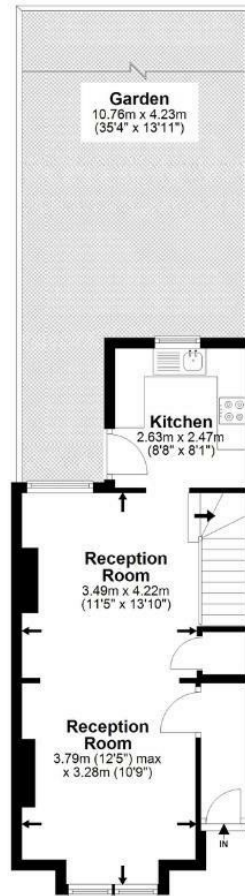
Highclere Street, SE26

Total* = 72.6 sq. m / 781.8 sq. ft
 Ground Floor = 36.0 sq. m / 387.6 sq. ft
 First Floor = 36.6 sq. m / 394.2 sq. ft

 = Reduced head room below 1.5m



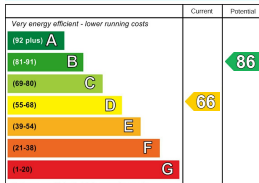

Ground Floor



First Floor



*All measurements are approximate and do not include eaves space. The plans are for representation purposes only as defined by RICS - 'Code of Measurement Practice'. The plans are not to scale. Please personally check all sizes, dimensions, shapes and compass bearings before making any decisions reliant upon them. Copyright The Pedder Group © 2026.

Energy Efficiency Rating	
Very energy efficient - lower running costs	Current
102 plus) A	
(61-91) B	
(49-60) C	
(35-48) D	
(29-34) E	
(21-28) F	
(1-20) G	
Not energy efficient - higher running costs	
EU Directive 2002/91/EC 	

Pedder Property Ltd trading as Pedder for themselves and for the vendor/landlord of this property whose agents they are, give notice that (1) these particulars do not constitute any part of an offer or contract, (2) all statements contained within these particulars are made without responsibility on the part of Pedder or the vendor/landlord, (3) whilst made in good faith, none of the statements contained within these particulars are to be relied upon as a statement of representation or fact, (4) any intending purchaser/tenant must satisfy him/herself by inspection or otherwise as to the correctness of each of the statements contained within these particulars, (5) the vendor/landlord does not make or give either Pedder or any person in their employment any authority to make or give representation or warranty whatsoever in relation to this property.