

Edna Road Raynes Park, SW20 8BS

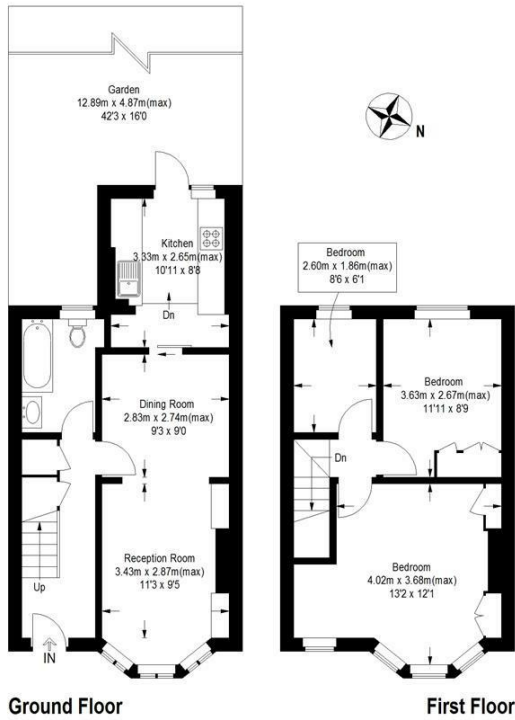
£2,600 PCM



THREE BEDROOM Edwardian house located in the popular Apostles area of Raynes Park, just 5 minutes walk to Raynes Park station and local amenities. The property has a double reception room opening to the kitchen with appliances including DISHWASHER. Two double bedrooms both with fitted wardrobes, one single to the first floor. Ground floor bathroom. Good size west facing garden. EPC band C. Council tax band D.

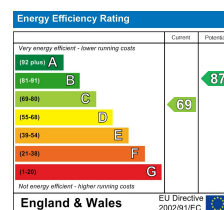
Edna Road, SW20

Approximate Gross Internal Area
 Ground Floor = 41.8 sq m / 450 sq ft
 First Floor = 34.3 sq m / 369 sq ft
 Total = 76.1 sq m / 819 sq ft



This floor plan is for representation purposes only and is not drawn to scale. Whilst every attempt has been made to ensure its accuracy measurements are approximate only and should be checked before making any decisions reliant upon them.
 Copyright Bespokeplans.co.uk 2020
 (ID656114)

- Three Bedrooms
- West Facing Garden
- 0.3 Miles To Raynes Park Station
- Large Through Lounge
- Neutrally Decorated
- First Months Advance Rent
- Five Weeks Security Deposit
- Holding Deposit = One Weeks Rent
- EPC Band C
- Council Tax Band D



Although these particulars are believed to be correct, their accuracy is not guaranteed and they do not form part of any contract.

Celebrating 30 years of successful Sales and Lettings in Merton

