

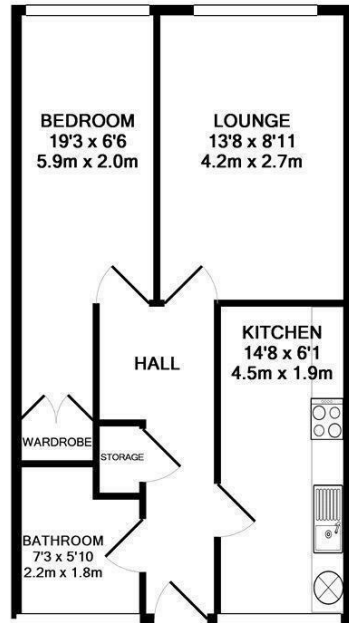
# URBAN lettings



## Angelina House, London, SE15 5UB

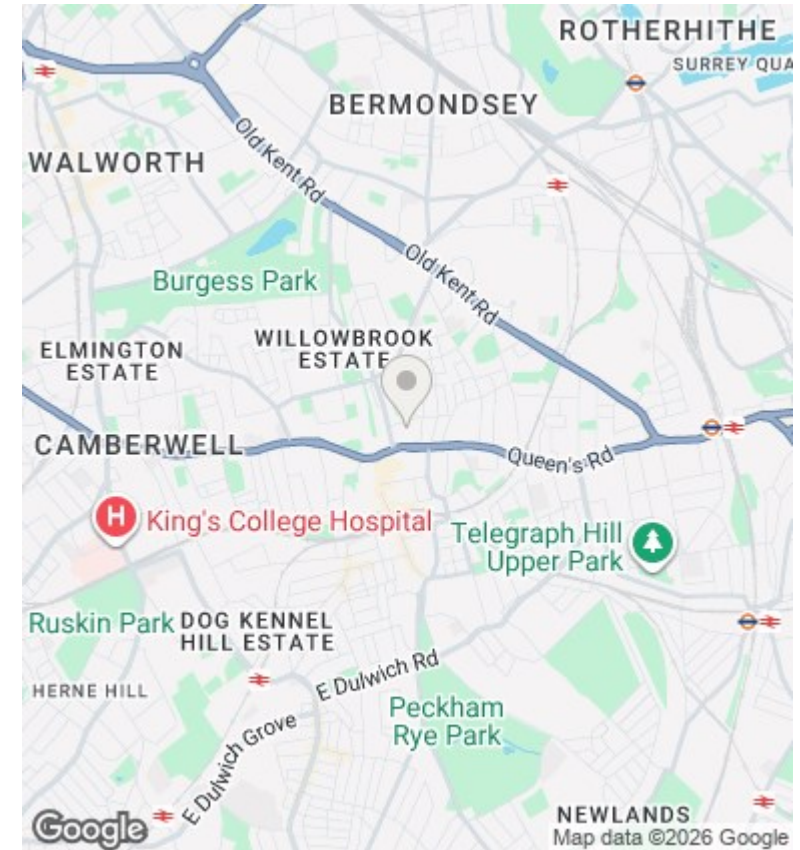
£1,400 PCM

- In Good Decorative Order
- Tiled Bathroom with Shower
- Excellent Transport Links
- One Double Bedroom Flat
- Double Glazing
- Short Walk to High Street
- Separate Kitchen
- Wood Flooring Throughout



TOTAL APPROX. FLOOR AREA 438 SQ.FT. (40.7 SQ.M.)

Whilst every attempt has been made to ensure the accuracy of the floor plan contained here, measurements of doors, windows, rooms and any other items are approximate and no responsibility is taken for any error, omission, or mis-statement. This plan is for illustrative purposes only and should be used as such by any prospective purchaser. The services, systems and appliances shown have not been tested and no guarantee as to their operability or efficiency can be given  
Made with Metropix ©2015



## Directions

## Viewings

Viewings by arrangement only. Call 020 7585 2761 to make an appointment.

## Council Tax Band

C

## EPC Rating:

C

Energy Efficiency Rating		Current	Potential
Very energy efficient - lower running costs			
(92 plus) A			
(81-91) B			
(69-80) C		77	80
(55-68) D			
(39-54) E			
(21-38) F			
(1-20) G			
Not energy efficient - higher running costs			
England & Wales		EU Directive 2002/91/EC	