



Mackenzie Road, Beckenham

Offers In Excess Of £600,000



Property Summary

Propertyworld is delighted to present this attractive, chain-free three-bedroom Victorian family home, offering a wonderful opportunity to create a bespoke residence in one of the area's most sought-after locations. While there is scope for cosmetic updating to reflect individual tastes, the property has been well maintained, is ready to move into, and offers generous proportions rarely found at this price point.

Ideally suited to families, the home enjoys a friendly community setting within the catchment area for the highly regarded Outstanding Ofsted-rated Stewart Fleming Primary School. Excellent transport links are close by, with Birkbeck Station just across the road, Clock House Station within easy walking distance offering fast services to London Bridge, Cannon Street and Charing Cross, and Kent House Station, providing regular trains to London Victoria.

The ground floor features a bright front reception room, leading to a separate dining room before opening through double doors into a stunning full-width kitchen/dining room. Flooded with natural light, this impressive space forms the heart of the home, complete with a breakfast bar, extensive worktops, ample storage, a practical utility area and a guest WC.

Upstairs are two generous double bedrooms, a well-proportioned single bedroom and a standard three-piece suite and useful built-in storage. The principal bedroom also benefits from a full wall of fitted wardrobes and drawers.

Outside, the property offers off-road parking to the front, while the rear features a patio leading to a sunny lawned garden—perfect for entertaining, relaxing and family life.

Offered with no onward chain, an exceptional kitchen/dining space and excellent potential to add your own style, this is a superb family home that deserves an internal viewing.

Penge Sales
 020 8659 1005
www.propertyworlduk.net

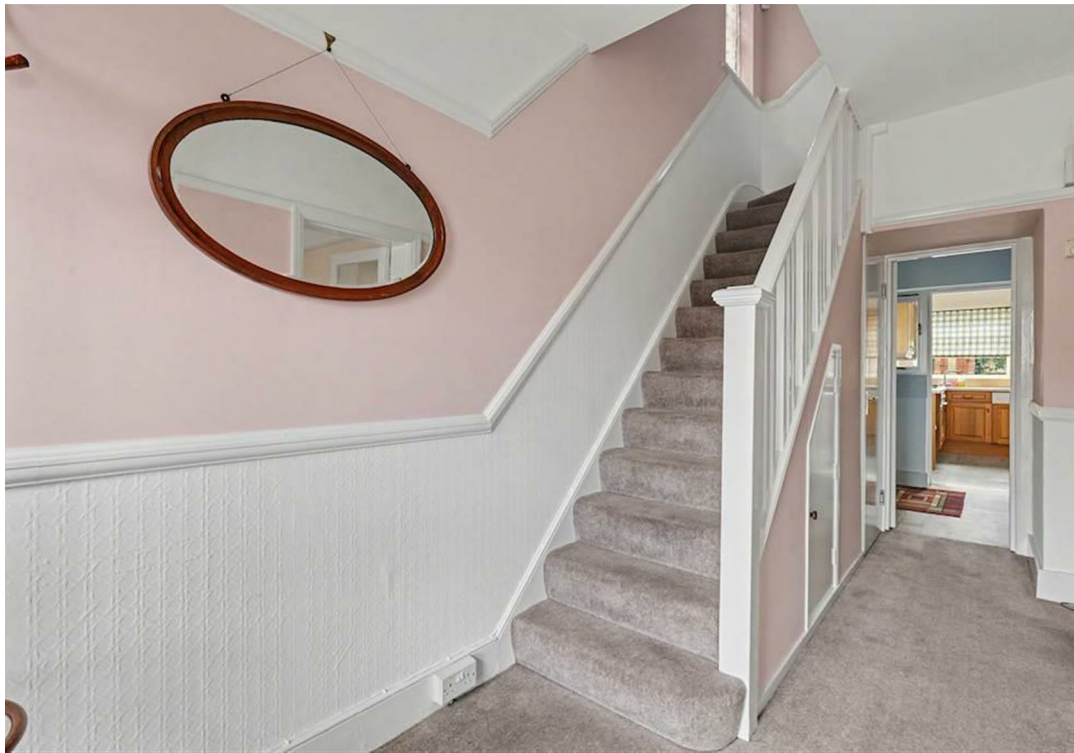
Property Summary

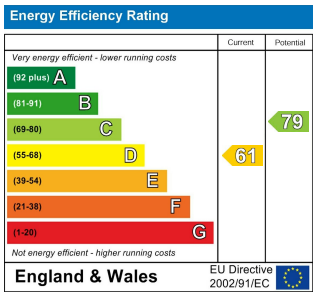
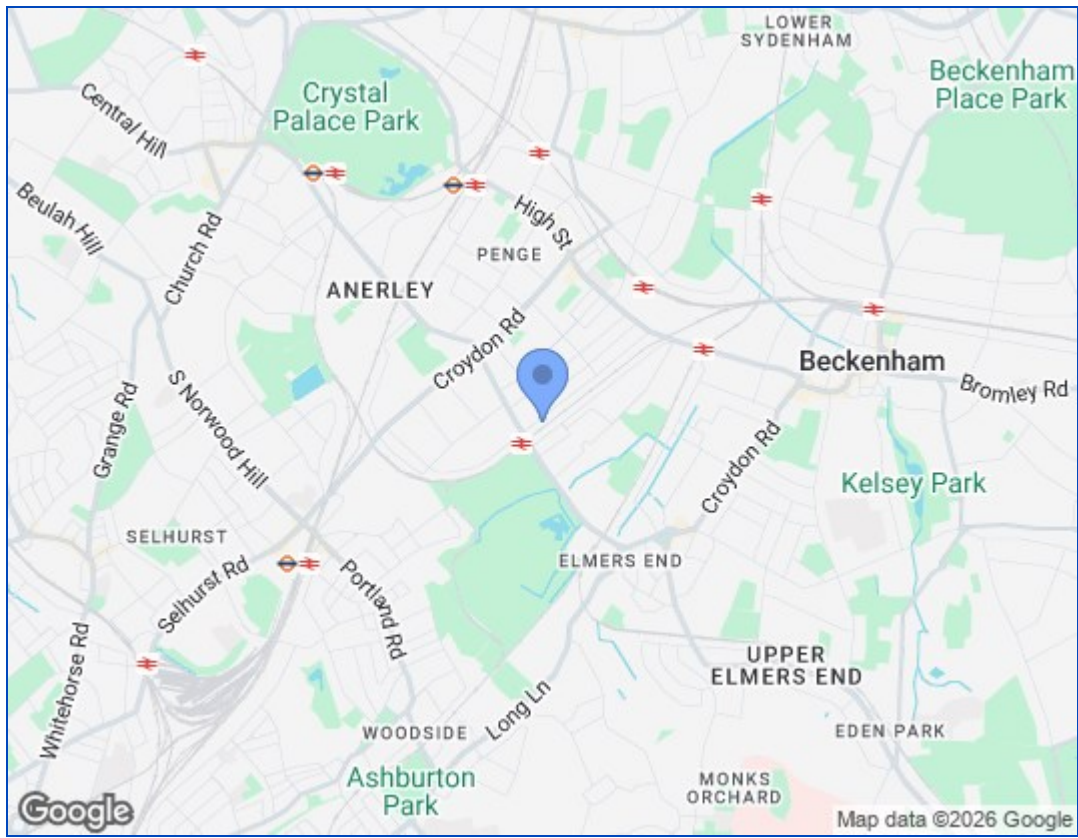
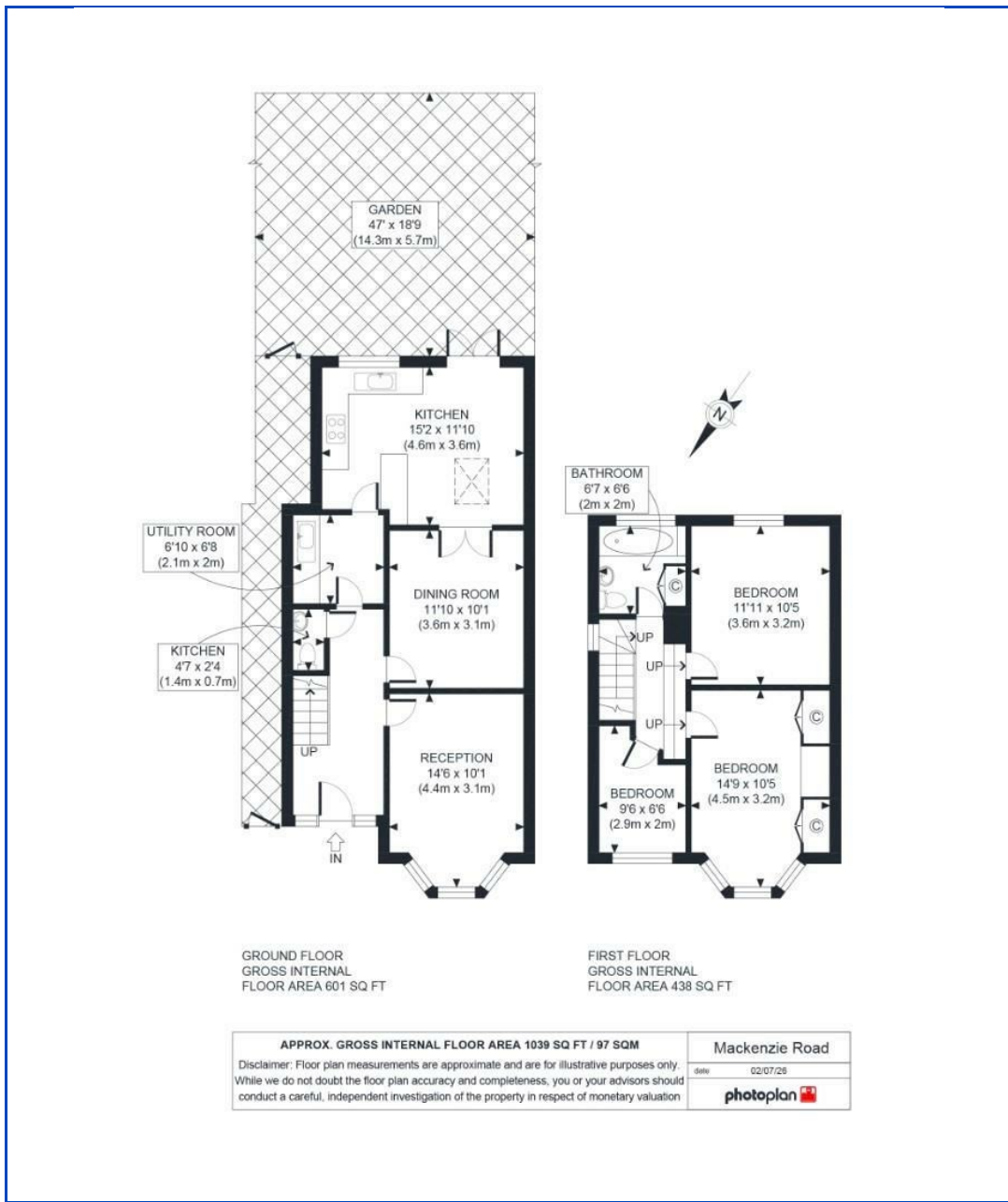
- Three bedrooms
- Terraced family home
- Two separate reception rooms
- 15.2ft x 11.10ft approx kitchen/diner
- Additional ground floor W/c
- No onward chain
- Off Road parking
- Freehold Tenure
- Epc rated D
- Council Tax Band C

Our Vendor Loves...

This was a much-loved family home, and a great area, to grow up in. Safe and extremely well connected, there is plenty of opportunity to make the most of Central and South London, Bromley and beyond, with all they offer. There is plenty of communal space, which creates a comforting environment that we will miss along with the sunny garden where we made happy memories.







These particulars, whilst believed to be accurate are set out as a general outline only for guidance and do not constitute any part of an offer or contract. Intending purchasers should not rely on them as statements of representation of fact, but must satisfy themselves by inspection or otherwise as to their accuracy. No person in this firm's employment has the authority to make or give any representation or warranty in respect of the property.

