



GROUND FLOOR FROBISHER ROAD | | TURNPIKE LANE | N8 0QU

£2,100 PCM

LIVINGSPACE
ESTATE AGENTS

GROUND FLOOR FROBISHER ROAD |
TURNPIKE LANE | N8 0QU

£2,100 PCM

LIVING SPACE ARE PLEASED TO OFFER THIS SPACIOUS 2 BEDROOM GARDEN FLAT SITUATED IN A GREAT LOCATION AND WITHIN MINUTES FROM TURNPIKE LANE TUBE STATION. THE PROPERTY IOD FLOORS, 2 GOOD SIZE DOUBLE BEDROOMS, GOOD SIZE RECEPTION ROOM AND SOLE USE OF A GARDEN. THIS PROPERTY IS UNFURNISHED. AVAILABLE NOW.

- FLAT - UNFURNISHED
- 1 BATHROOM
- ENERGY RATING : C
- NO PARKING
- WASHING MACHINE
- 2 BEDS + 1 RECEPTION
- SHOWER
- NO SPECIAL ACCESSIBILITY
- GARDEN
- GAS CENTRAL HEATING

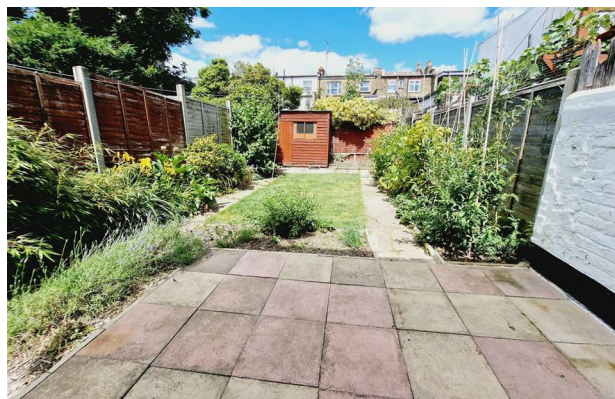
KITCHEN

LIVING/DINING ROOM

BEDROOM 1

BEDROOM 2

BATHROOM



Energy Efficiency Rating		
	Current	Potential
<i>Very energy efficient - lower running costs</i>		
(92 plus) A		
(81-91) B		
(69-80) C		
(55-68) D		
(39-54) E		
(21-38) F		
(1-20) G		
<i>Not energy efficient - higher running costs</i>		
England & Wales	EU Directive 2002/91/EC	

COUNCIL TAX BAND C
EPC RATING

105 ST PAULS ROAD
ISLINGTON
LONDON
N1 2NA
020 7354 0505
INFO@LSEA.CO.UK