



Hamlyn Gardens, SE19 | £3,000 Per Month

020 8702 9333

crystalpalace@pedderproperty.com

pedder
We live local



In General

- Detached family house
- Four bedrooms
- Separate downstairs W/C
- Drive with garage
- Unfurnished
- Close to the Triangle
- Available mid October

In Detail

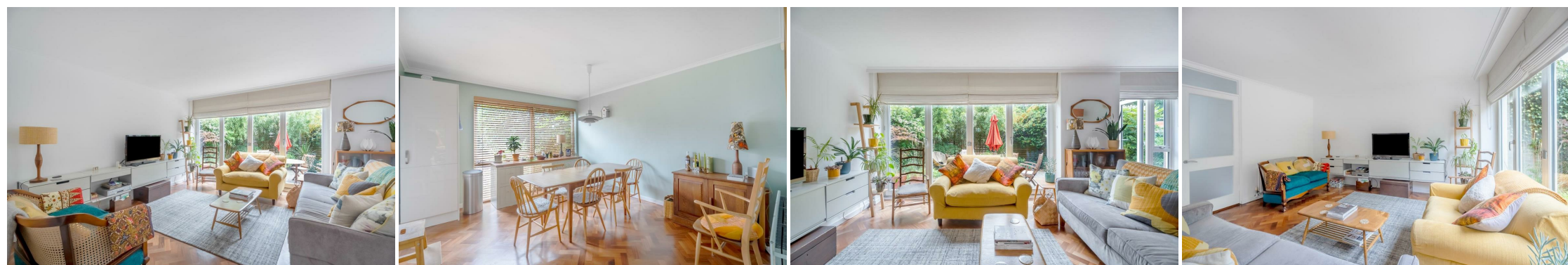
A splendid four bedroom detached family house forming part of a quiet cul de sac nearby central Crystal Palace to rent.

This light and bright mid-century property is arranged over two levels and offers immediately enjoyable accommodation for those seeking a comfortable long-term rental. Highlights include parquet flooring, a downstairs W/C, two reception rooms, ample storage, and semi-open plan kitchen with granite worktops and island with plenty of storage.

Externally there is off street parking and a garage (ideal for additional storage), as well as a low maintenance rear garden with a sunny southerly aspect.

Hamlyn Gardens is a family-orientated location which works well for access to multiple shopping and leisure options at the Triangle, also primarily served by both Gipsy Hill and Crystal Palace rail links.

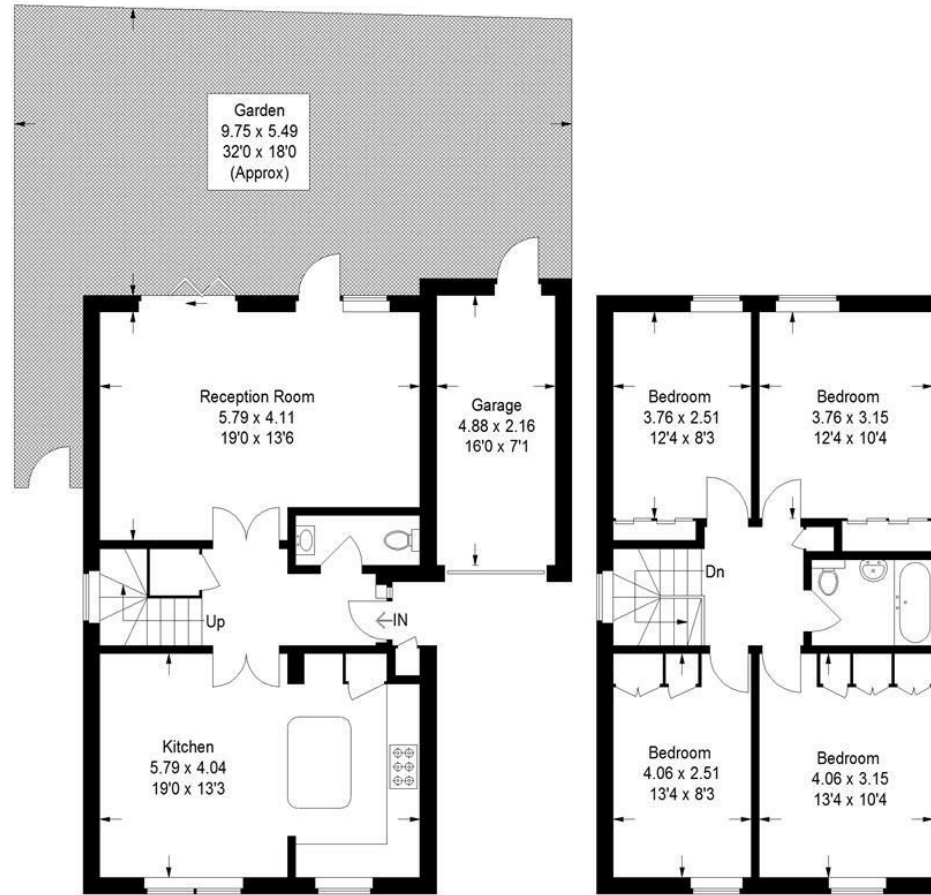
EPC: C | Council Tax Band: E | Available mid-October | Offered Unfurnished | HD: £692.30 | SD: £3,461.53



Floorplan

Hamlyn Gardens, SE19

Approximate Gross Internal Area
 118.4 sq m / 1274 sq ft
 Garage = 10.9 sq m / 117 sq ft
 Total = 129.3 sq m / 1391 sq ft



Ground Floor

First Floor

Copyright www.pedderproperty.com © 2024

These plans are for representation purposes only as defined by RICS - Code of Measuring Practice. Not drawn to Scale. Windows and door openings are approximate. Please check all dimensions, shapes and compass bearings before making any decisions reliant upon them.

Energy Efficiency Rating		Current	Potential
Very energy efficient - lower running costs			
102 plus) A			83
81-101) B			
69-80) C			
55-68) D		71	
39-54) E			
21-38) F			
1-20) G			
Not energy efficient - higher running costs			
England & Wales		EU Directive 2002/91/EC	

Pedder Property Ltd trading as Pedder for themselves and for the vendor/landlord of this property whose agents they are, give notice that (1) these particulars do not constitute any part of an offer or contract, (2) all statements contained within these particulars are made without responsibility on the part of Pedder or the vendor/landlord, (3) whilst made in good faith, none of the statements contained within these particulars are to be relied upon as a statement of representation or fact, (4) any intending purchaser/tenant must satisfy him/herself by inspection or otherwise as to the correctness of each of the statements contained within these particulars, (5) the vendor/landlord does not make or give either Pedder or any person in their employment any authority to make or give representation or warranty whatsoever in relation to this property.