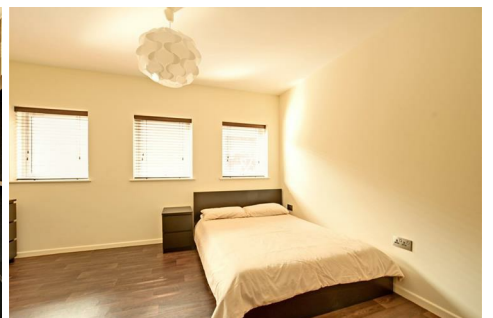


# NOPS

Professional Letting

— Established 1990 —



## Flat 5 43 Jericho Street, Jericho, Oxford, OX2 6BU

### Modern 1 BEDROOM MAISONETTE

Situated behind the vibrant and bohemian high street of Jericho

Easy walking distance to the city centre

High-specification design

Open-plan living space

#### Interior Features:

Double bedroom with built-in wardrobes

Open plan fitted kitchen/diner/reception area

Fully tiled wet room with low-level WC and heated towel rail

#### Kitchen Features:

Bosch appliances, including integral fridge freezer and dishwasher

Four-ring induction hob and stainless steel extractor hood

Integral oven and washer dryer

Granite work surfaces with eye and low-level units

Additional Amenities:

- 1 Bedroom
- 1 Receptions
- 1 Bathroom
- Jericho
- Furnished Property
- Flat
- No Parking

**£2,100 PCM**

**GROUND FLOOR**  
APPROX. 26.1 SQ. METRES (281.1 SQ. FEET)



**FIRST FLOOR**  
APPROX. 25.3 SQ. METRES (272.2 SQ. FEET)



TOTAL AREA: APPROX. 51.4 SQ. METRES (553.4 SQ. FEET)

| Energy Efficiency Rating                    |  | Current                 | Potential |
|---|--|-------------------------|-----------|
| Very energy efficient - lower running costs |  |                         |           |
| (92 plus) <b>A</b>                          |  |                         |           |
| (81-91) <b>B</b>                            |  |                         |           |
| (69-80) <b>C</b>                            |  |                         |           |
| (55-68) <b>D</b>                            |  | 63                      | 63        |
| (39-54) <b>E</b>                            |  |                         |           |
| (21-38) <b>F</b>                            |  |                         |           |
| (1-20) <b>G</b>                             |  |                         |           |
| Not energy efficient - higher running costs |  |                         |           |
| <b>England &amp; Wales</b>                  |  | EU Directive 2002/91/EC |           |

| Environmental Impact (CO <sub>2</sub> ) Rating                  |  | Current                 | Potential |
|---|--|-------------------------|-----------|
| Very environmentally friendly - lower CO <sub>2</sub> emissions |  |                         |           |
| (92 plus) <b>A</b>  |  |                         |           |
| (81-91) <b>B</b>  |  |                         |           |
| (69-80) <b>C</b>  |  |                         |           |
| (55-68) <b>D</b>  |  | 63                      | 63        |
| (39-54) <b>E</b>  |  |                         |           |
| (21-38) <b>F</b>  |  |                         |           |
| (1-20) <b>G</b>   |  |                         |           |
| Not environmentally friendly - higher CO <sub>2</sub> emissions |  |                         |           |
| <b>England &amp; Wales</b>                                      |  | EU Directive 2002/91/EC |           |