



Worsley Bridge Road, BR3 | Offers In Excess Of
£900,000

02087029777
sydenham@pedderproperty.com

pedder
We live local



In General

- Substantial Edwardian Semi Detached home
- Two receptions
- Kitchen
- All Seasons Garden Room
- Four double bedrooms + study
- Two bathrooms + ensuite WC
- Superb rear garden
- Off street parking
- Good local schools

In Detail

Built during the height of the Arts and Crafts movement, this superb five bed, two bath semi detached home is rich in period character, complemented by an incredible landscaped garden and off street parking, situated close to green open spaces and good local schools.

Edwardian homes are particularly prized for their exceptional craftsmanship, generous proportions and architectural detailing, making them highly sought after by buyers who value character and individuality.

Throughout the house, a carefully curated palette of warm textures and earthy tones creates an inviting and welcoming atmosphere. The front reception room is both elegant and comfortable, centred around a fireplace and enhanced by a particularly large and beautiful bay window where an established wisteria creates a wonderful natural screen. To the rear, a second reception room connects with the kitchen and dining space, creating an ideal setting for modern family life. Designed for both everyday living and entertaining, this sociable space also opens directly onto the garden. The kitchen has been arranged to make cooking a breeze, with a practical layout, well planned storage and generous preparation surfaces. A substantial garden room follows, with a fully glazed roof and panoramic garden views, providing a bright and versatile reception space throughout the year. The upper floors offer four good sized double bedrooms and a study alongside two well appointed bathrooms.

Outside, the mature rear garden extends over 130 ft providing a peaceful retreat from the bustle of daily life. Thoughtfully landscaped with a lovely variety of rose beds, ornamental grasses and seasonal flowering borders, it is framed by mature trees that create a sense of privacy and enclosure throughout the year. A winding pathway leads through layered greenery and attractive seating areas are thoughtfully positioned to capture both sun and shade, offering inviting spots for morning coffee or evening relaxation.

EPC:



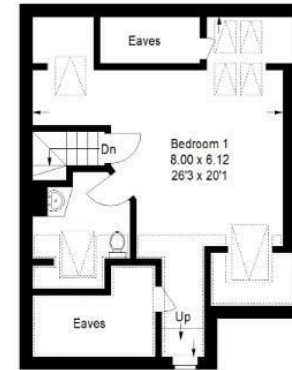
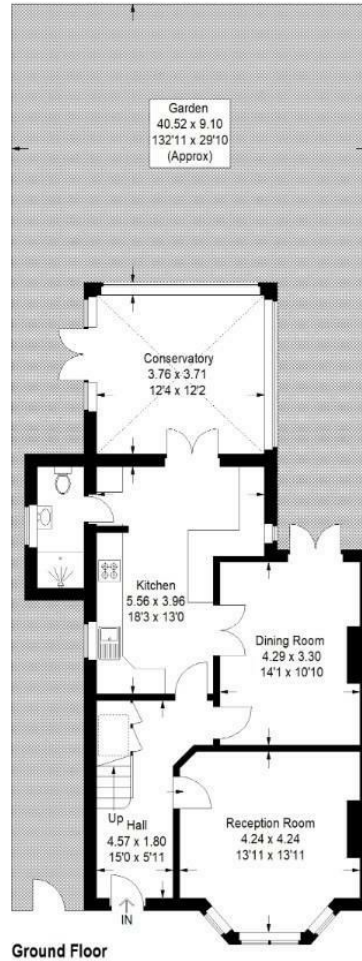
Floorplan

Worsley Bridge Road, BR3

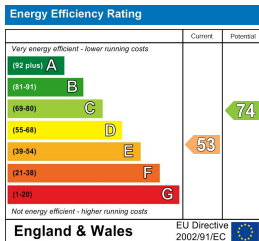
Approximate Gross Internal Area
(Excluding Eaves)
178.1 sq m / 1917 sq ft



= Reduced headroom below 1.5 m / 5'0"



Copyright www.pedderproperty.com © 2026
These plans are for representation purposes only as defined by RICS - Code of Measuring Practice.
Not drawn to Scale. Windows and door openings are approximate. Please check all dimensions,
shapes and compass bearings before making any decisions reliant upon them.



Pedder Property Ltd trading as Pedder for themselves and for the vendor/landlord of this property whose agents they are, give notice that (1) these particulars do not constitute any part of an offer or contract, (2) all statements contained within these particulars are made without responsibility on the part of Pedder or the vendor/landlord, (3) whilst made in good faith, none of the statements contained within these particulars are to be relied upon as a statement of representation or fact, (4) any intending purchaser/tenant must satisfy him/herself by inspection or otherwise as to the correctness of each of the statements contained within these particulars, (5) the vendor/landlord does not make or give either Pedder or any person in their employment any authority to make or give representation or warranty whatsoever in relation to this property.