

e



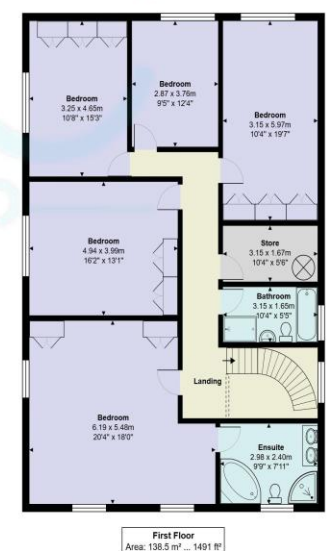
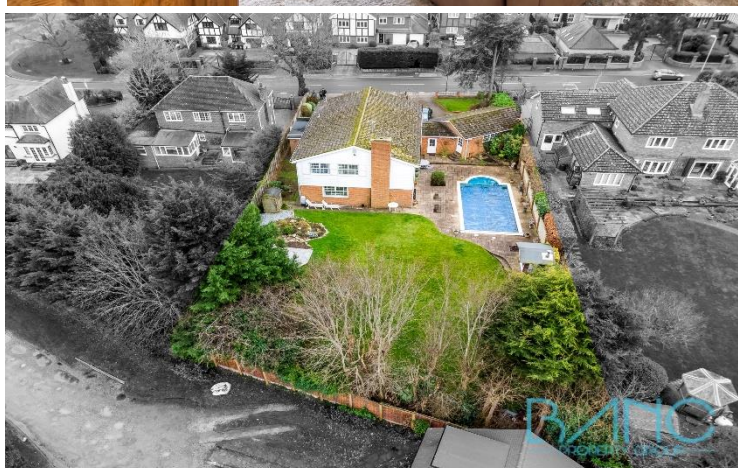
East Ridgeway, Cuffley



- PREMIER LOCATION
- 5 BEDROOMS
- 4 RECEPTION ROOMS
- 2 BATHROOMS
- SCOPE TO ENLARGE FURTHER STPP
- SPACIOUS ACCOMMODATION
- POOL AND LARGE GARDEN
- TRIPLE GARAGE

East Ridgeway
Cuffley EN6 4AP

Situated in the PREMIER LOCATION of THE EAST RIDGEWAY in Cuffley and just a short distance from Cuffley village and train station, this magnificent 5-BEDROOM, 4-reception room family home is a standout property. Set on a generous plot, it offers AMPLE POTENTIAL and well-proportioned space. Upon entering, you are welcomed by a grand hallway leading to a SPACIOUS KITCHEN BREAKFAST ROOM, ideal for family gatherings and culinary endeavors. The ground floor also features a playroom, study, living room, and an additional LIVING/DINING ROOM designed for entertaining. A utility room off the kitchen provides convenient access to the TRIPLE GARAGE. The first floor boasts five well-sized double bedrooms, including a master suite with an EN-SUITE BATHROOM, and a family bathroom, ensuring comfort and privacy for all residents. The exterior of the property is perfect for alfresco dining, with a PATIO AREA and a SWIMMING POOL for outdoor enjoyment. The triple garage, in-out driveway, and ample parking cater to all practical needs. This exceptional home is designed for a comfortable and refined lifestyle. If you require any further information or assistance regarding this property, please do not hesitate to get in touch.



East Ridgeway, Cuffley, Potters Bar, EN6 4AP

Total Area: 337.5 m² ... 3633 ft² (excluding garden)
All measurements are approximate and for display purposes only.