

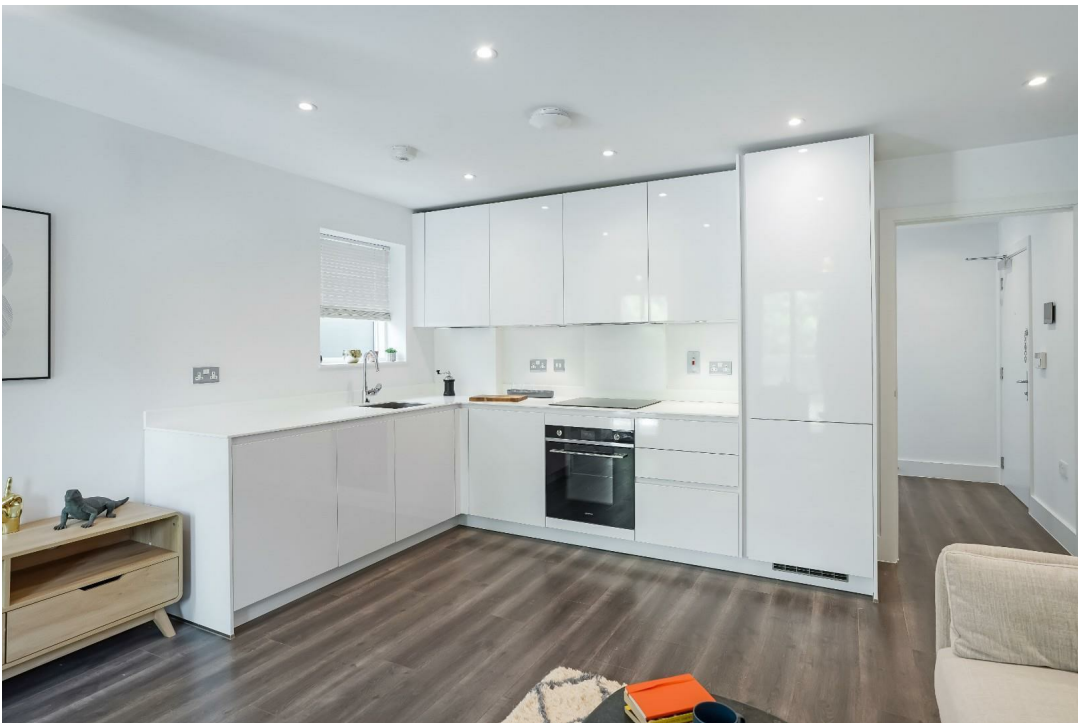


1 Scotts Lane, BR2 | £375,000

02087029999

[newhomes@pedderproperty.com](mailto:newhomes@pedderproperty.com)

**pedder**  
NEW HOMES

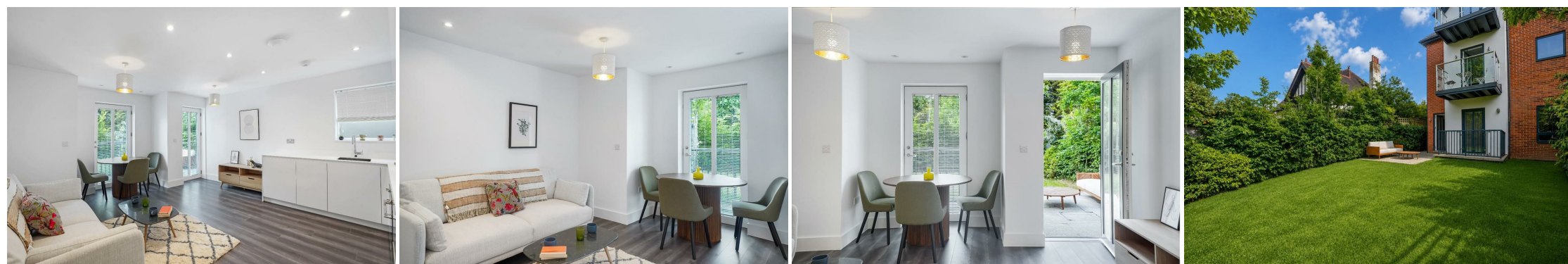


# In General

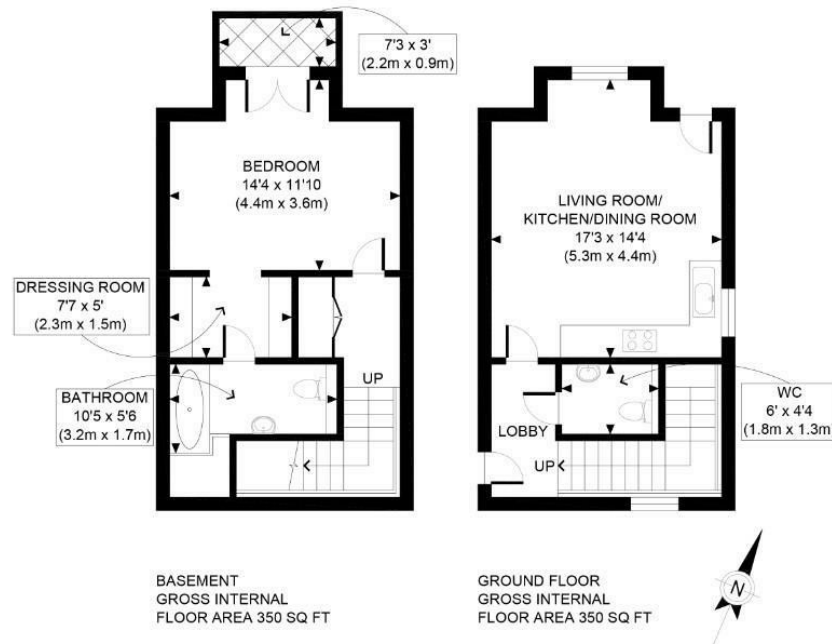
- Large Private Garden
- 700 Sq Ft
- Off-Street Parking
- Underfloor Heating
- Walk-in Wardrobe
- En-suite Bathroom
- Pronorm German Kitchen
- Smeg Appliances
- Corian Worktop
- 5-year Building Warranty

# In Detail

A beautifully presented and exceptionally spacious 1-bedroom duplex apartment with large private garden.



# Floorplan



APPROX. GROSS INTERNAL FLOOR AREA 700 SQ FT / 65 SQM	Scotts lane
Disclaimer: Floor plan measurements are approximate and are for illustrative purposes only. While we do not doubt the floor plan accuracy and completeness, you or your advisors should conduct a careful, independent investigation of the property in respect of monetary valuation	date 14/01/21
	photoplan

Energy Efficiency Rating		Current	Potential
Very energy efficient - lower running costs			
102 plus) A			
81-101) B			
69-80) C			
55-68) D			
39-54) E			
21-38) F			
1-20) G			
Not energy efficient - higher running costs			
England & Wales	EU Directive 2002/91/EC		

Pedder Property Ltd trading as Pedder for themselves and for the vendor/landlord of this property whose agents they are, give notice that (1) these particulars do not constitute any part of an offer or contract, (2) all statements contained within these particulars are made without responsibility on the part of Pedder or the vendor/landlord, (3) whilst made in good faith, none of the statements contained within these particulars are to be relied upon as a statement of representation or fact, (4) any intending purchaser/tenant must satisfy him/herself by inspection or otherwise as to the correctness of each of the statements contained within these particulars, (5) the vendor/landlord does not make or give either Pedder or any person in their employment any authority to make or give representation or warranty whatsoever in relation to this property.