

Meadway Raynes Park, SW20 9HY

£2,000 Per Month



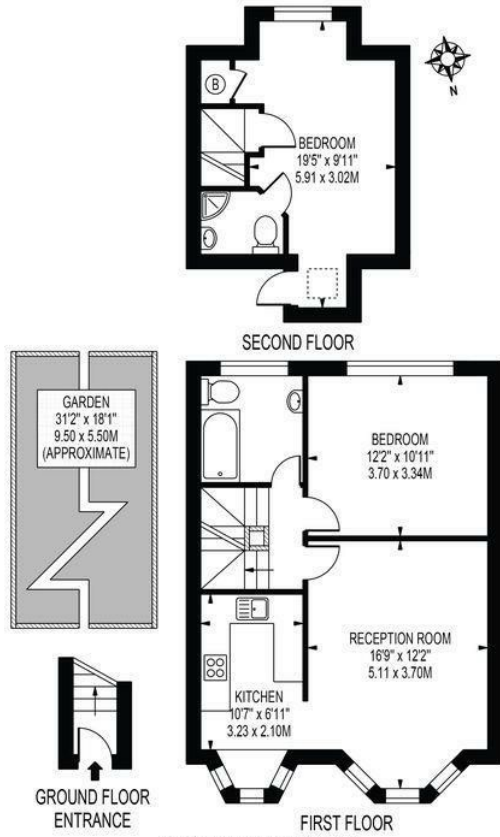
This modern two bedroom, two bathroom split level conversion flat with private garden, is situated approximately 10 minutes walk from Raynes Park station. A spacious property comprising of a good size reception room, contemporary fully fitted kitchen including dishwasher, family bathroom, two double bedrooms, the second floor one with ensuite shower/wet room. Off street parking and private garden.

Also benefits from gas central heating and double glazing.

EPC TBC. Council tax band D.

**MEADWAY,
RAYNES PARK**

APPROXIMATE GROSS INTERNAL FLOOR AREA: 729 SQ FT - 67.70 SQ M



THIS FLOOR PLAN SHOULD BE USED AS A GENERAL OUTLINE FOR GUIDANCE ONLY AND DOES NOT CONSTITUTE IN WHOLE OR IN PART AN OFFER OR CONTRACT. ANY INTENDING PURCHASER OR LESSEE SHOULD SATISFY THEMSELVES BY INSPECTION, SEARCHES, ENQUIRIES AND FULL SURVEY AS TO THE CORRECTNESS OF EACH STATEMENT. ANY AREAS, MEASUREMENTS OR DISTANCES QUOTED ARE APPROXIMATE AND SHOULD NOT BE USED TO VALUE A PROPERTY OR BE THE BASIS OF ANY SALE OR LET.



- Two double bedrooms
- Two bathrooms
- Off street parking
- Private garden
- Gas central heating
- First months rent in advance
- Five weeks deposit
- Holding deposit - one weeks rent
- EPC TBC
- Council tax band D

Energy Efficiency Rating		
	Current	Potential
Very energy efficient - lower running costs		
(92 plus) A		
(81-91) B		
(69-80) C		
(55-68) D		
(39-54) E		
(21-38) F		
(1-20) G		
Not energy efficient - higher running costs		
England & Wales	EU Directive 2002/91/EC	



Although these particulars are believed to be correct, their accuracy is not guaranteed and they do not form part of any contract.

**Celebrating 30 years
of successful Sales and
Lettings in Merton**

