



## Devonshire Road, London, W4 2EU

A bright & beautifully presented one bedroom first floor apartment situated in the very popular parade in the heart of Chiswick. Just moments from the high road with its array of boutique shops and restaurants, main retailers include M&S(closed until the Autumn) Waitrose, Sainsbury, Tesco & The Co-op. Accommodation provides : open plan living area with galley style kitchen and central island unit, two feature sash windows double bedroom to rear with flush custom built wardrobes and feature sash window, luxury shower room , entrance hall with flush fitted storage cupboards, wood effect flooring throughout gas fired central heating & hot water, the property is offered as unfurnished and available immediately. Local transport links include Turnham Green & Stamford brook tube stations (District Line) numerous local bus routes , with convenient vehicular access via A4/M4 to central London, Heathrow & The West. Hounslow Council Band C. EPC-D. Available 9th September

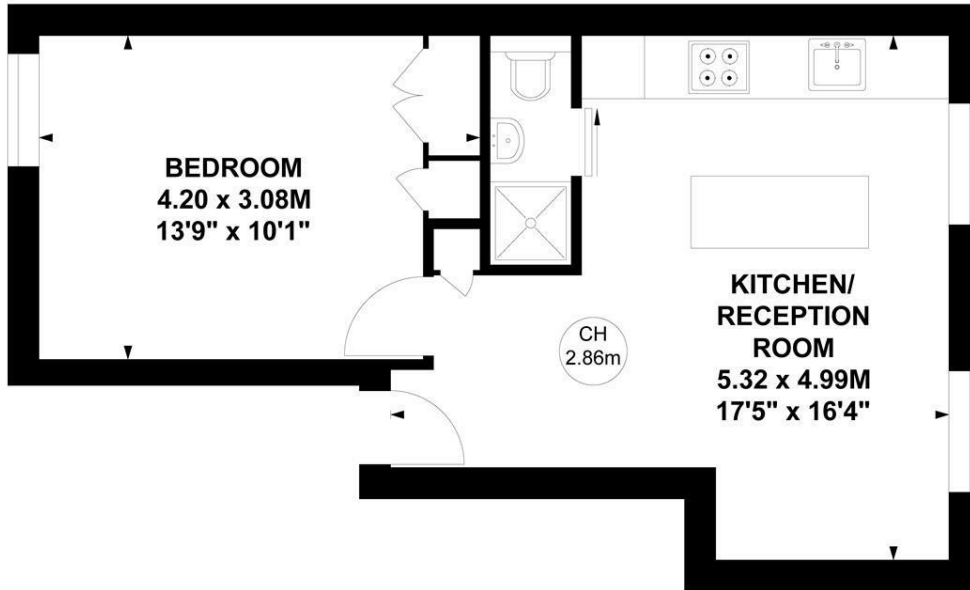
- Bright and immaculately presented apartment
- Located in the heart of Chiswick
- Great for transport links & amenities
- Open plan living room with high ceiling
- Galley style kitchen including island unit
- Double bedroom with flush fitted wardrobes
- Luxury shower room
- Entrance hall with fitted storage
- Gas fired central heating & hot water
- Offered unfurnished & available 9th September

**£1,900 Per Calendar Month**

# Devonshire Road, W4

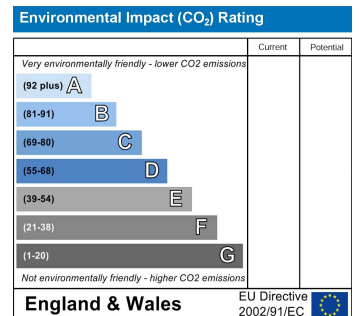
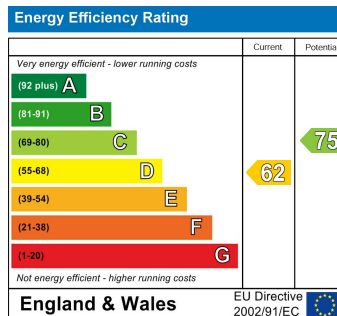
Approximate gross internal area  
34.13 sq m / 367 sq ft

Key :  
CH - Ceiling Height



## First Floor

Not to scale, for guidance only and must not be relied upon as a statement of fact.  
All measurements and areas are approximate only



5-7 Turnham Green Terrace, Chiswick, London, W4 1RG

Tel 020 8747 8800

E-mail [lettings@whitmanandco.com](mailto:lettings@whitmanandco.com)

Website [www.whitmanandco.com](http://www.whitmanandco.com)