



Poplar Grove, Burnham-on-Crouch
CM0 8RJ
Asking Price £340,000
Freehold

Palmer & Partners

The leading independent agents in Essex & Suffolk

palmerpartners.com

Key Features:

- Beautifully Presented Two Bedroom Bungalow
- Generously Sized Reception Rooms
- Modern Kitchen
- Well Proportioned Bedrooms and Downstairs Cloakroom
- Low Maintenance, Private Rear Garden with Patio and Decking Area
- Must Be Viewed

We are delighted to present this beautifully appointed two-bedroom detached bungalow, located in the lovely riverside town of Burnham-on-Crouch. Ideally positioned, this property is within walking distance of Burnham-on-Crouch Train Station, offering excellent transport links, as well as being close to a range of local amenities, reputable schools, and picturesque parks and public spaces.

Upon entering, you are welcomed by a spacious and inviting Entrance Hall, which provides access to the main living areas of the home. The bungalow features two reception rooms, including a comfortable lounge with a log burner. The bright and airy orangery, with French doors leading out to the garden, connects seamlessly to the lounge, offering additional living space. A further door leads to the garage room.



The kitchen is both functional and cosy, offering ample cupboard storage and a built-in fridge freezer. There is also space for freestanding appliances such as a gas cooker, oven, washing machine, and dryer, making this a practical and well-equipped space. Both bedrooms are generously proportioned, with the master bedroom benefiting from fitted wardrobes, ensuring plenty of storage space. The bathroom is well-appointed,

comprising a walk-in shower cubicle, hand wash basin, and WC.

Externally, the property is complemented by a fully established rear garden, which is laid to lawn and includes a large patio area, side access, decking, and a workshop area. A shed is also included for additional storage. The property offers a large driveway, providing ample off-road parking for multiple vehicles.



This charming bungalow is an excellent opportunity for those seeking a peaceful yet conveniently located home. Palmers and Partners highly encourage early internal viewings to fully appreciate the potential this property has to offer.

Entrance Hall

Lounge: 4.80 x 3.33

Orangery: 3.46 x 5.93

Kitchen: 2.5 x 2.5

Bathroom

Bedroom 1: 3.56 x 3.33

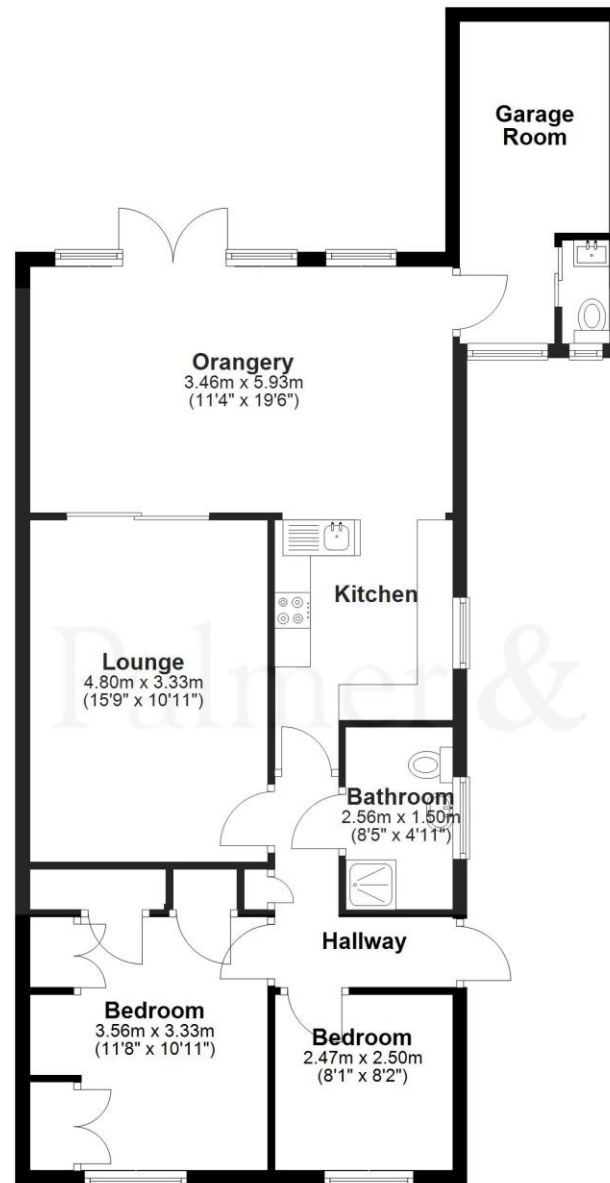
Bedroom 2: 2.47 x 2.50

Garage Room: 4.8 x 2.1



Ground Floor

Approx. 85.0 sq. metres (914.7 sq. feet)



Total area: approx. 85.0 sq. metres (914.7 sq. feet)

Poplar Grove, Burnham

Palmer and Partners would like to draw your attention to the following: I] these particulars do not constitute part of an offer or contract. II] These particulars and any pictures or plans represent the opinion of the author and are given in good faith for guidance only and must not be construed as statement or fact. III] Nothing in these particulars shall be deemed a statement that the property is not in good condition or otherwise. We have not carried out a structural survey of the property and have not tested services, appliances and special fittings IV] measurements are generally taken by the use of a sonic measuring machine and will usually be the largest measurements of the room in question.





182 Moulsham Street, Chelmsford, Essex, CM2 0LG

chelmsford@palmerpartners.com

Palmer & Partners

The leading independent agents in Essex & Suffolk

palmerpartners.com