



Carpenter Path, Hutton



The Property

Charming three-bedroom terraced house boasting a newly decorated interior and less than one mile from Shenfield Station and Broadway, offered with NO ONWARD CHAIN.

As you enter the home you are greeted by a spacious hallway leading into the open-plan living, dining room which spans the depth of the house, with French doors leading into the private garden.

The lovely, fitted kitchen boasts plenty of storage, with an integrated oven/gas hob and space for other appliances.

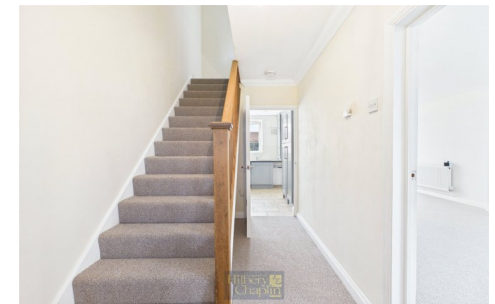
To the first floor there are three bedrooms of which two are doubles and a third single room, with a three-piece bathroom suite.

Externally there is a good-sized front garden and to the rear a generous sized garden with patio, mostly laid to lawn and side access. To the front there is communal parking serving the street.

This property is perfect for a professional couple, small family, or investors alike and must be viewed to be fully appreciated.

Council Tax Band C. EPC rating C.

Charming three-bedroom terraced house. For further information and to arrange a viewing call 01277 262600.



Location and approximate mileages

Shenfield railway station	1 mile
M25 (Junction 28)	4.5 miles
Southend airport	19 miles
Stansted airport	25 miles
Gatwick airport	53 miles

Carpenter Path is in the residential area of Hutton, Essex.

There are various schools for all ages, including the Wind in the Willows Nursery, Long Ridings primary school, St. Martins school, plus many more.

Shenfield Broadway offers an attractive high street located one mile away with shops such as Tesco, Co-op, and bars and restaurants, coffee shops, and Library with the busier town of Brentwood just 2.5 miles away.

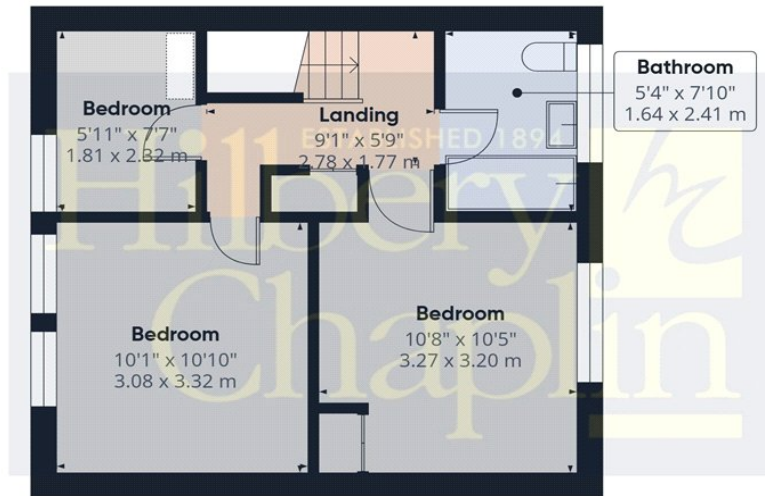
There are plenty of parks, country parks, sport facilities, and golf clubs in and around the local area. The Hutton Community Centre is a charity run centre offering a variety of services.

Frequent trains link Shenfield railway station and the Elizabeth line to central London and extend the line to Whitechapel, Farringdon, Tottenham Court Road, Bond Street, Paddington, and Heathrow.





Floor 0



Floor 1



Approximate total area⁽¹⁾

701 ft²
65.1 m²

Reduced headroom

11 ft²
1 m²

(1) Excluding balconies and terraces

Reduced headroom

..... Below 5 ft/1.5 m

Calculations reference the RICS IPMS 3C standard. Measurements are approximate and not to scale. This floor plan is intended for illustration only.

GIRAFFE360

PLEASE NOTE : Hilbery Chaplin, for themselves and for the vendors or lessors of this property give notice that : (1) These particulars do not constitute any part of an offer or a contract; (2) All descriptions, dimensions and other particulars are given only to present a fair overall view and, whilst believed to be correct, any intending purchaser or tenant should not rely on them as statements or representations of fact, but must satisfy themselves by inspection or otherwise as to the correctness of each of them; (3) No person in the employment of Hilbery Chaplin has any authority to make or give any representation or warranty, whatever, in relation to this property; (4) We have not tested any services, appliances, equipment or facilities and nothing in these particulars should be deemed to be a statement that they are in good working order or that the property is in good structural condition or otherwise; (5) Fixtures and fittings mentioned may not be included if an offer is accepted; (6) No enquiries have been made relating to Town Planning or Building Regulation Approval.