



Ewelme Road, SE23 | £750,000

02087029444

[foresthill@pedderproperty.com](mailto:foresthill@pedderproperty.com)

**pedder**  
We live local



# In General

- Chain-free
- Semi-detached family home
- Two reception rooms
- Three bedrooms
- Charming period features
- Large rear garden
- Front garden
- An abundance of natural light
- Close to local amenities
- Excellent transport links

# In Detail

A three-bedroom semi-detached family home in need of modernisation, situated on the highly sought-after Ewelme Road and offered to the market chain free.

Arranged over two floors, this charming home provides generous living accommodation and excellent scope for further enhancement. The ground floor comprises two bright and spacious reception rooms, a separate fitted kitchen, and access to an impressive rear garden, ideal for outdoor entertaining and family life.

Upstairs, the property features three well-proportioned bedrooms and a modern shower room with a separate WC. Further benefits include attractive period features, gas central heating, an abundance of natural light throughout, and much more.

Ideally located just 0.4 miles from Forest Hill station, the property enjoys excellent transport links to London Bridge, Victoria, Canada Water, Canary Wharf, Shoreditch, Whitechapel, Highbury & Islington, and beyond. A wide range of local amenities are also within easy walking distance, including popular schools, restaurants, coffee shops, cafés, and gastropubs.

Contact the Pedder Forest Hill sales team today to arrange a viewing.

EPC: D | Council Tax Band: E




# Floorplan

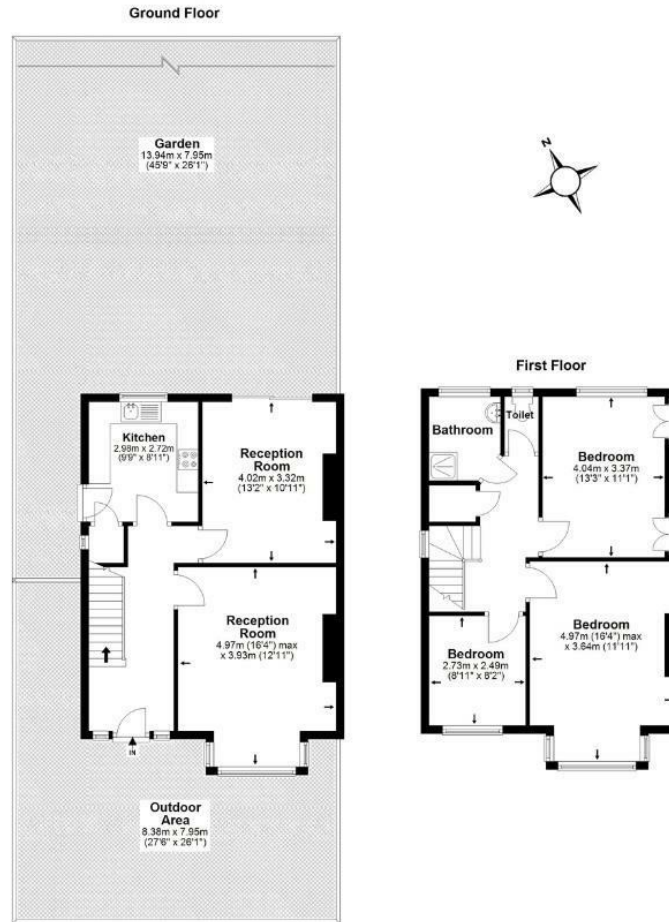
**Ewelme Road, SE23**

Total\* = 104.5 sq. m / 1124.7 sq. ft

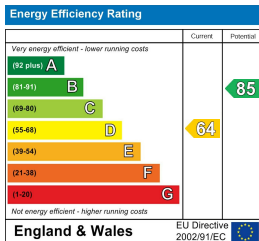
First Floor = 52.7 sq. m / 567.2 sq. ft

Ground Floor = 51.8 sq. m / 557.5 sq. ft

 = Reduced head room below 1.5m



\*All measurements are approximate and do not include eaves space. The plans are for representation purposes only as defined by RICS - 'Code of Measurement Practice'. The plans are not to scale. Please personally check all sizes, dimensions, shapes and compass bearings before making any decisions reliant upon them. Copyright The Pedder Group © 2026.



Pedder Property Ltd trading as Pedder for themselves and for the vendor/landlord of this property whose agents they are, give notice that (1) these particulars do not constitute any part of an offer or contract, (2) all statements contained within these particulars are made without responsibility on the part of Pedder or the vendor/landlord, (3) whilst made in good faith, none of the statements contained within these particulars are to be relied upon as a statement of representation or fact, (4) any intending purchaser/tenant must satisfy him/herself by inspection or otherwise as to the correctness of each of the statements contained within these particulars, (5) the vendor/landlord does not make or give either Pedder or any person in their employment any authority to make or give representation or warranty whatsoever in relation to this property.